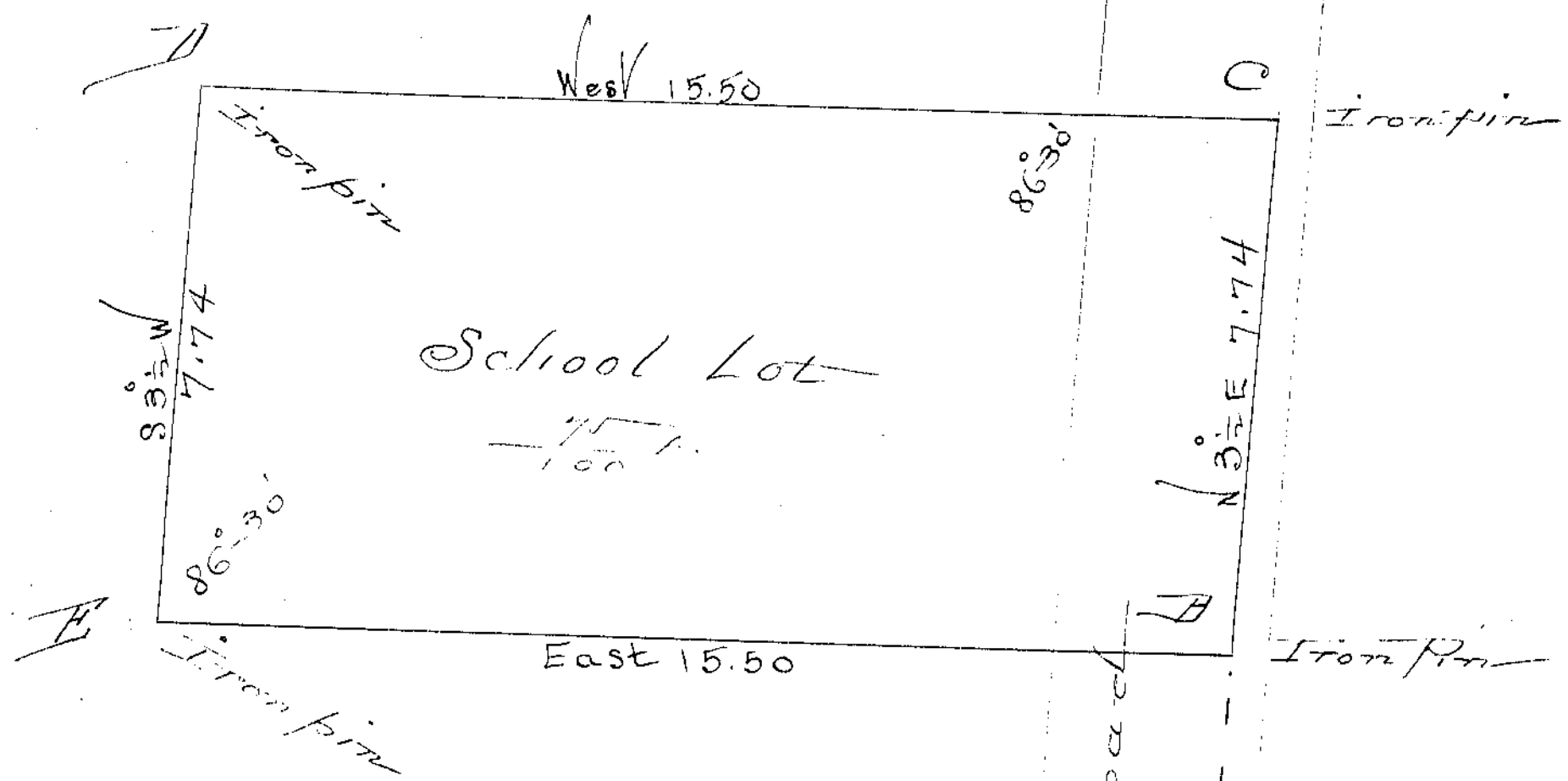


Scale 200 = 1 IN

ADAMS TWP
H. GATES No 1554



Chas. Hall and
Letitia Wheeler

Wm. Nabb

Surveyed Aug 1st 1902 at the
 instance of the Board of Educa-
 tion of Adams Tp. Samuel Hoffmann
 Pres. Samuel Green Clerk
 Iron pins were driven to mark
 the corners A C D & E. The angles
 DCB and DEB = 86°-30'. Persons
 present at the marking of the corners
 John Jackson Letitia Wheeler A-
 long Wheeler and Chas. Bell

Byron Franklin
 County Surveyor

Stake