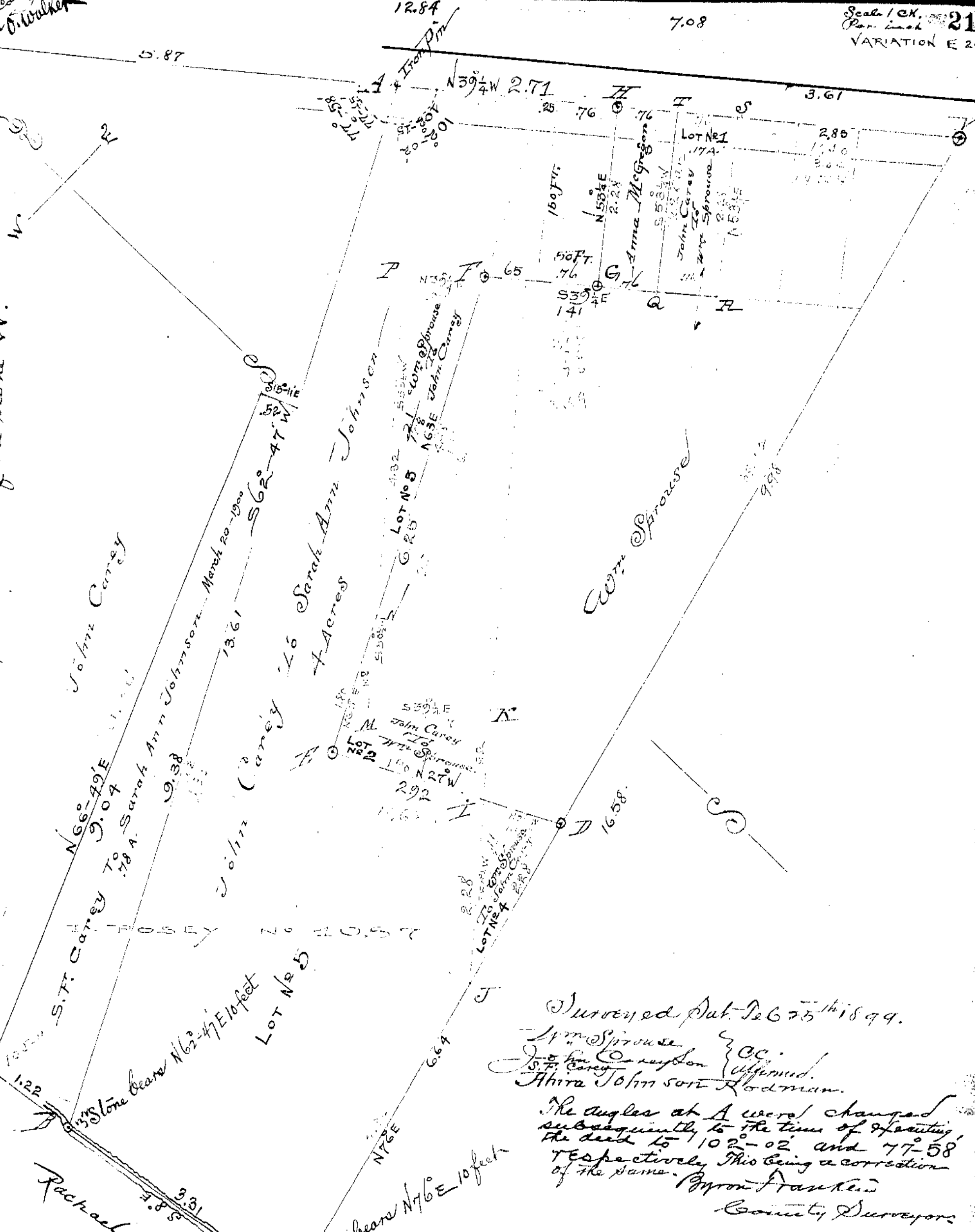


W = Stone
 Corner
 John Carey
 and
 O. Walker

W = Stone Corner John Carey & O. Walker Stone being on S.W. side of Pike and near the S.W. Corner of Bridge at intersection of Square dressed Stone marking Corner of the Corporation line of Wilmington set against the S.W. side of the Stone "W".



Surveyed Oct. 26th 1899.
 Wm Sprouse & Co.
 S.F. Carey
 Anna Johnson Rodman.
 The angles at A were changed subsequently to the time of setting the deed to 102°-02' and 77°-58' respectively. This being a correction of the same.
 Byron Franklin
 County Surveyor