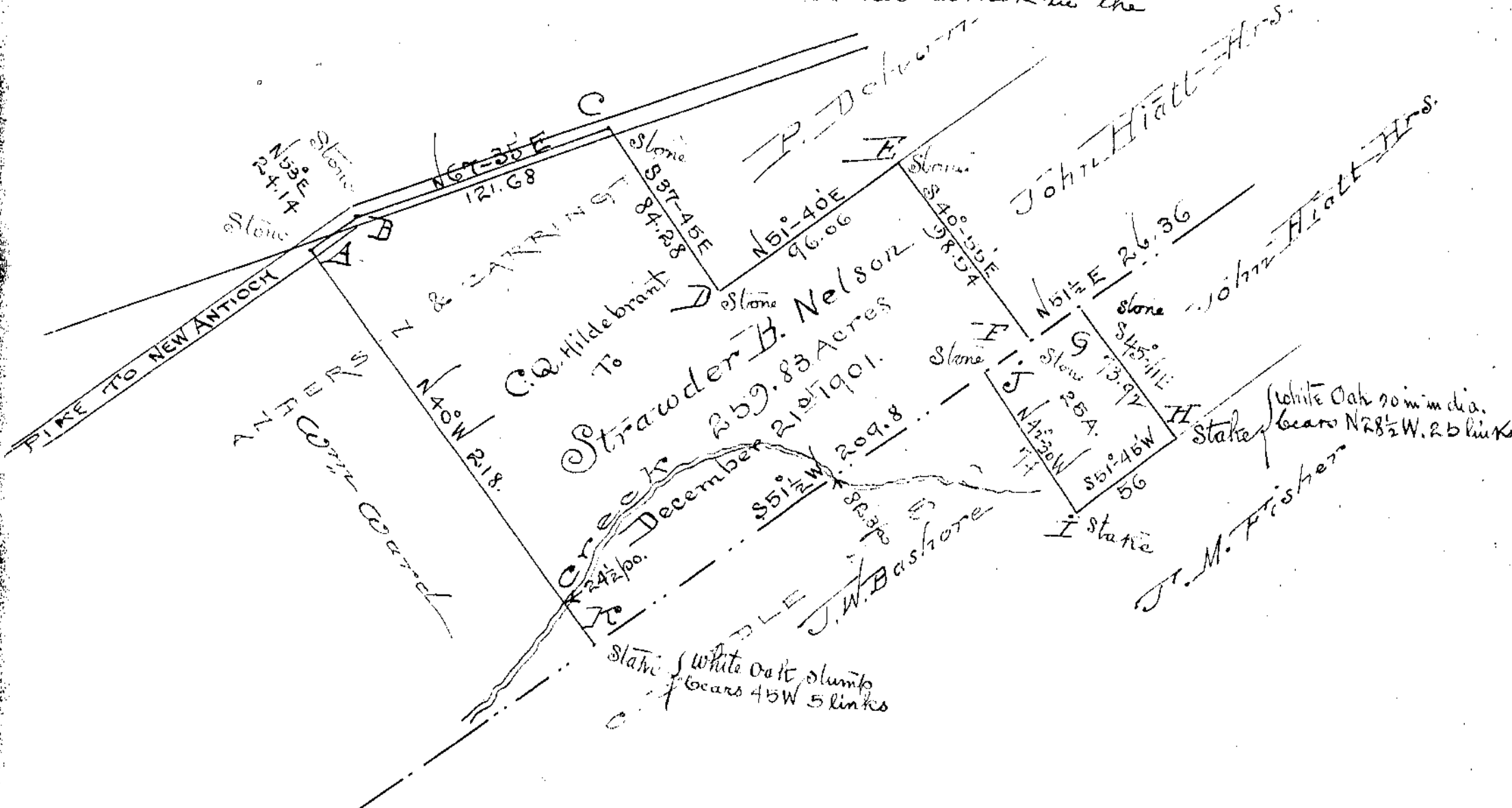


Beginning at a stone A in the Center of the pike leading to New Antioch corner to Com^{rs} Ward thence with the center thereof N 53° E 24.14 poles to a stone in the center thereof thence again with the center thereof N 67° 35' E 121.68 poles to a stone in the center thereof (marked "C" on the plat) corner to J. Dehan thence with his line S 40° 55' E 98.04 poles thence again with his line N 51° 40' E 96.06 poles to a stone D his corner to John Hiatt thence with his line S 40° 55' E 98.04 poles to a stone E corner to said line thence with said line N 51° 30' E 26.36 poles to a stone in said line (marked G) corner to said Hiatt thence with his line S 40° 41' E 73.92 poles to a stone H his corner in the line of J. M. Fisher thence with his line S 51° 45' W 56 poles to a stake I his corner in the



line of J. W. Bashore thence with his line N 42° 30' W 74 poles to a stone in the aforesaid Original Survey line (J) thence with said line S 51° 30' W 299.8 poles to a stake K in said line corner to the aforesaid land thence with his line N 40° W 218 poles to the Beginning containing 259 83/100 acres of land 234 2/3 acres in Anderson & Carrington No 550

Recorded indexed this day
 of January A D 1902
 Byron Franklin
 County Surveyor