

Fig 2.

RICHLAND T.P.
N. BURWELL No 758.

UNION T.P.
Fig 1 T. POSEY No 1057.
WILMINGTON

Fig 1.

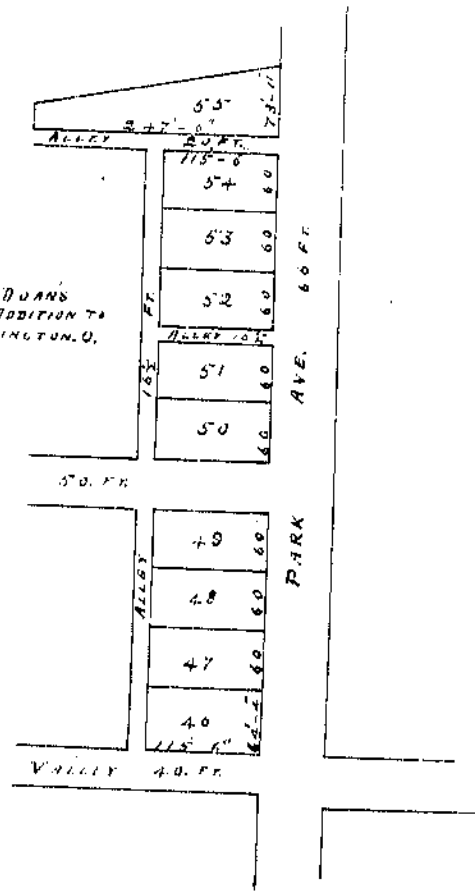


Fig 2.

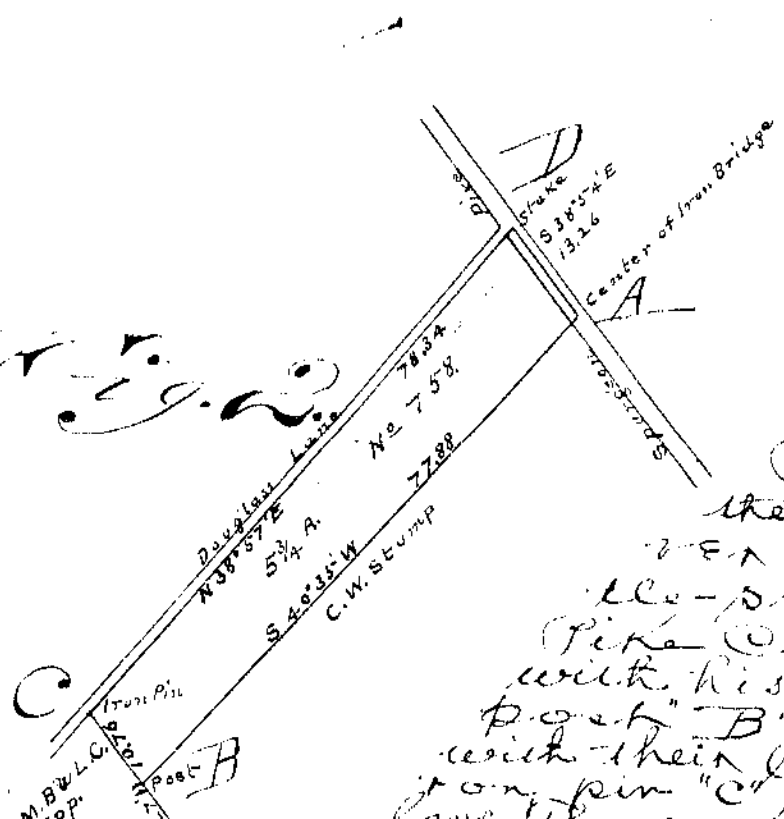


Figure Two. Beginning at a point "A" in the center of the iron bridge over the Wilsons Branch of Rats Creek on the corner of C.W. Stump thence with his line N 40° 35' W 77.88 poles to a post "B" in the line of M. B. K. K. K. thence with their line N 38° 54' W 10.76 poles to an iron pin "C" in the S.E. corner of...

Recorded & Indexed