

Figure One

Beginning at a stone "A"
Corner to W.K. Woringer
Thence with his line S 40° E
103.2 poles to a stone "B"
in his line corner to
Burris. Thence with his
line S 43° E 74.91 poles to
a stone "C" in his line
corner to Geo. Lamb. Thence
with his line N 38° E
103 poles to a stone "D"
in his line corner to the
aforesaid Woringer -
Thence with his line
N 43-40° E 71.30 poles to
the beginning.

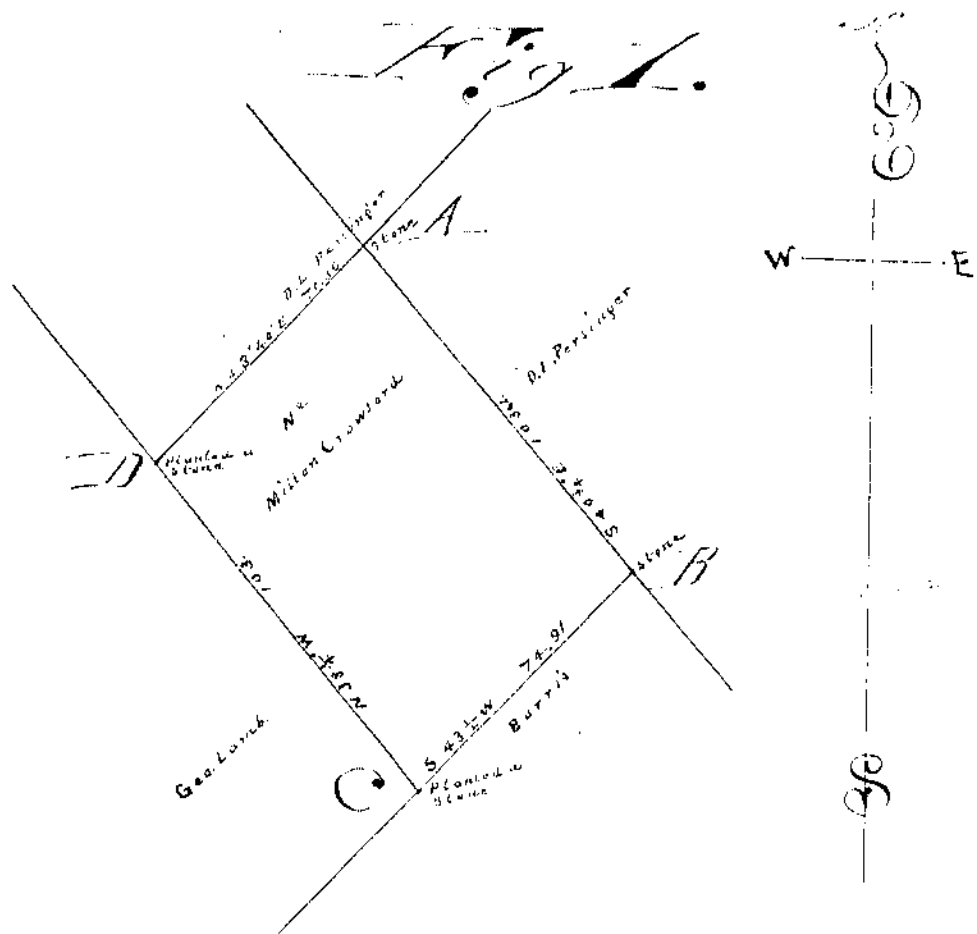


Figure Two

Beginning at a stone
A in the center of the Bapt-
tist Church Pine Thence
with the center thereof N 84° 3/4 E
90.71 poles to an iron pin
B in the center thereof at
the north terminus of a
Bowman's lane Thence
with the east margin there
of S 5° W 86.52 poles to a stone
C in said Bowman's north
line. Thence with said
line S 8° E 17.92 poles to a
stone "D" - his corner to
Williams west line Thence
with said line N 4° 06' E 42.34
poles to a stone "E" corner
to said Williams Thence with
his line S 84-45° E 72.96 poles
to a stone "F" another of his
corners. Thence with his
line N 5° E 44 poles to the
beginning containing twenty
nine and sixty eight one hun-
dredths acres of land.

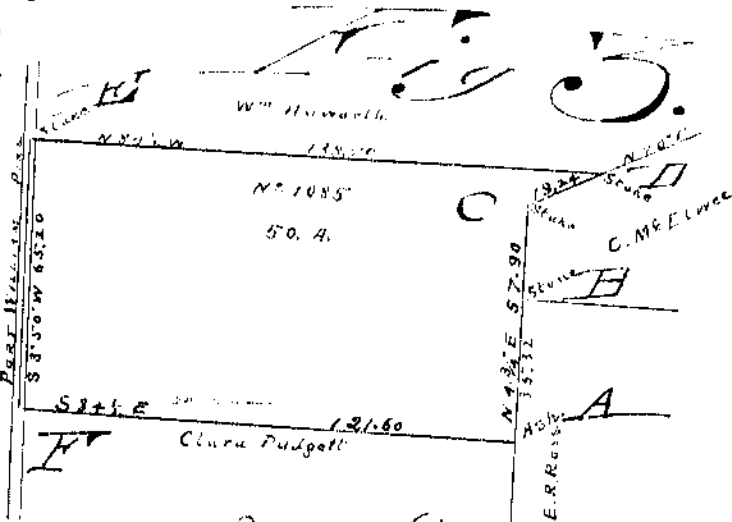
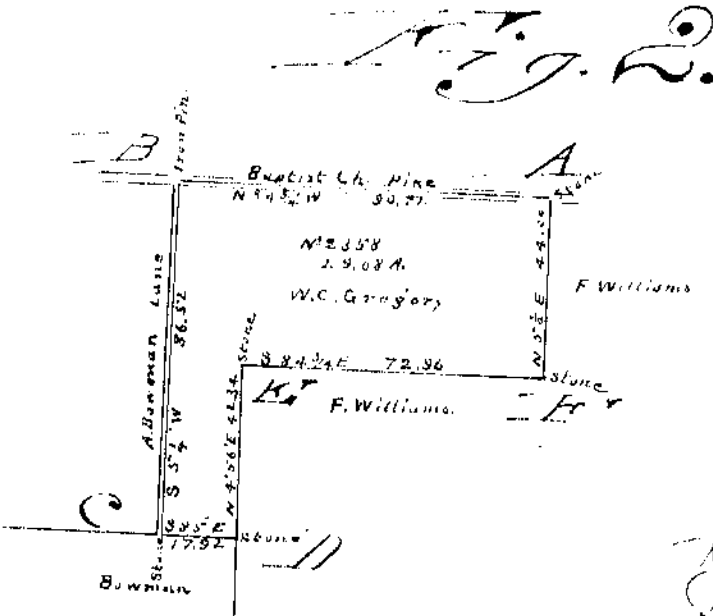


Figure Three
Beginning at a oak
tree "A" corner of Clara
Padgett in the east line
of S.R. Ross Thence with
said line N 4° 3/4 E pass-
ing a stone "B" corner to
said Ross and C. Mc-
Elwaine at 35.32 poles
57.40 poles to a stone
C another corner to said
McElwaine Thence again
with his line N 70° E
14.24 poles to a stone D
in his line corner to Wm
Haworth Thence with
his line N 84° W 138.50
poles to a stone in the
center of the Portwillian
and Wilmington Pike -
Thence with the center thereof
of S 3° 50' W 65.20 poles to
the point "E" corner of the
aforesaid Clara Padgett
Thence with her line S 84° E
121.60 poles containing fifty
by acres of land

Recorded & indexed this 26th day of
December AD 1901

Dyron Franklin
County Surveyor