

AND
A. JOHNSON No 2536.

Figure One
Beginning at a stone "A" in the
E. line of the driveway corner of
S. To Lane thence with said line
N 41° 00' 33.50 poles to a
stone "B" in said line east
to the C. Brandonburg line
thence with their line N 34° 50'
50 poles to a stone "C" their
corner thence with their
line N 41° 17' E 32.80 poles
to a stone "D" in the cen-
ter of the Orange Road
thence with the center
thereof S 31° 50' E 67
poles to the beginning
containing thirteen
acres of land.

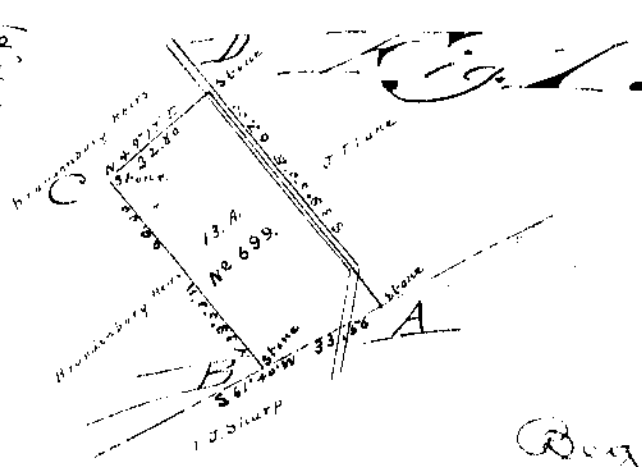
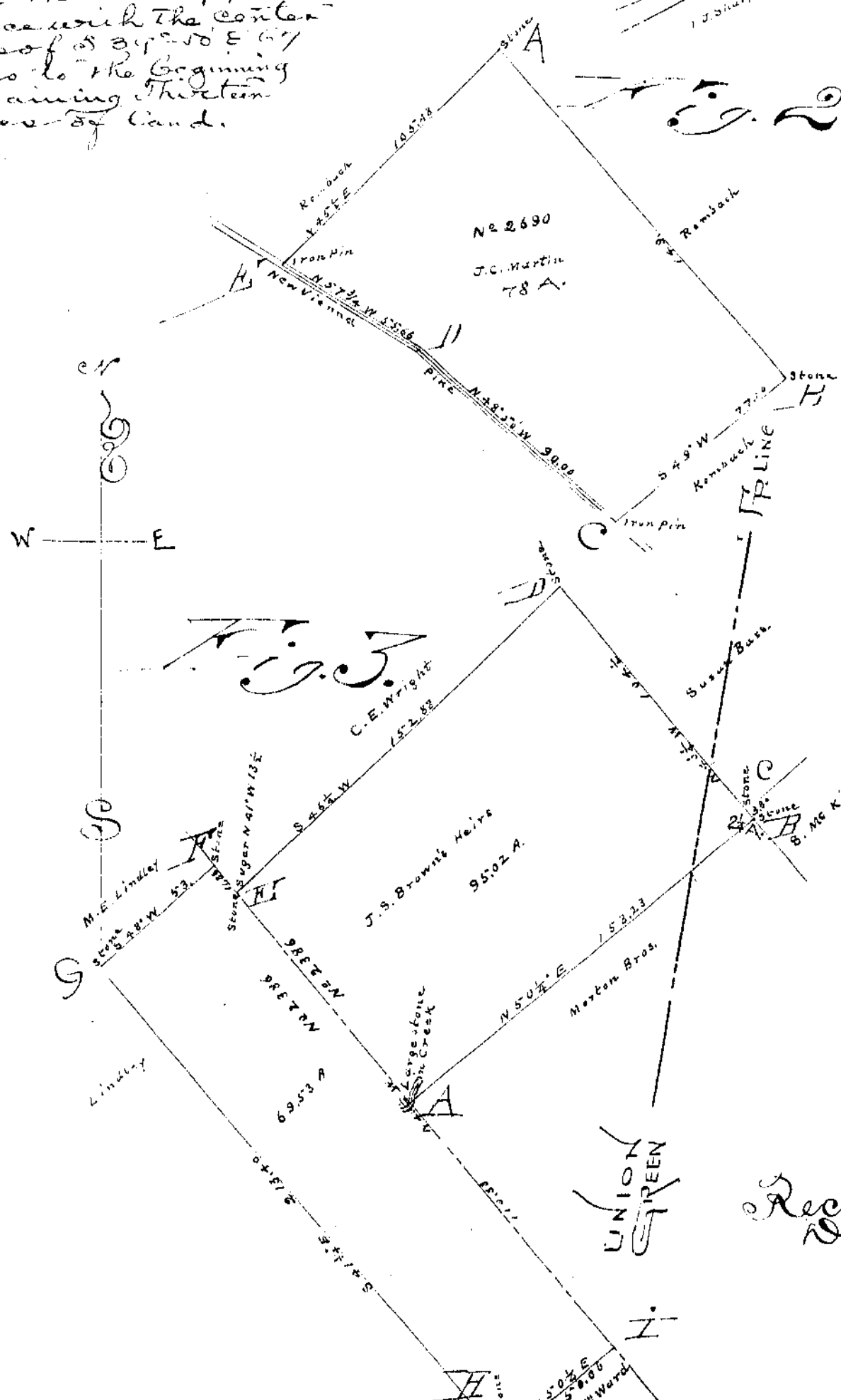


Figure Two

Beginning at a stone "H"
corner of Mr. Rombach
thence with his line S
49° 10' 17.10 poles to an iron
pin "C" in the center of the
Mington and New Venns Pike
corner to said Rombach
thence with the center of
said line N 48° 50' 50
poles N 59° 40' 00' S.E.C. poles
to an iron pin "H" in the
center thereof another cor-
ner to said Rombach thence
with his line N 45° 2' E 105.48
poles to a stone "A" another of
his corners thence with his
line 149 poles to the begin-
ning containing seventy
eight acres of land.

Figure Three

Beginning at a large stone "A"
in the road and creek in the orig-
inal driveway line between the
Mason and Crown Driveways Nos
2386 corner of Morlon Bros.
thence with their line N 50° 15'
15.23 poles to a stone "B" their
corner in the line of M. McKenzie
thence with her line and line
of Mason Wass and passing
their common corner marked by
a stone "C" N 50° 15' poles N 40° 4'
104.5 poles to a stone "D" corner
of M. McKenzie thence with his
line S 46° 4' W 152.88 poles to a stone
"E" his corner in the aforesaid
original line where a square
corner N 40° 13' 1/2 lines thence with
said line N 40° 1/2 W 11.86 poles to a
stone "F" the said line corner to
M. E. Lindsey thence with his line
S 48° W 78 poles to a stone "G" his
corner thence with his line
S 41° 3/4' E 213.40 poles to a
stone "H" thence N 50° 1/2 E 100.06
poles to the stone line the a-
foresaid original line thence
with said line N 40° 1/2 W 100.87
poles to the beginning containing
one hundred and four
and five one hundred and
five acres of land.



Recorded and indexed this 25th day of
December A.D. 1901

Byron Franklin
County Surveyor