

Figure One

Lot 1

Beginning at a stone "A" in the center of the center Pike at the north terminus of the Mitchell Pike. Thence with the said center Pike $S 57 \frac{3}{4} E$ 2.72 poles to a stone in the center thereof marked "H". Thence again with the center thereof $S 81 \frac{1}{2} E$ 15.24 poles to a stone "C". Thence $S 90 E$ 15.72 poles to a stone "E". Thence $N 86 \frac{3}{4} W$ 12.36 poles to a stone "H" in the center of the of said Mitchell Pike. Thence with the center thereof $N 10 \frac{1}{2} E$ 16.86 poles to the beginning containing one and forty six one hundredths acres of land.

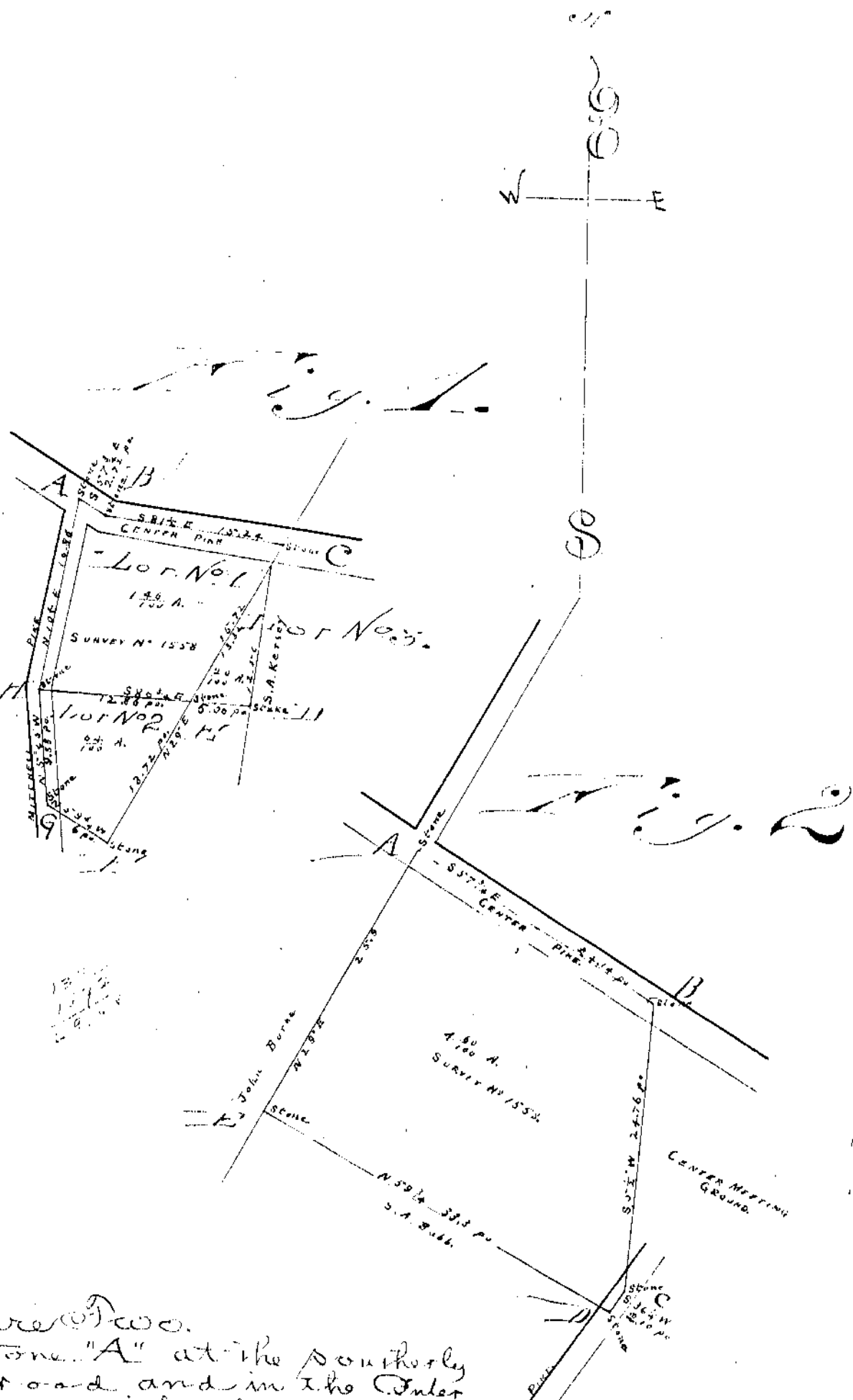
Figure One

Lot 2

Beginning at a stone "C" in the center of the Mitchell Pike. Thence with the center thereof $N 54 \frac{1}{2} W$ 4.88 poles to a stone "H". Thence $S 81 \frac{3}{4} E$ 12.86 poles to a stone "E". Thence $S 29 \frac{1}{2} W$ 13.72 poles to a stone "H". Thence $N 59 \frac{3}{4} W$ 6 poles to the beginning containing sixly four one hundredths of an acre of land.

Figure Two

Beginning at a stone "A" at the southerly terminus of a County road and in the center of the center Pike. Thence with the center thereof $S 57 \frac{3}{4} E$ 24.14 poles to a stone "H" in the center there corner to the center meeting. Thence $S 5 \frac{1}{2} W$ 24.76 poles to a stone "C" in the center of Mitchell Pike. Thence with the center thereof $S 36 \frac{1}{4} W$ 2.10 poles to a stone "D" corner to a road. Thence with his line, $N 59 \frac{3}{4} E$ 33.3 poles to a stone "E" in John Burns's line. Thence with his line $N 79 E$ 2.57 poles to the beginning containing one and sixty one hundredths acres.



Recorded & indexed this
24th day of December AD 1901
Byron Franklin
County Surveyor