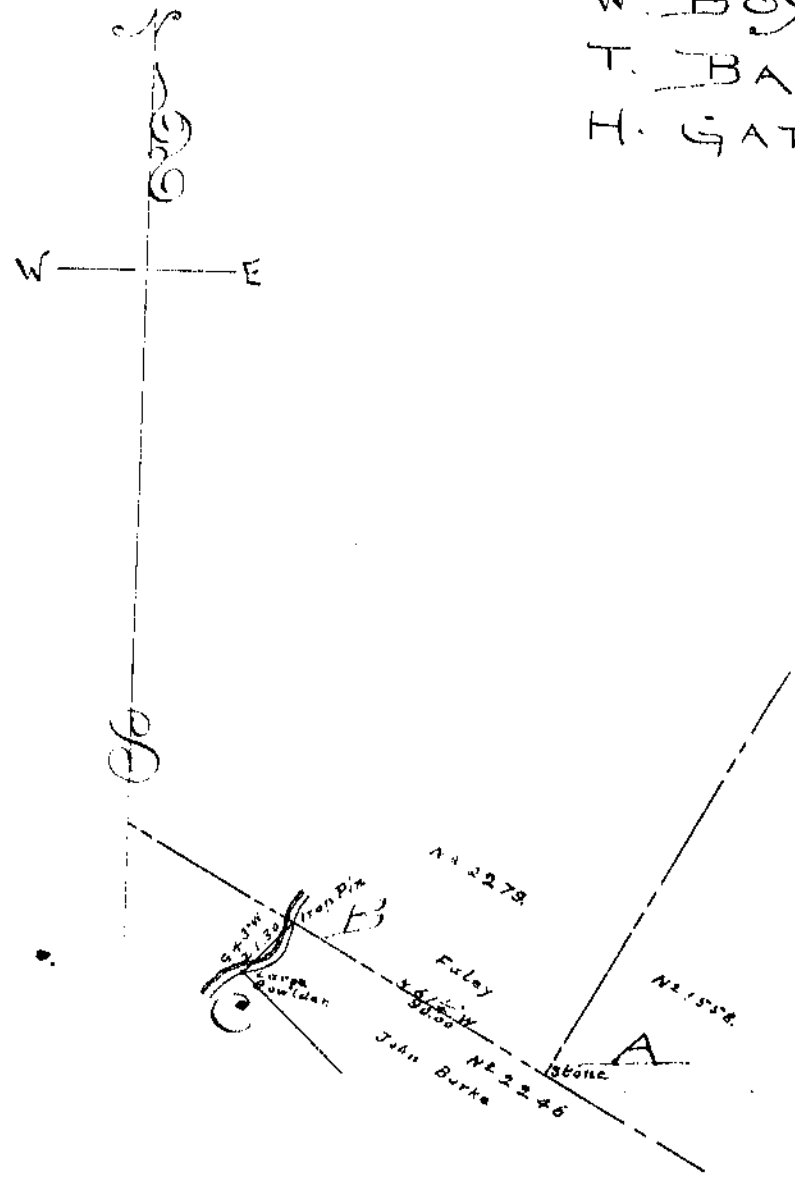


W. BOYCE No 2246

T. BANKS No 2279

H. GATES No 1558



Beginning at a Stone "A" mentioned  
 therein, corner to of Banks Survey  
 No. 2279 and most westerly  
 corner to of Gates Sur-  
 vey No. 1558 in the N.E. line of  
 W. Boyce Survey No. 2246  
 thence with said line N 61 1/4 W 90  
 poles to an iron pin "H" in said  
 line on the S.E. side of Dutch  
 Creek thence down said creek  
 crossing the same twice 450  
 1/2 poles to a large boulder  
 "C" on the S.E. side of said creek  
 most westerly corner of  
 John Burke

Recorded & indexed this 20th day of  
 December A.D. 1901

Rayton Franklin

County Clerk