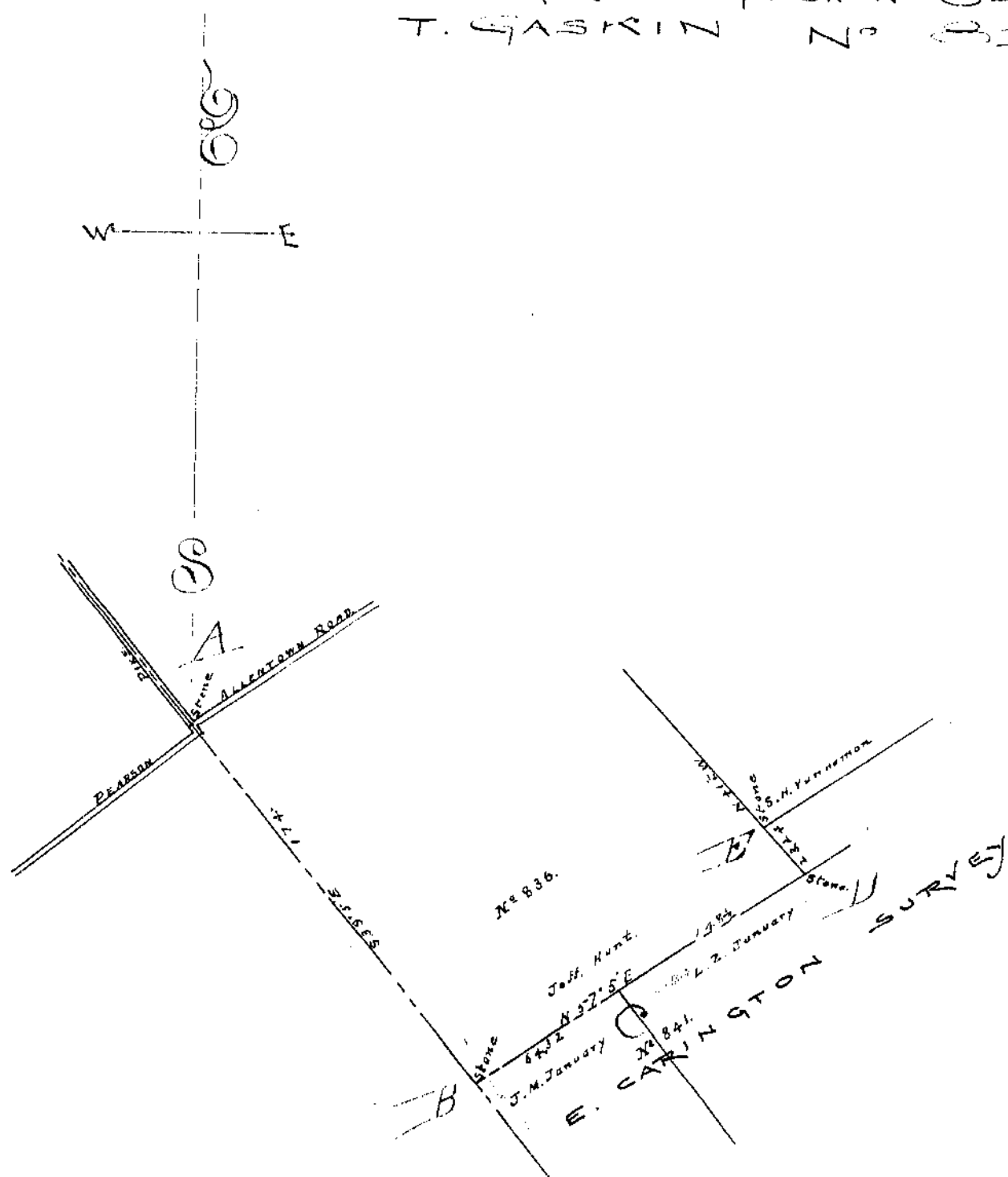


No 836.
E. CARINGTON No 841.
T. GASKIN No 813.



Beginning at a stone "A" in the S.W. line of the Original survey, in the center of the Pearson Pit at its intersection with the Allentown Road thence with said original line $S 147^{\circ} 5' E$ 147 poles to a stone "B" most northerly corner to T. Gaskin Survey No 813 and most southerly corner to survey No 836. Thence with the S.E. line thereof $N 57^{\circ} 5' E$ passing the north corner to J.M. January at 64.52 poles 148 1/2 poles to a stone "D" thence $N. 41 \frac{1}{2}^{\circ} W$. 23.24 poles to a stone "E" South corner to D.H. Vanmanan.

Recorded and indexed this 19th day of December A.D. 1901

Byron Franklin
County Surveyor