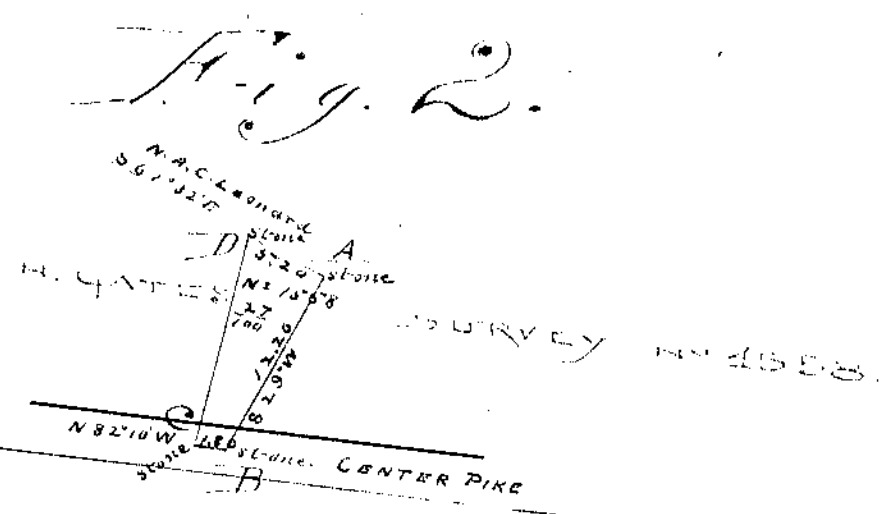
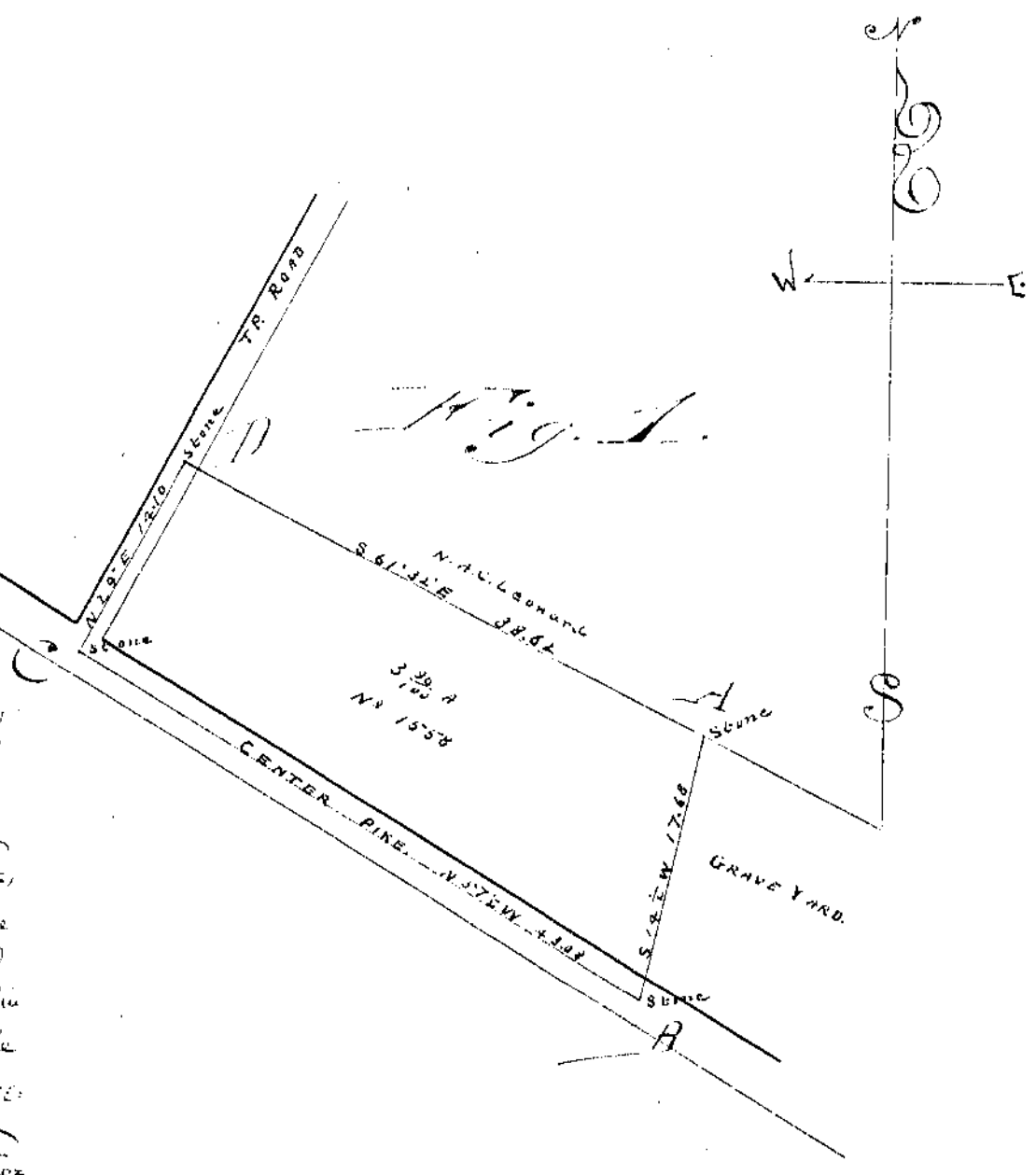


Surveyed June 12th 1901

Figure Two. Beginning at a stone "A" in the S.W. corner of the Leonard N.W. corner to the grove yard thence with the line of said grove yard S 14 1/2° W 17.68 poles to a stone "H" in the center of the Center Pike thence with the center thereof N 57 1/2° W 43.08 poles to a stone "C" in the center thereof at the southerly terminus of a Township road thence with the center thereof N 29° E 14.10 poles to a stone "D" corner to the aforesaid Leonard thence with her line S. 61-32 E 38.62 poles to the beginning containing three and ninety six one hundredths acres of land.



Beginning at a stone "A" corner to N.W. Leonard thence with her line S 29° W. 12.20 poles to a stone "H" in the center of the Center Pike thence N 57-10 W. 1.80 poles to a stone "C" the S. E. corner of the Grove yard thence with the east line thereof _____ poles to a stone "D" N. E corner of said Grove yard in said Leonard's line thence with her line S 61-32 E 38.62 poles to the beginning containing twenty seven one hundredths of an acre of land.
Recorded and indexed this 16th day of December A.D. 1901

H. Gates