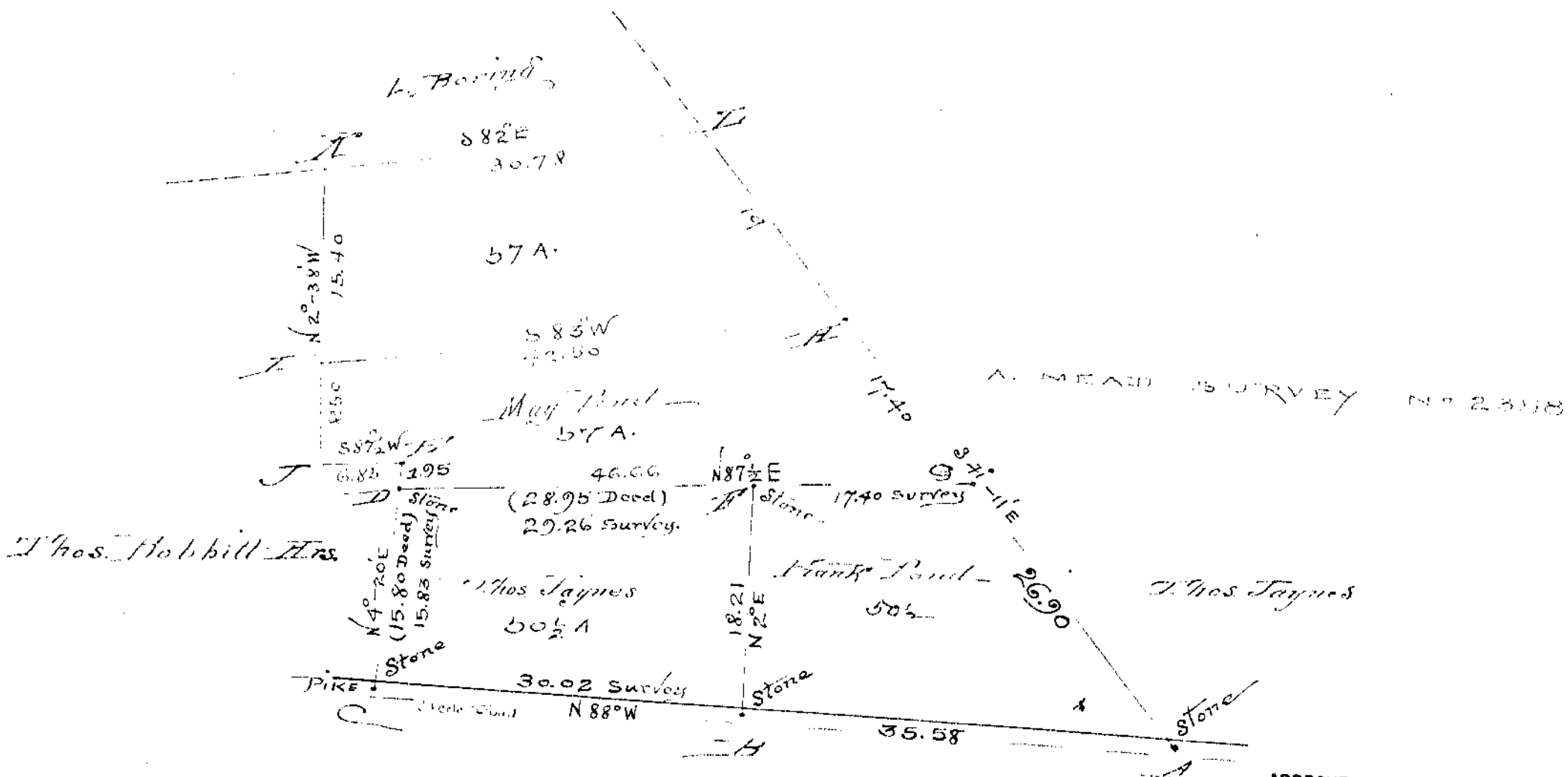


Stone monuments were found at
 A & C and an Elm stump
 of the corner tree recently cut
 off.



APPROVED FOR
 MATHEMATICAL ACCURACY
 Clinton County Engineer
 Per M. Waller 50.60
 MAR 20 1890

Survey made Nov 22nd 1898.
 Asa Wood Chain Carrier affirmed.
 George Patch
 Witnesses to the planting of the corner at D & F: Wesley Higgins,
 John D. Pond, Frank Pond, Asa Wood, Thos. B. Jaynes,
 and George Patch.
 The lines with course and distance marked in red were
 not measured

Reyon Franklin
 Co. Surveyor