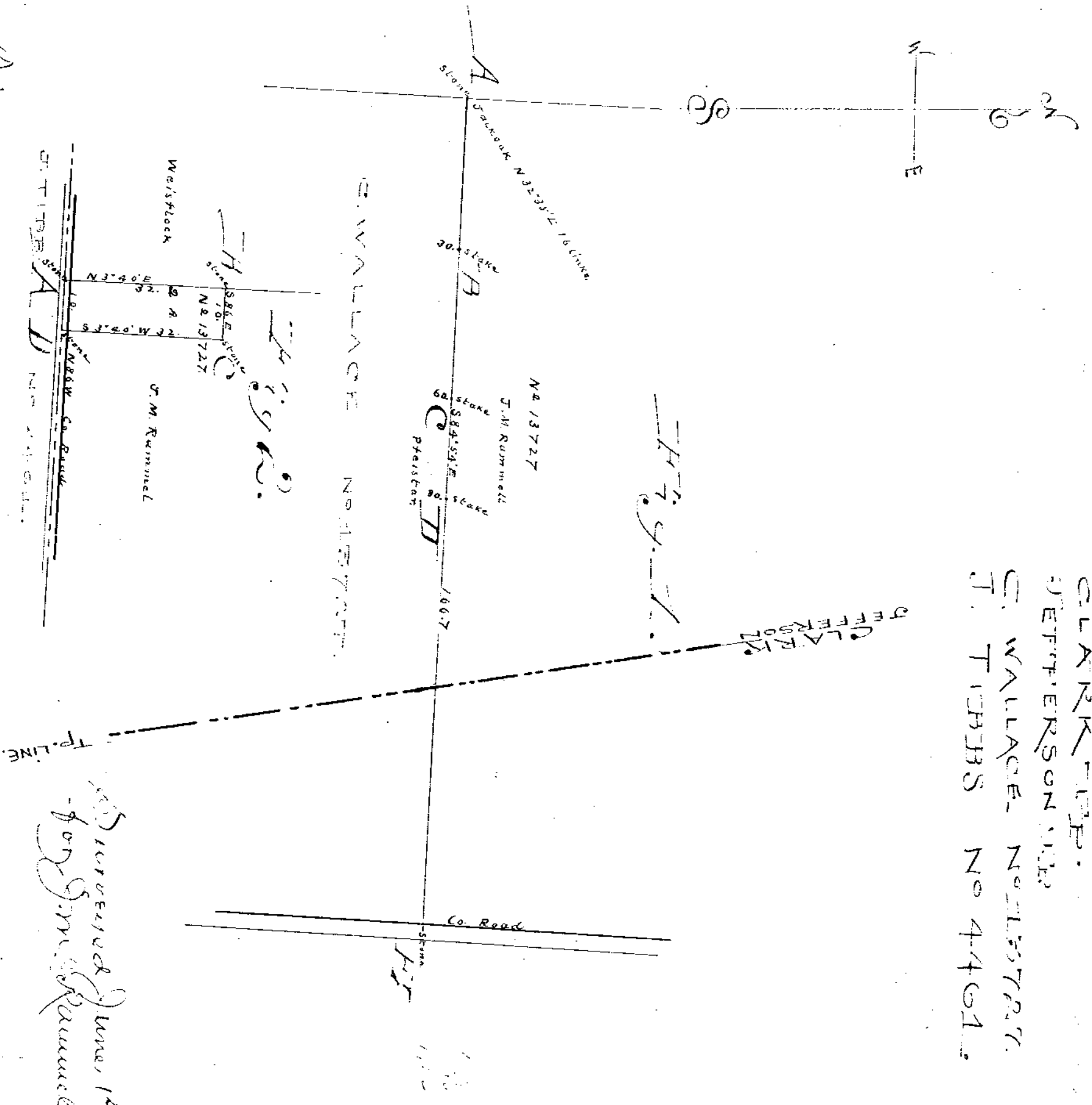


CLARK TWP.
JEFFERSON CO.
E. WALLACE No 445727.
J. THIBBS No 4461.



Surveyed June 1st 1901
by J.M. Rummel

of figure One Beginning at a Stone "A" as here
 a Stake on the corner north N 82° 33' 58" 16 Links on
 to John Pfeister's corner with this line 84.548
 bearing 3 stakes "H" "C" by "D" at 30 poles 60
 poles and 80 poles 166.7 poles to "H" N 10° 15'
 in a course toward an other corner 15 said Pfeister's
 figure One Beginning at a Stone "A" in the north
 line of John Pfeister No 4461 in the center of a
 county road corner to John Weissflock's line
 with his line N 3° 40' E 32 poles to a Stone "B" in said
 line corner to J.M. Rummel's corner with his line 88.6
 10 poles to a Stone corner to a Stone in the a
 19 in with his line S 2° 40' 32 poles to a Stone in the a
 corner with the center line and in the center of said road
 corner with the center line of N 8° 10' 10 poles to beginning
 containing two acres of this land
 Reported and made a this 13th day of December
 A.D. 1901

Byron Frank
County Surveyor