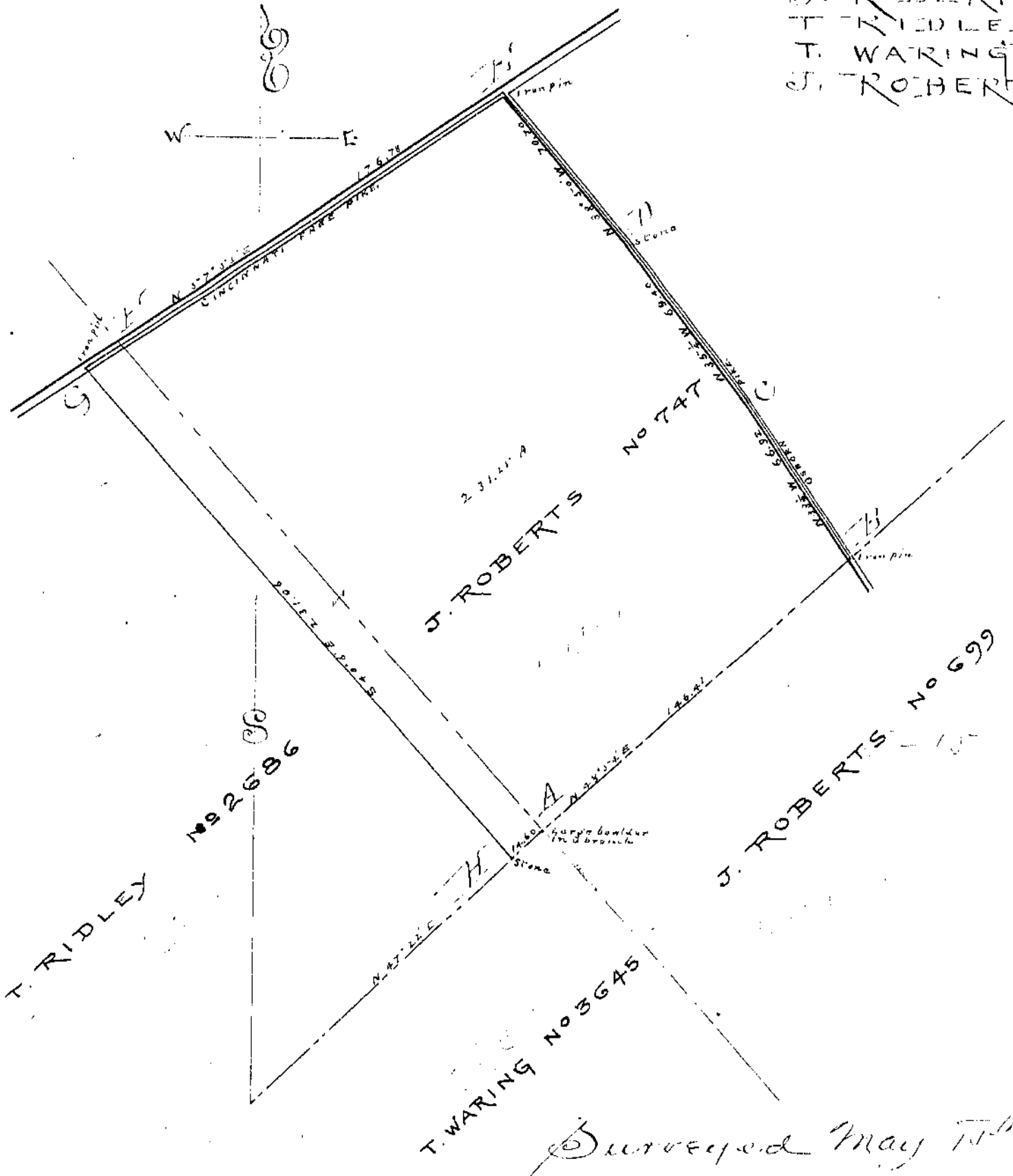


J. ROBERTS	No 747
T. RIDLEY	No 2686
T. WARING	No 3645
J. ROBERTS	No 699



Surveyed May 15<sup>th</sup> 1901

Beginning at a large boulder "A" in a branch corner of the four surveys J. Roberts No 699 and T. Waring No 3645 and T. Ridley No 2686. Thence with the original survey line between said surveys Nos 747 and 699 - N 48° 54' E 146.41 poles to an iron pin "B" in the center of the Osborn pine. Thence with said pine N 33° 10' W 66.95 poles to a stone in said pine marked "C". Thence again with said pine N 38° 50' W 64.40 poles to a stone "D" in said pine. Thence again with said pine N 38° 50' W 45.70 poles to an iron pin "E" at the northerly terminus of said pine in the center of the Old Cincinnati State road pine. Thence with the center thereof S 57° 00' W 176.78 poles to an iron pin "G". Thence S 40° 00' E 231.06 poles to a stone "H" in the original survey line between surveys Nos 2686 and 3645. Thence with said line N 47° 22' E 146.60 poles to the beginning containing 231.25 acres.

Recorded and indexed this 12<sup>th</sup> day of  
 December A.D. 1901  
 Byron Franklin  
 County Surveyor