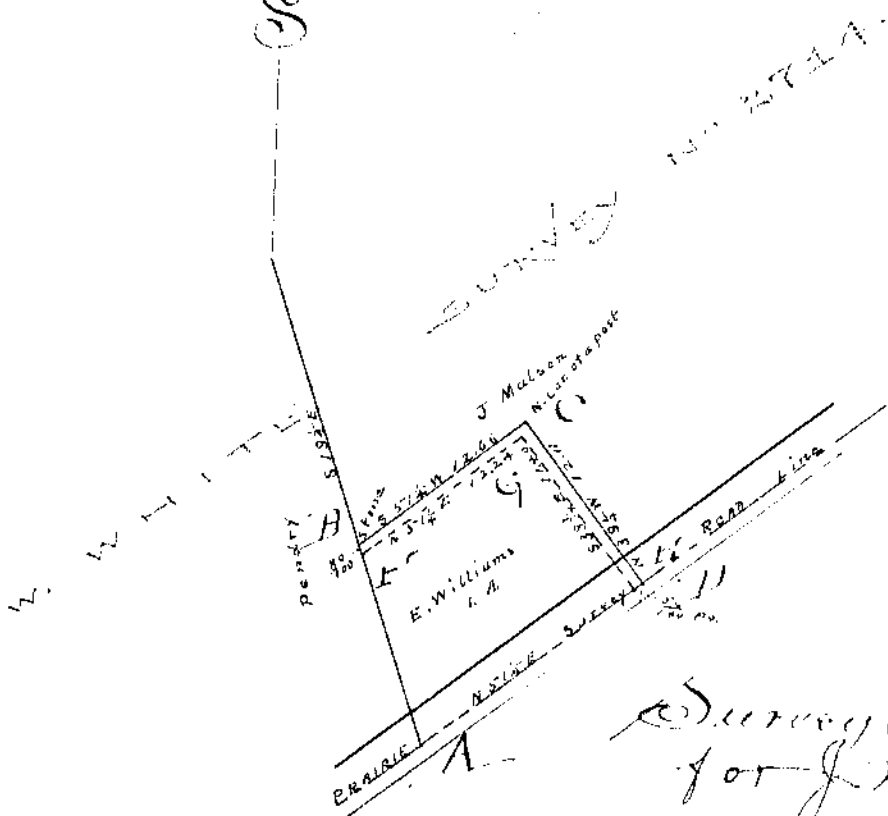


W ——— E



Surveyed May 10<sup>th</sup> 1901  
for J. Malson & E. Williams

Beginning at a stone "D" thence N 51<sup>o</sup> E 56/100  
of a pole to a point "E" corner to James Mat  
son thence with his line N 39<sup>o</sup> 1/2 W 12.11 poles  
to the N.W. corner of a post at "C" thence S 19<sup>o</sup> 1/4 W  
11.66 poles to a stone "H" in other Dendro's line  
thence with his line S 19<sup>o</sup> 1/4 E 80/100 of a pole  
to a stone "F" thence N 51<sup>o</sup> E 12.24 poles to a  
stone "G" thence S 38<sup>o</sup> 1/4 E 11.40 poles to the begin-  
ning containing nine one hundredths of  
an acre of land

Recorded and indexed this 11<sup>th</sup> day of  
December A.D. 1901

Byron Franklin  
County Surveyor