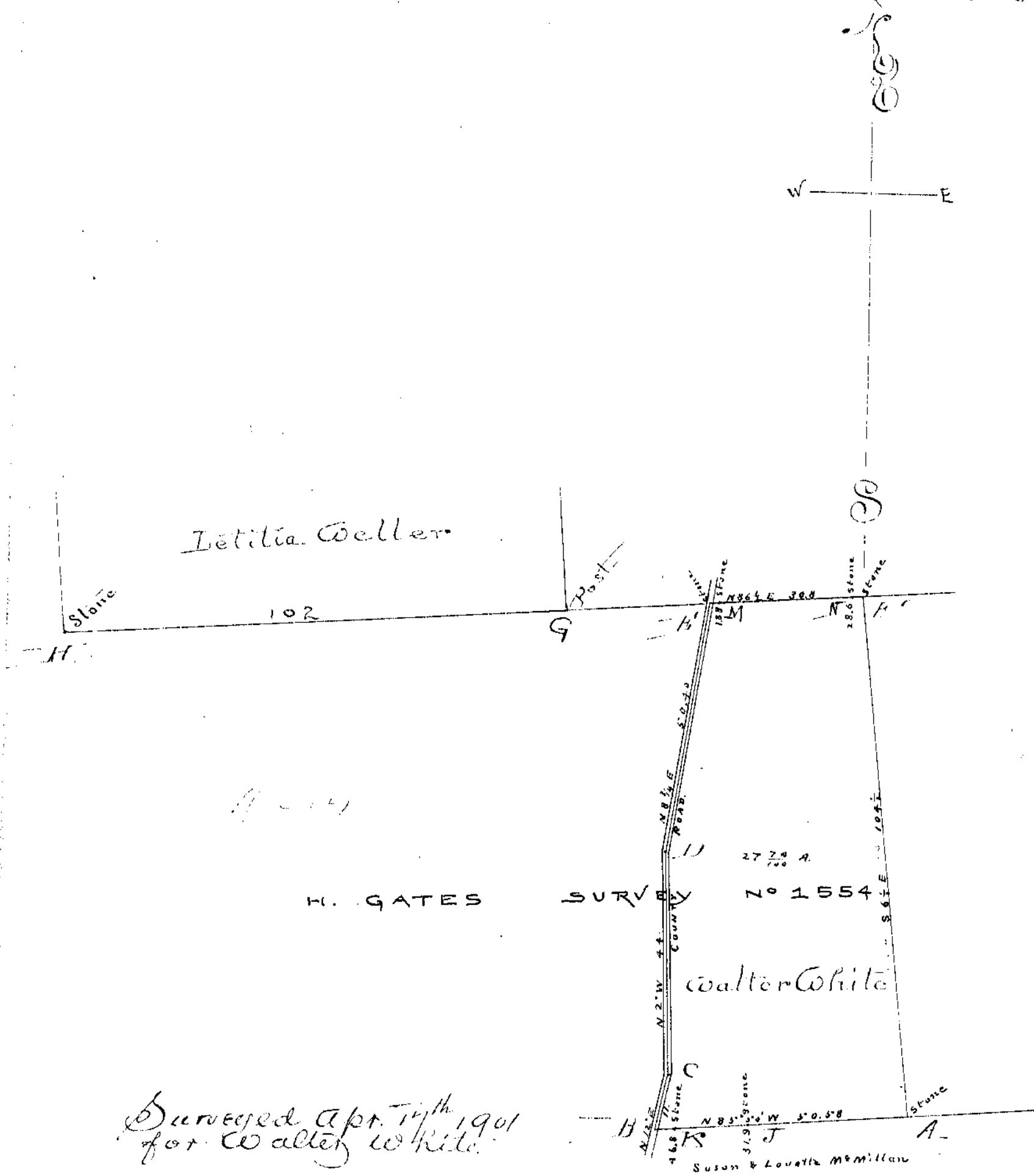


Walter White, Petitioner



Surveyed Apr. 14th 1901  
for Walter White

Beginning at a stone "A" in the north line of Susan & Lovetta McMillan thence with their line S 8 1/4 W 106.58 poles (to adding a stone "J" another at "K" in said at respectively 39.40 and 46.80 poles) to a stone in a county road marked "H" Thence with said road N 12 1/2 E 11 poles N 12 1/2 W 44 poles thence N 8 3/4 E 50.40 to a stone in ditch (marked "I") west side of road thence N 86 1/2 E passing a stone "M" at 1.88 poles another at 28.60 poles (marked "N") 30.8 poles to a stone "F" Thence S 6 1/2 E 104 1/2 poles to the beginning containing 27.14 acres.

Recorded and indexed this 9th day of  
December A.D. 1901  
Byron Franklin