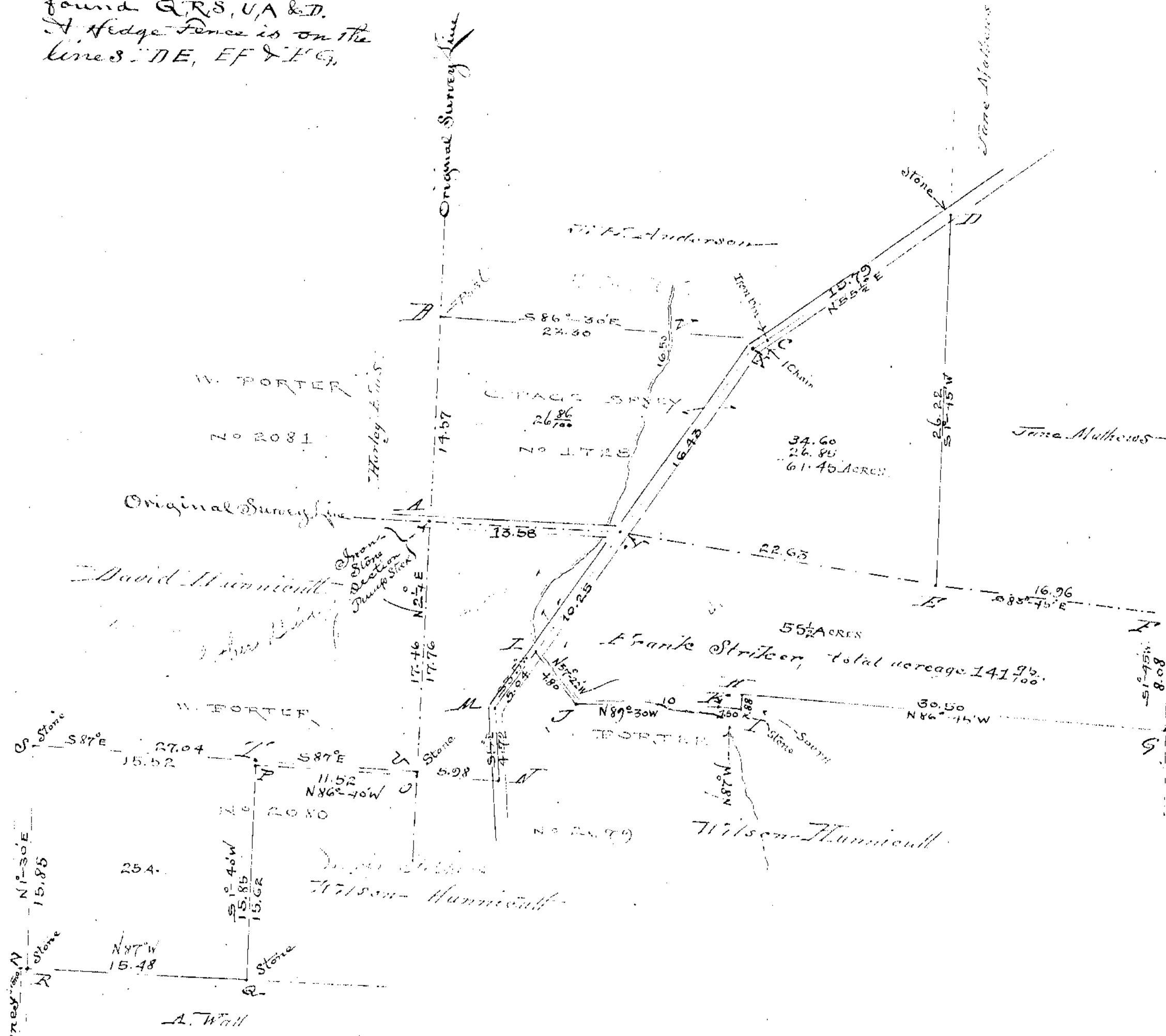


Stone Monuments were found Q, R, S, U, A & D.
 A Hedge Fence is on the lines B, DE, EF & FG.



Surveyed Oct 28th 1898, at the instance of Josephus Hopkins & Wilson Hummcutt Attys.
 Caru Speare } Chain Carriers Affirmed
 Francis Hopkins }
 Witnesses - David Hummcutt, Josephus Hopkins, Wilson Hummcutt
 The above is a true return.
 Byron Franklin
 County Surveyor.

W. H. H. H. H.