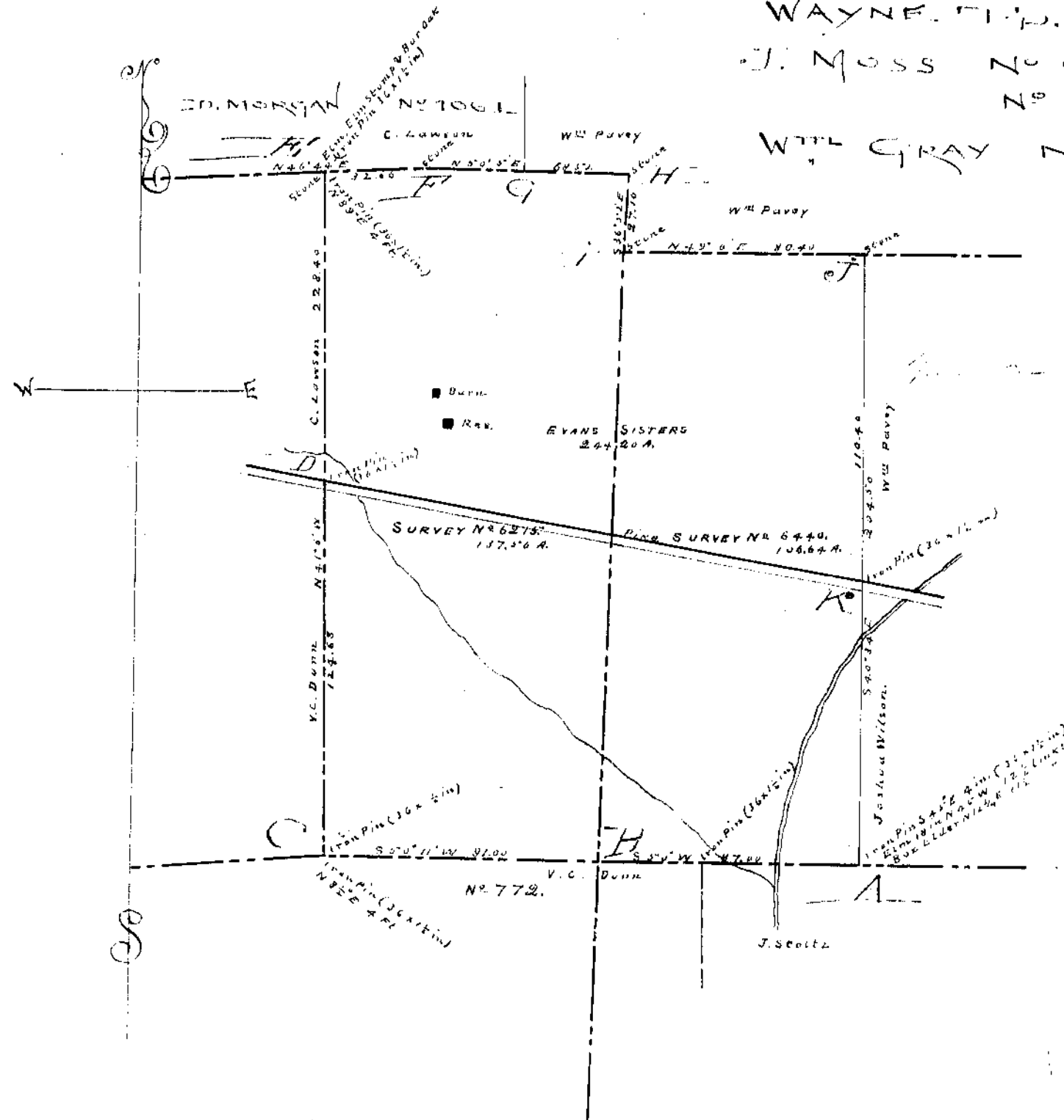


J. MOSS N° 6470.

N° 6215.

Wm. GRAY N° 772.



Surveyed May 3<sup>rd</sup> 1901  
for Evans Sisters

Chairman  
Richd. D. Harp  
Thos. H. Adams  
Ed. Clayton and Mrs. [unclear]

Beginning at an iron tube "A" in the original survey line between surveys numbers 772 and 6440. Thence with the said line N 50° 10' W 87 poles to an iron tube "H" in the original survey line between surveys numbers 6440 and 6215 thence with the south line of said survey number 6215 thence with the S.W. corner to said survey number 6215 thence with the S.W. line of said survey N 41° 50' W crossing the pine at 124.68 to 228.40 poles to an iron tube "B" west corner to said survey number 6215 in the S.E. line of Morgan survey number 1061 thence with said line N 46° 44' E 32.66 poles to a stone in said line thence again with said line N 50° 5' E 68.52 poles to a stone "H" north corner to said survey number 6215 thence with the line of said survey N 36° 52' E 27.10 poles to a stone west corner to the above said survey number 6440 thence with the new line of said survey N 49° 06' E 80.40 poles to a stone "J" in said line corner to Wm. Pavy thence with his line and line of Joshua Wilson and passing an iron pin in the center of the pine at 110.40 poles to the place of beginning.

Recorded and indexed this 5<sup>th</sup> day of December A.D. 1901.  
Byron Franklin County Surveyor.