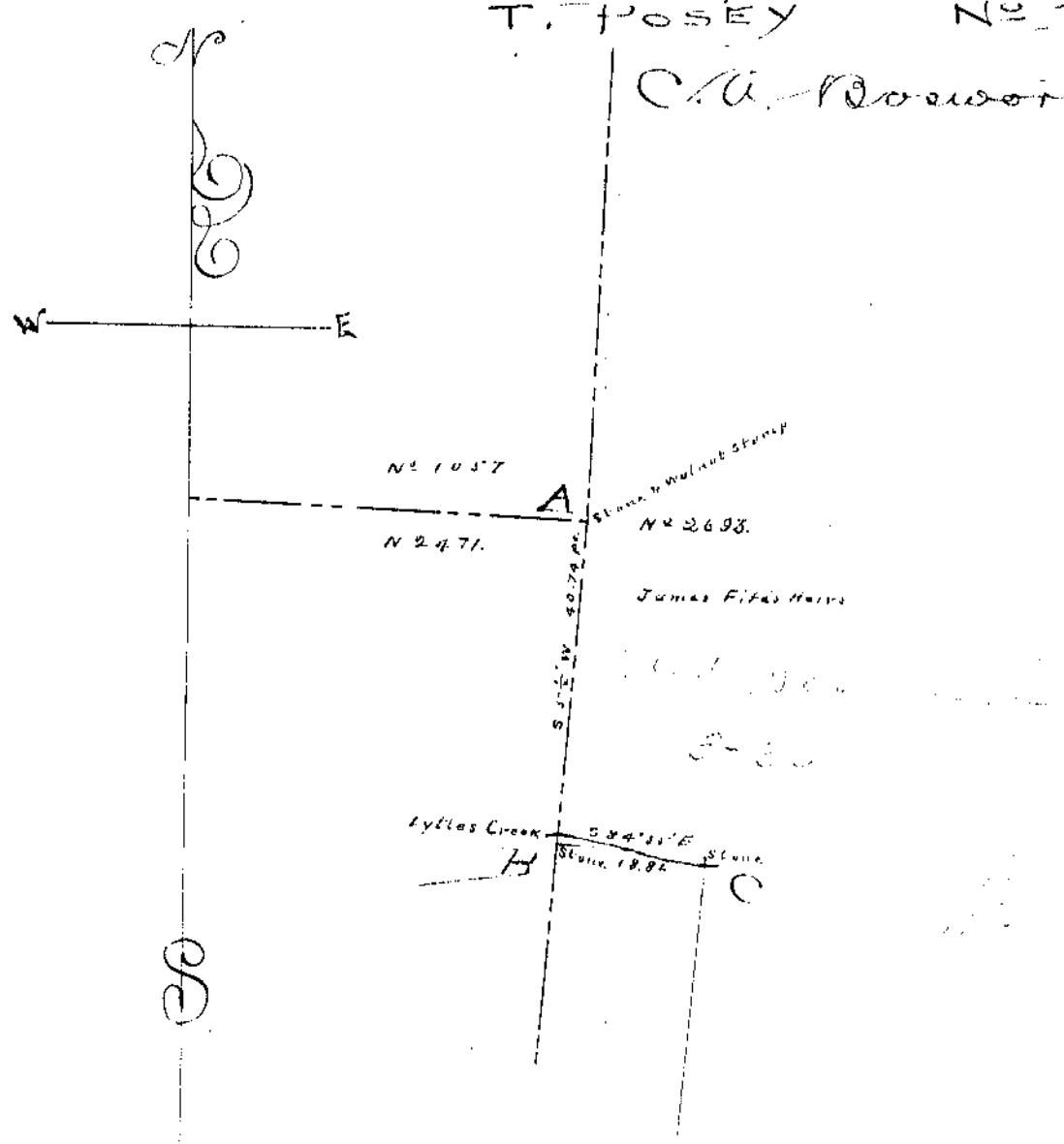


D. DUVALL No 2471.
E. STEPHENS No 2693.
T. POSEY No 1057.

C.A. Rowworth Petitioner



Surveyed Mch. 30th 1901
for C.A. Rowworth

Beginning at a stone the walnut corner of
 Thomas Posey's survey number 1057
 of D. Duval survey number 2471
 in the west line of E. Stephens sur-
 vey number 2693 thence with the
 original survey line between said
 D. Duval and E. Stephens surveys
 S 52° 14' W 40.74 poles to a stone "H" in
 said original line on the bank
 of Lytles Creek corner to match
 of J. Fife thence with his line up said
 Creek S 54° 31' E 18.82 poles to a stone
 "C" another corner to said J. Fife

Recorded and indexed this 5th day of
December A.D. 1901

Byron Franklin
County Surveyor