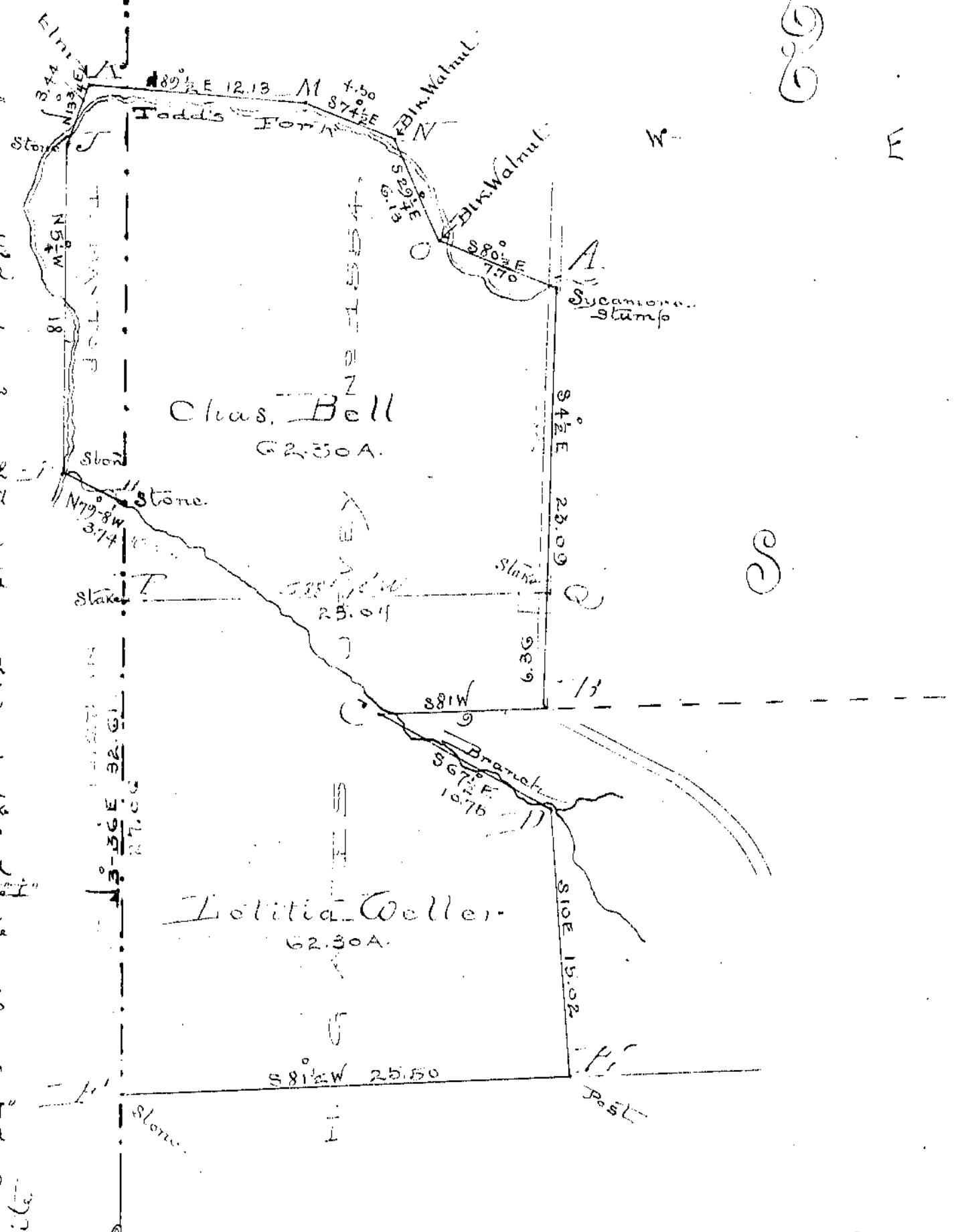


H. GATES No 1554.
T. BAYTOP No 2371.

Chas Bell Petitioner

Beginning at a Sycamore stump "A" on the South Bank of Todd's Fork on the east side of a County road. Thence with said road S 4 1/2 E 23.04 chains to a stake "B" at the angle in said road in the north line of a tract of land formerly owned by C. S. Wolfe. Thence with the line thereof S 81 W 9 chains to a stake "C" on the S. W. side of a branch. Thence with another corner of said tract Thence with another line of said tract S 47 1/2 E 10.75 chains to a stake "D" on the N. E. side of said branch. Thence with another line of said tract S 10 E 15.02 chains to a post "E" in the north line of Edward's tract of land. Thence with the line of said tract S 81 1/2 W 25.50 chains to a stake "F" in the west line of the original survey. Thence with said line N 32-36 E 27.06 chains to a large boulder in the aforesaid branch (marked "H" on the Plat) at the foot of a steep hill side. Thence with the aforesaid branch N 79-8 W to a stake "I" near its mouth and in the aforesaid Todd's Fork. Thence up said stream with the meanderings thereof crossing and recrossing as shown on plat as follows N 5 1/4 W 18 chains to a stake "J" N 3 1/4 E 3.44 chains to an Elm "K" N 89 1/2 E 12.13 chains to a stake "M" S 74 1/2 E 4.50 chains to a Black Walnut "N" S 29 1/2 E 6.13 to a Black Walnut "O" S 80 1/2 E 7.70 chains to the Beginning containing One Hundred Twenty four and 50/100 acres of land.

A correct return of a survey made by me on the 14th day of Nov AD 1901 at the instance of Chas Bell and Letitia Weller
 Byron Franklin
 County Surveyor



Recorded and indexed this 4th day of December A. D. 1901.

Byron Franklin
 County Surveyor