

Fig 2. J. MOSS No 6440.

P. NEAVILLE No 766 SABINA CORP.

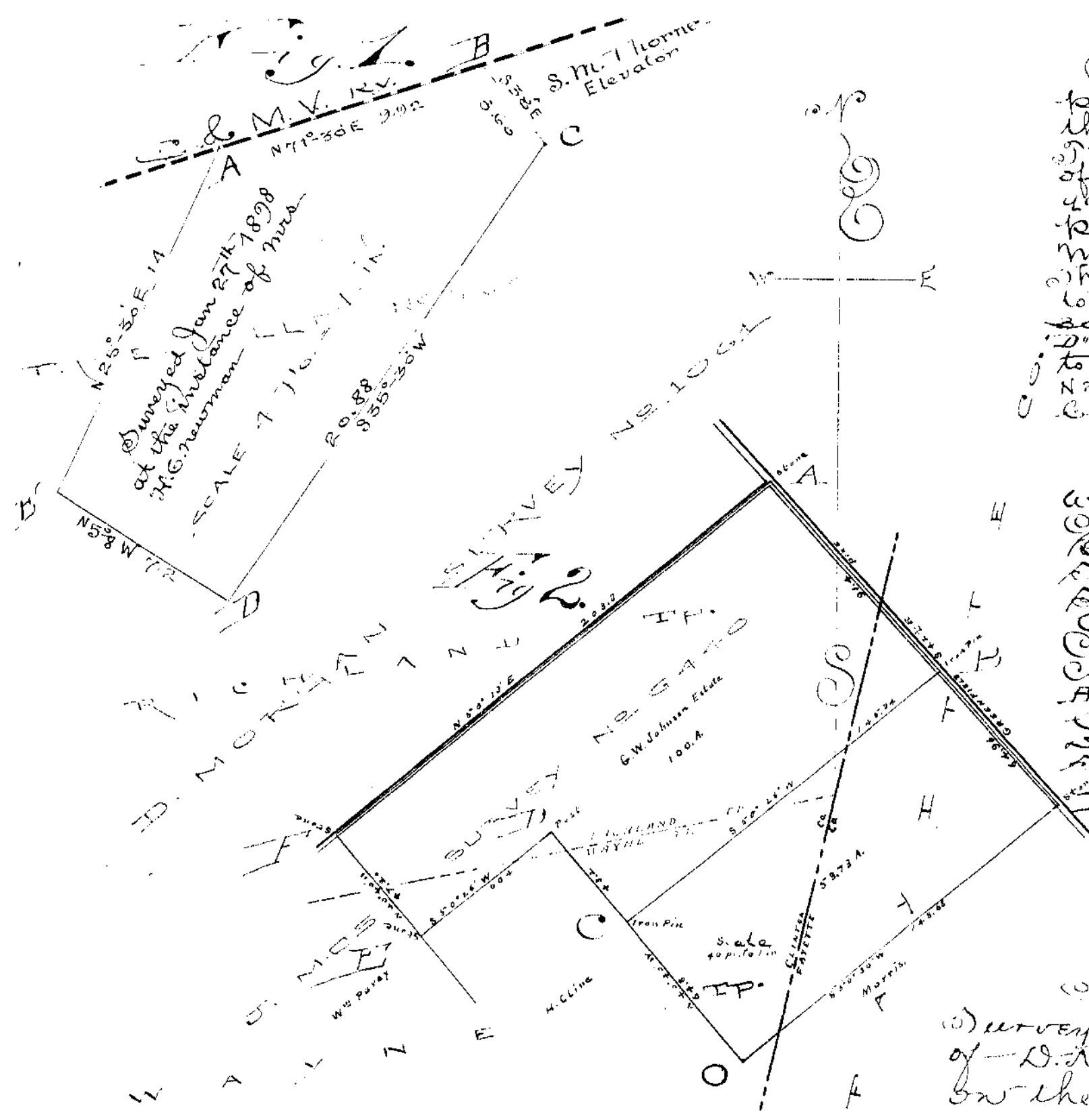


Figure 1.
 Beginning at an iron pin "A" in the center of the C & N. O. R.R. track thence with the center of the same N 71° 30' E 49.2 poles to an iron pin in the center thereof marked "H" on plat. Thence S 38° E 3.50 poles to a stone "C". Thence S 35° 30' W 20.88 poles to a stone "D". Thence N 58° W 7.2 poles to a stone "E". Thence N 25° 30' E 14 poles to the beginning.

Jesse Spurgeon & Co.
 David Diffin
 Written notice given to
 Carey Wilson
 Benj. Doygett
 Spence Plummet
 Stephen Thorne
 Com Jones
 C. M. Ry Co.
 Corners marked at
 A, C, E, D in presence of
 Carey Wilson Benj.
 Doygett H. C. Newman
 Stephen Thorne and
 the chairman
 Byron Franklin
 County Surveyor

Figure Two.
 Surveyed at the instance of D. R. Johnson Admr. on the 13th day of March 1901

Beginning at a stone "A" in the center of the Sabina pipe. Thence with said pipe S 42 1/2° E 41.1 poles to a stone "H". Thence S 50° 26' W 148.68 poles to a stone "C" in H. Cline's line. Thence with his line N 40° 40' W 43.2 poles to a post corner to David Cline. Thence S 50° 26' W 60.4 poles to a stone "E" in the line of Wm. Power. Thence with his line N 40° 40' W 47.20 poles to a stone "I" in the Durrey line. Thence with said line N 60° 13' E 203.3 poles to the place of beginning containing 100 acres.

Recorded and Indexed this Third day of December A.D. 1901.

Byron Franklin
 County Surveyor