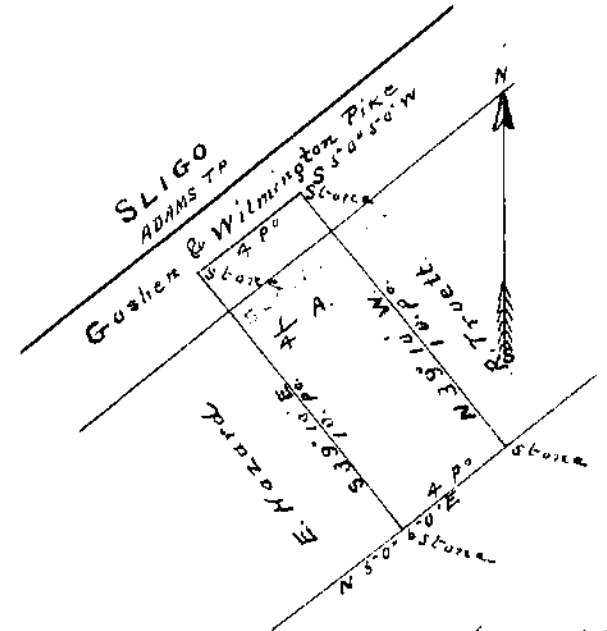


SURVEY NO. 1730
 148 ²¹/₁₀₀ A.
 UNION TR



The above plat represents a survey made by me on the 7th day of January A.D. 1931 at the instance of H. N. Gentrymeyer.
 J. A. Brown
 County Surveyor

The above plat represents a survey made by me on the 31st day of December A.D. 1900 at the instance of H. Hazard

J. A. Brown
 County Surveyor