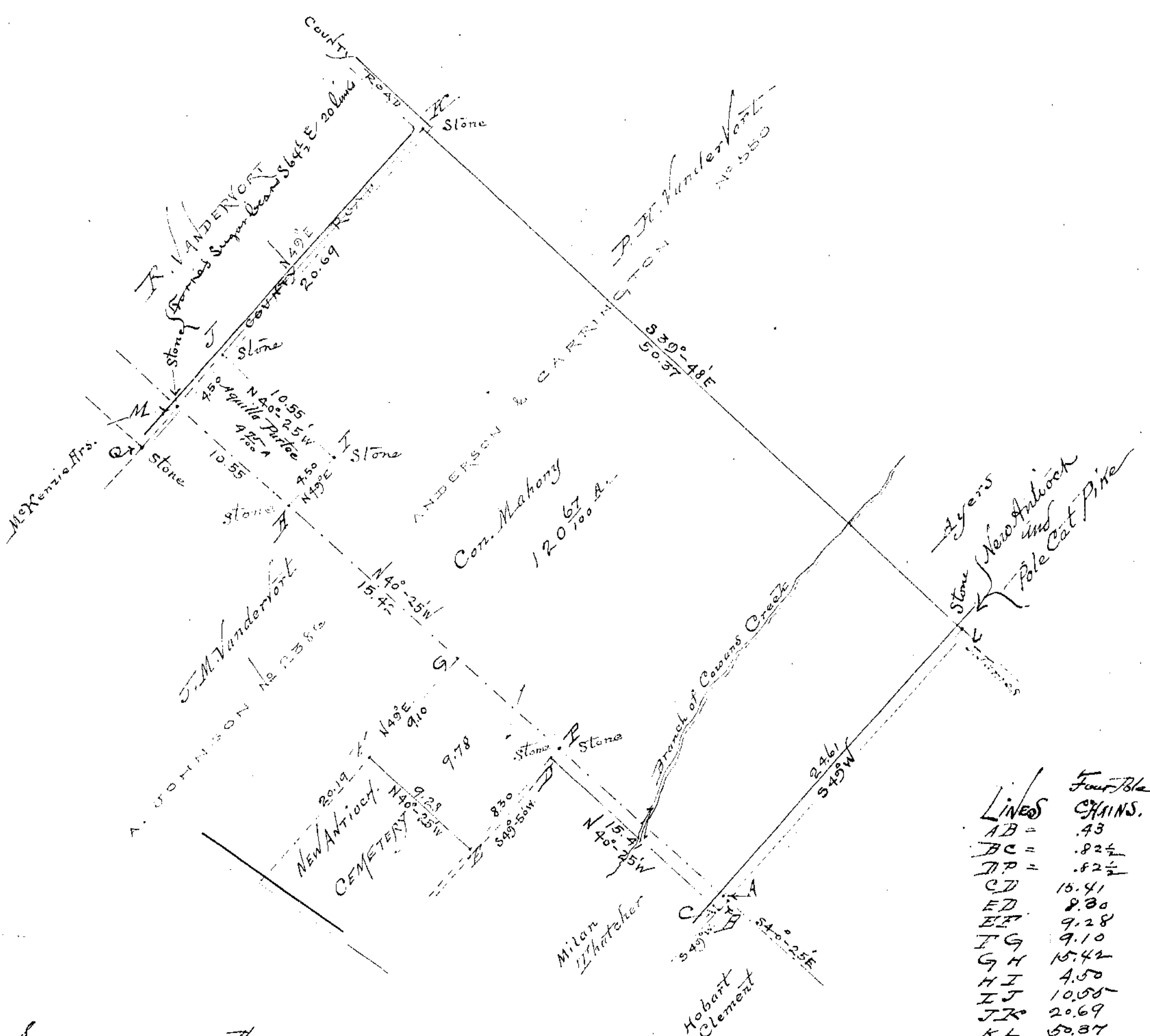


SCALE 5 CH.
 VARIATION $2\frac{1}{4}^{\circ}$ E
 DECLINATION 20° E

Stones were found - at K, M, P & L



LINES	Four Pole CHAINS.
AB =	.43
BC =	.82½
DP =	.82½
CD	15.41
ED	8.30
EF	9.28
IG	9.10
GH	15.42
HI	4.50
IJ	10.55
JK	20.69
KL	50.37
LA	24.61
QM	3.72

Surveyed Oct 13th 1898

Samuel Moon }
 Paul Caseldine } Chain Carriers Sworn.

Line Stone monuments were planted at H, I, J, in presence of Levi H. Curtis, Aquilla Pustee, Con. Mahony Samuel Moon and Paul Caseldine. The Stone in the Original Survey line at B and the Stone at C both are beyond the S. E. Boundary.