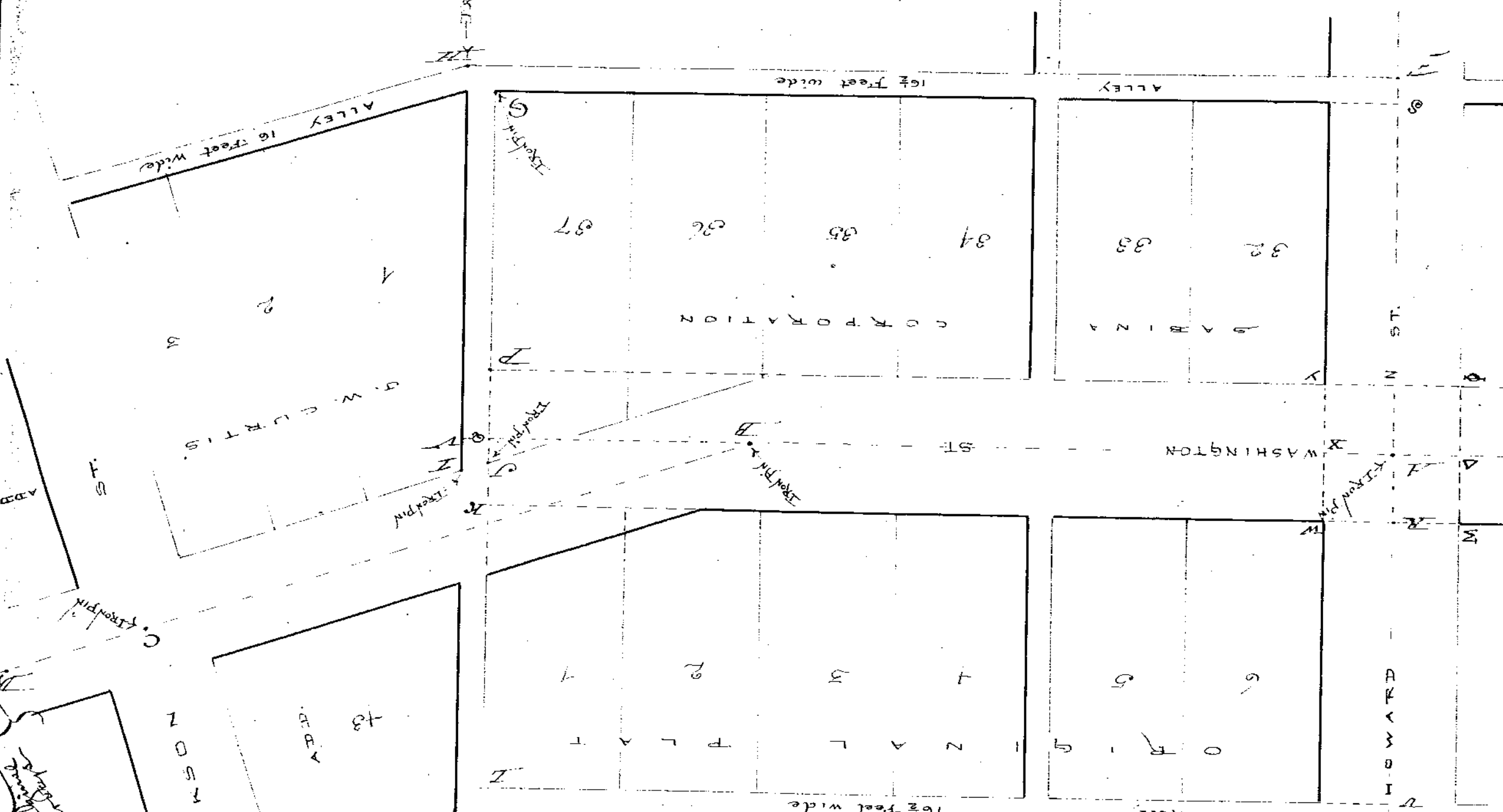


110

at the instance of the Board of Supervisors
of the County of St. Louis
of the County of St. Louis
of the County of St. Louis
of the County of St. Louis

Surveyed Oct. 29, 1897. W. W. ...
of the County of St. Louis
of the County of St. Louis



The Center of Howard St
 and Center of the Alley of the
 County of St. Louis
 is at the intersection of
 the Center of Howard St
 and the Center of the Alley
 of the County of St. Louis
 at the intersection of
 the Center of Howard St
 and the Center of the Alley
 of the County of St. Louis

EXPLANATION

HM	=	462
AB	=	587.6
EAH	=	89-52
FAB	=	90-08
ABC	=	161-42
VI	=	151.25
NI	=	234.75
LTC	=	173.25
OTC	=	189.75
GT	=	229.60
PT	=	56.35
KP	=	82.50
KD	=	26.15
AB	=	394
BC	=	381
BD	=	1239
ALAHVMVH	=	281
AV, AS, Q, R, G	=	214.68
TM	=	469.00
UL	=	59
RK	=	53.75
AG	=	59

feet

The Center of Howard St
 and Center of the Alley of the
 County of St. Louis
 is at the intersection of
 the Center of Howard St
 and the Center of the Alley
 of the County of St. Louis