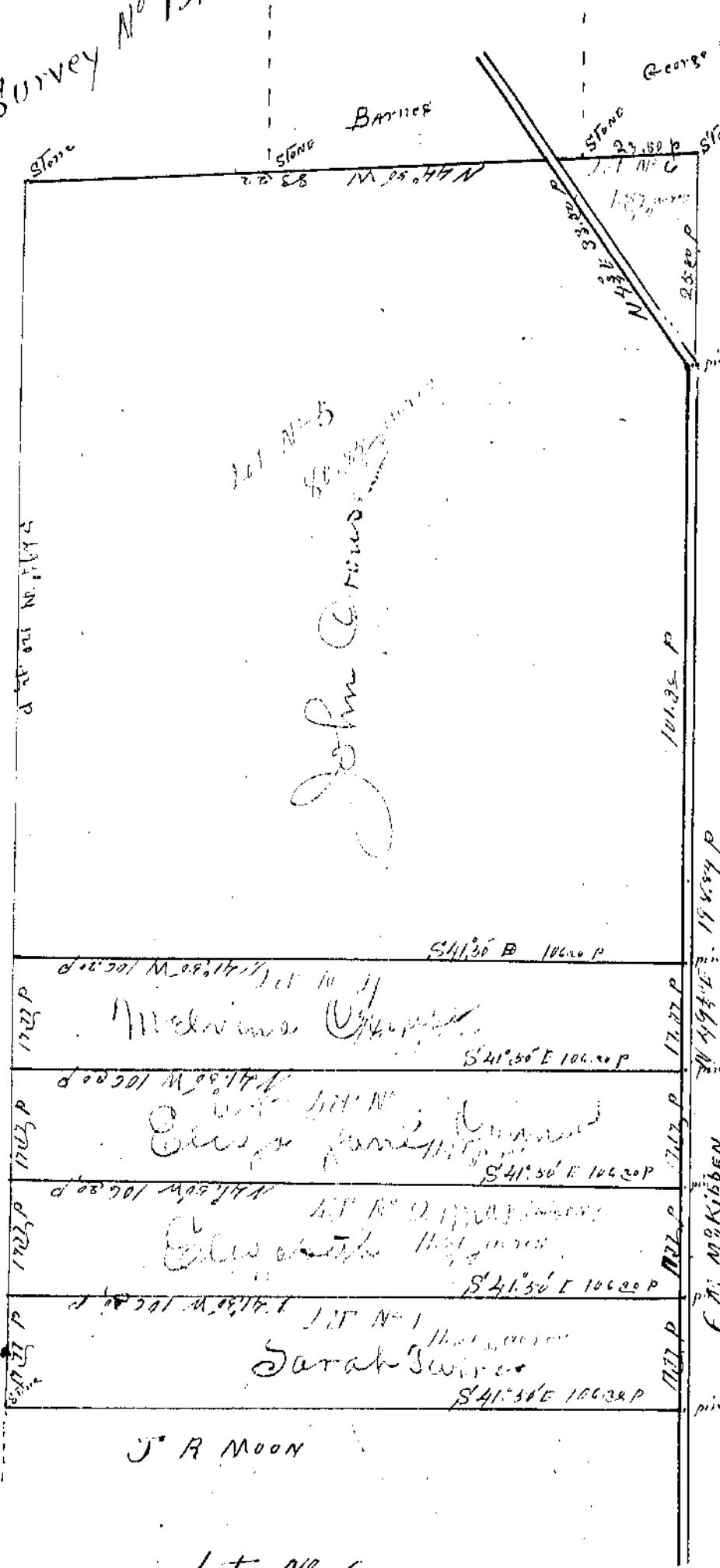


Survey No 1382



At the request of Frank McKibben in May 1871 I made the following Survey and divided the same into 6 lots. Situated in the County of Clinton State of Ohio in Washington Township in Survey No. 1382 first Surveyed the entire town and so as to divide the same into 6 lots.

Lot No. 1
Beginning at an iron pin in the Road leading from Pub. Co. to the Corners in Frank McKibben line and Corner to J. B. Moore land thence with the Center of the road N 49 1/2° E 17.22 poles to a pin in the Center of the road and Corner to Lot No. 2 thence with the line of Lot No. 2 N 41 1/2° W 106.22 poles to a pin in Peter Clerengens line and Corner to Lot No. 2 thence with Clerengens line S 49 1/2° W 17.22 poles to a stone Corner to J. B. Moore land and in H Berlin's line thence with Morris line S 41 1/2° E 106.22 poles to the beginning. Containing 11.87 acres of land.

Lot No. 2
Beginning at a pin in the Road in front of McKibben's line and Corner to Lot No. One on Sharon on plot thence with the Center of the road N 49 1/2° E 17.22 poles to a pin in the Center of the road and Corner to Lot No. 3 thence with the line of Lot No. 3 N 41 1/2° W 106.22 poles to a pin in Peter Clerengens line and Corner to Lot No. 3 thence with Clerengens line S 49 1/2° W 17.22 poles to a pin in Clerengens line and Corner to Lot No. One thence with the line of Lot No. One S 41 1/2° E 106.22 poles to the beginning. Containing 11.87 acres of land.

Lot No. 3
Beginning at a pin in the Center of the road in front of McKibben's line and Corner to Lot No. 2 thence with the Center of the road N 49 1/2° E 17.22 poles to a pin in the road and Corner to Lot No. 4 thence with the line of Lot No. 4 N 41 1/2° W 106.22 poles to a pin in Peter Clerengens line and Corner to Lot No. 4 thence with Clerengens line S 49 1/2° W 17.22 poles to a pin in Peter Clerengens line and Corner to Lot No. 2 thence with the line of Lot No. 2 S 41 1/2° E 106.22 poles to the beginning. Containing 11.87 acres of land.

Lot No. 4
Beginning at a pin in the Center of the road in front of McKibben's line and Corner to Lot No. 5 thence with the Center of the road N 49 1/2° E 17.22 poles to a pin in the road and Corner to Lot No. 5 thence with the line of Lot No. 5 N 41 1/2° W 106.22 poles to a pin in Peter Clerengens line and Corner to Lot No. 5 thence with Clerengens line S 49 1/2° W 17.22 poles to a pin in Peter Clerengens line and Corner to Lot No. 3 thence with the line of Lot No. 3 S 41 1/2° E 106.22 poles to the beginning. Containing 11.87 acres of land.

Lot No. 6
Beginning at a pin in a Road in the road) Corner to Lot No. 5 and in McKibben's line thence with McKibben's line N 49 1/2° E 23.52 poles to a Stone in George Cross's line thence with Cross's line N 41 1/2° W 23.52 poles to a pin in the Center of the road and Corner to Lot No. 5 thence with the line of Lot No. 5 S 41 1/2° E 106.22 poles to the beginning. Containing 1.29 acres of land.

Lot No. 5
Beginning at a pin in the Center of the road in front of McKibben's line and Corner to Lot No. 4 thence with the Center of the road N 49 1/2° E 101.22 poles to a pin in the Center of the road and Corner to Lot No. 6 thence with the line of Lot No. 6 and Center of the road N 49 1/2° E 33.52 poles to a pin in the Center of the road and Corner to Lot No. 5 and in Barnes's line thence with Barnes's line N 49 1/2° W passing Barnes's and Clerengens Corner 83.22 poles to a Stone Corner to Clerengens land thence with Clerengens line S 49 1/2° W 106.22 poles to a pin in Peter Clerengens line and Corner to Lot No. 4 thence with the line of Lot No. 4 S 41 1/2° E 106.22 poles to the beginning. Containing 80.87 acres of land.

H Berlin

J. R. Moon

Alfred Mackay Surveyor