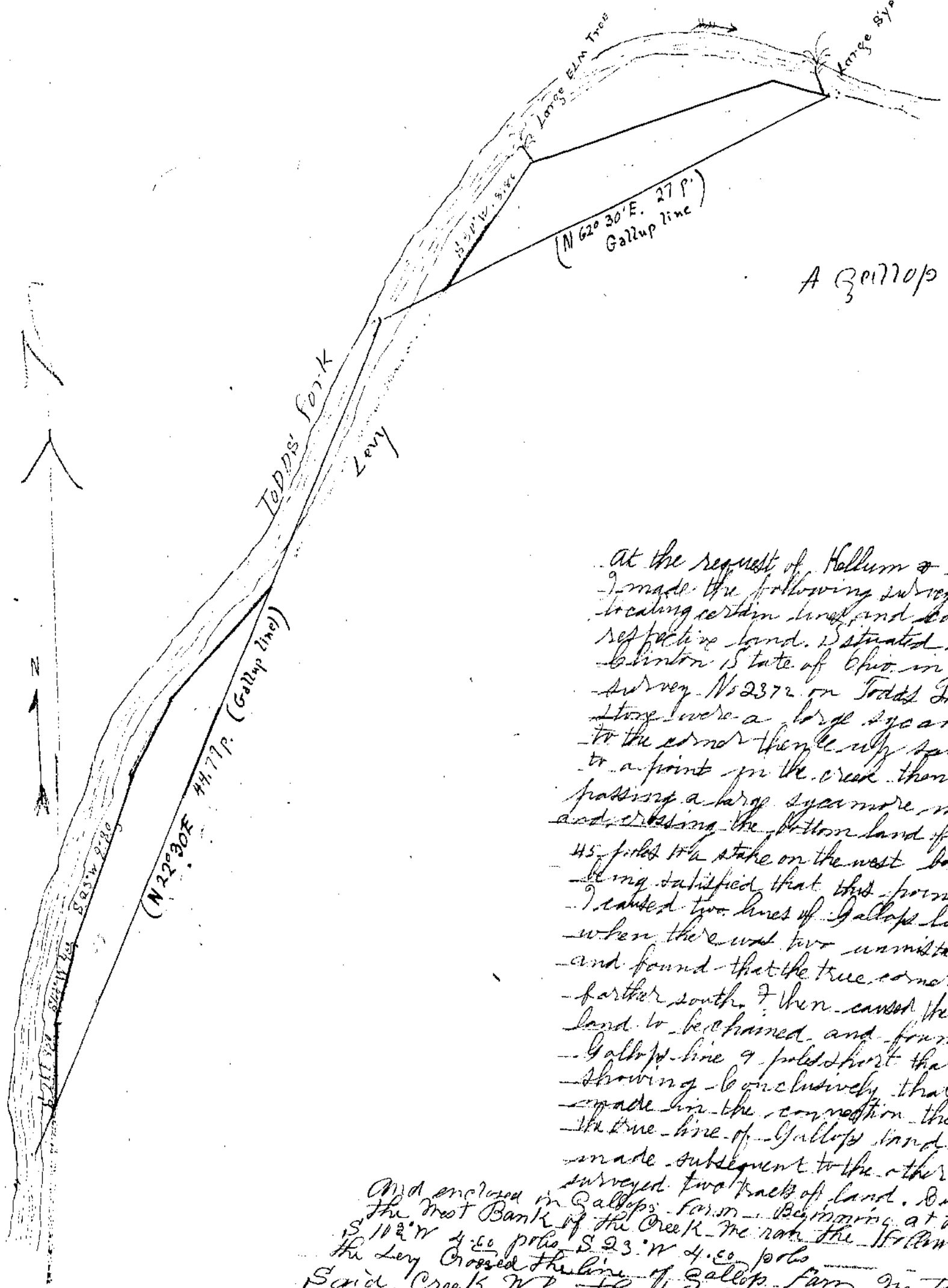


Kelum

SURVEY No 2372



at the request of Kelum & Gallup on July 2-7 1894. I made the following survey for the purpose of locating certain land and corners between their respective land. Situated in the County of Clinton State of Ohio in Adams Township in Survey No 2372 on Todd's Fork Beginning at a stone were a large sycamore tree, both a north and to the corner then e. up said creek N 60° E 22 poles to a point in the creek thence up said creek passing a large sycamore, marked for a line tree and crossing the bottom land of said stream N 2 1/2° E 45 poles to a stake on the west bank of the creek. Not being satisfied that this point was the true corner I caused two lines of Gallup's land to be measured when there was two unmistakable corners marked and found that the true corner of Gallup's land was farther south. I then caused the east line of Kelum's land to be chained and found that it intersected Gallup's line 9 poles short that called in mind the showing conclusively that there was a mistake made in the connection the surveyor not finding the true line of Gallup's land as the survey was made subsequent to the other survey. Kelum surveyed two tracts of land. Out off by the Levy and enclosed in Gallup's farm. Beginning at the corner of the Levy on the West Bank of the Creek. The north the following lines S 24° E 18.50 S 11 1/2° W 4.50 poles S 23° W 4.50 poles the Levy crossed the line of Gallup's farm. S 43° W 9.50 to where said Creek where the Levy crossed the first line of Gallup's land an run and ran the following lines S 30° W passing the end of the Levy 8.50 poles to a large hollow Elm tree thence S 60°

13, 12