

PROPOSED ANNEXATION TO THE CITY OF WILMINGTON

SITUATED IN VMS 1170
UNION TOWNSHIP
CLINTON COUNTY OHIO

453.474 AC.
TO BE ANNEXED TO THE
CITY OF WILMINGTON

CLINTON COUNTY ENGINEERS
RECORD OF LAND DIVISION

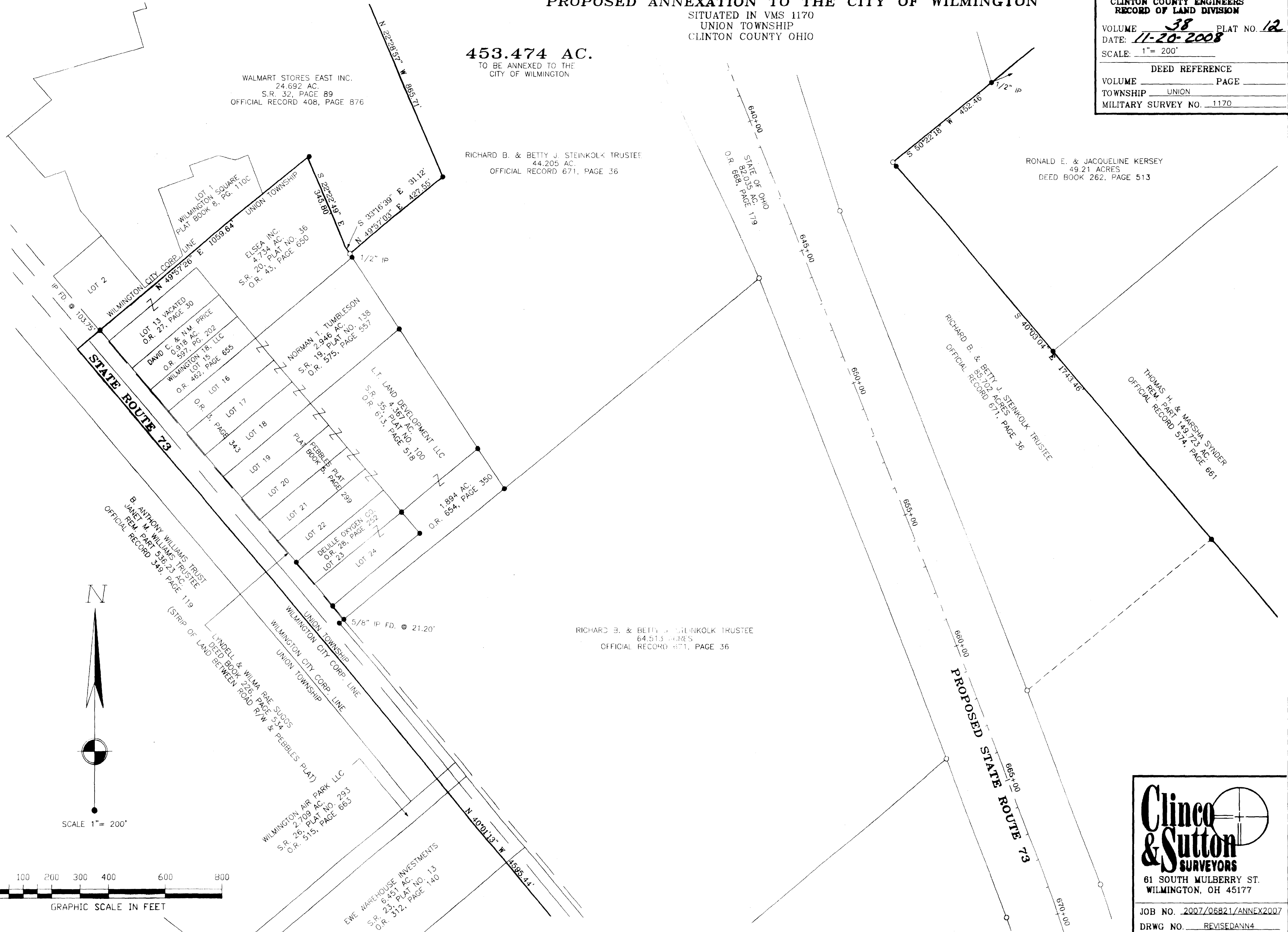
VOLUME 38 PLAT NO. 12
DATE: 11-20-2008
SCALE: 1" = 200'

DEED REFERENCE
VOLUME _____ PAGE _____
TOWNSHIP UNION
MILITARY SURVEY NO. 1170

WALMART STORES EAST INC.
24.692 AC.
S.R. 32, PAGE 89
OFFICIAL RECORD 408, PAGE 876

RICHARD B. & BETTY J. STEINKOLK TRUSTEE
44.205 AC.
OFFICIAL RECORD 671, PAGE 36

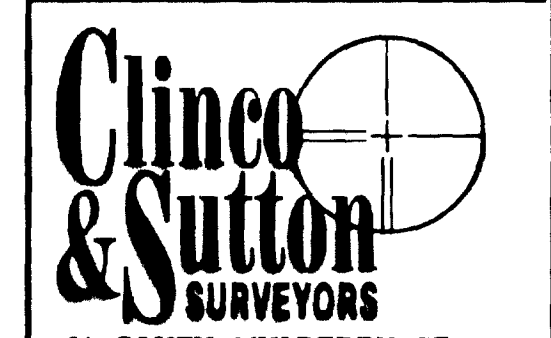
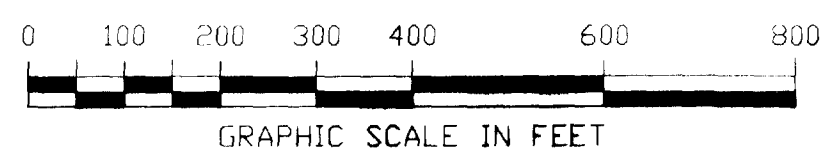
RONALD E. & JACQUELINE KERSEY
49.21 ACRES
DEED BOOK 262, PAGE 513



N



SCALE 1" = 200'



61 SOUTH MULBERRY ST.
WILMINGTON, OH 45177

JOB NO. 2007/06821/ANNEX2007

DRWG NO. REVISEDANN4

DATE: JANUARY 2007

SHEET 4 OF 5