

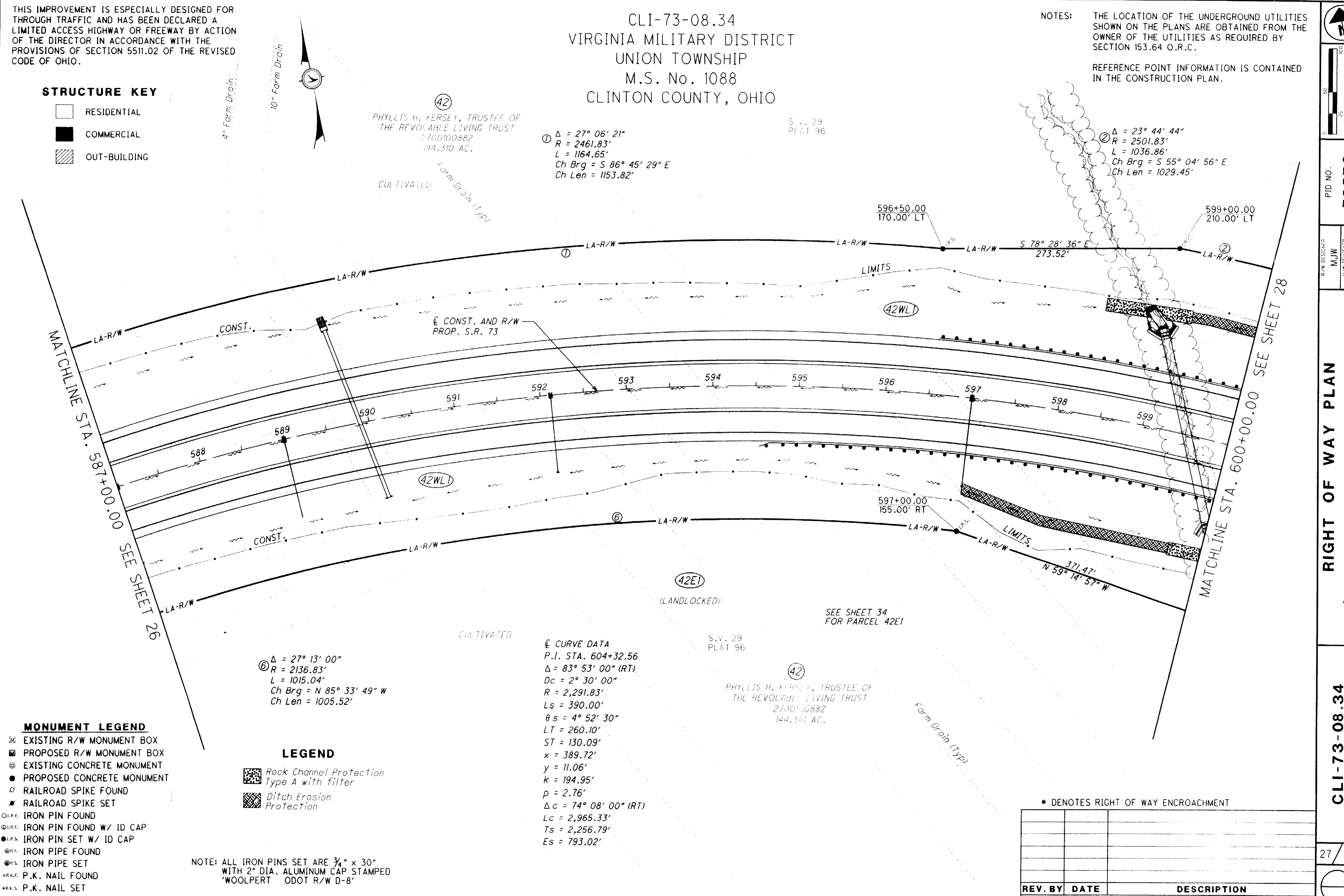
THIS IMPROVEMENT IS ESPECIALLY DESIGNED FOR THROUGH TRAFFIC AND HAS BEEN DECLARED A LIMITED ACCESS HIGHWAY OR FREEWAY BY ACTION OF THE DIRECTOR IN ACCORDANCE WITH THE PROVISIONS OF SECTION 5511.02 OF THE REVISED CODE OF OHIO.

CLI-73-08.34  
 VIRGINIA MILITARY DISTRICT  
 UNION TOWNSHIP  
 M.S. No. 1088  
 CLINTON COUNTY, OHIO

NOTES: THE LOCATION OF THE UNDERGROUND UTILITIES SHOWN ON THE PLANS ARE OBTAINED FROM THE OWNER OF THE UTILITIES AS REQUIRED BY SECTION 153.64 O.R.C.  
 REFERENCE POINT INFORMATION IS CONTAINED IN THE CONSTRUCTION PLAN.

**STRUCTURE KEY**

- RESIDENTIAL
- COMMERCIAL
- OUT-BUILDING



G:\SV\PRCJA\63484 CLI-73-1180\78570\row\sheet\78570RFP002.dgn

**MONUMENT LEGEND**

- EXISTING R/W MONUMENT BOX
- PROPOSED R/W MONUMENT BOX
- EXISTING CONCRETE MONUMENT
- PROPOSED CONCRETE MONUMENT
- RAILROAD SPIKE FOUND
- RAILROAD SPIKE SET
- IRON PIN FOUND
- IRON PIN FOUND W/ ID CAP
- IRON PIN SET W/ ID CAP
- IRON PIPE FOUND
- IRON PIPE SET
- P.K. NAIL FOUND
- P.K. NAIL SET

**LEGEND**

- Rock Channel Protection Type A with filter
- Ditch Erosion Protection

NOTE: ALL IRON PINS SET ARE 3/4" x 30" WITH 2" DIA. ALUMINUM CAP STAMPED 'WOOLPERT ODOT R/W D-8'

37 28

HORIZONTAL SCALE IN FEET

PID NO. 78570

R/W DESIGNER MJW

I/W REVIEWER SWN

RIGHT OF WAY PLAN  
 STA 587+00 TO STA 600+00

CLI-73-08.34

27 / 37

REV. BY	DATE	DESCRIPTION
	May 2, 2007	

\* DENOTES RIGHT OF WAY ENCROACHMENT