

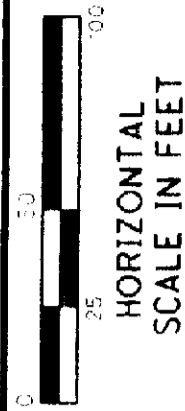
NOTES: THE LOCATION OF THE UNDERGROUND UTILITIES SHOWN ON THE PLANS ARE OBTAINED FROM THE OWNER OF THE UTILITIES AS REQUIRED BY SECTION 153.64 O.R.C.

REFERENCE POINT INFORMATION IS CONTAINED IN THE CONSTRUCTION PLAN.

CLI-73-08.34
 VIRGINIA MILITARY DISTRICT
 UNION TOWNSHIP
 M.S. No. 1088
 CLINTON COUNTY, OHIO

STRUCTURE KEY

- RESIDENTIAL
- COMMERCIAL
- OUT-BUILDING



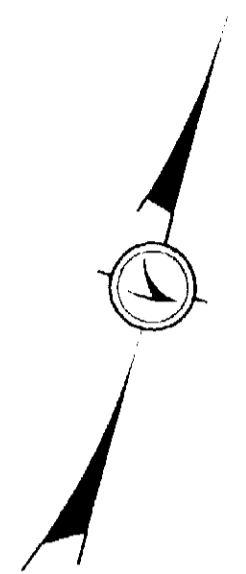
PID NO. 78570

P.W. DESIGNER MJW
 P.W. REVIEWER SWN

RIGHT OF WAY PLAN
 STA 573+00 TO STA 587+00

CLI-73-08.34

26 / 37



44
 ANN E. JOHNSON, TRUSTEE
 DANIEL R. JOHNSON, TRUSTEE
 2700189187
 81.540 AC.

44
 ANN E. JOHNSON, TRUSTEE
 DANIEL R. JOHNSON, TRUSTEE
 2700100726
 177.843 AC.

42
 PHYLLIS H. KERSEY, TRUSTEE OF
 THE REVOCABLE LIVING TRUST
 2700100882
 144.310 AC.

44
 ANN E. JOHNSON, TRUSTEE
 DANIEL R. JOHNSON, TRUSTEE
 2700189187
 81.540 AC.

④ CURVE DATA
 P.I. STA. 604+32.56
 $\Delta = 83^\circ 53' 00''$ (RT)
 $Dc = 2^\circ 30' 00''$
 $R = 2,291.83'$
 $Ls = 390.00'$
 $\theta s = 4^\circ 52' 30''$
 $LT = 260.10'$
 $ST = 130.09'$
 $x = 389.72'$
 $y = 11.06'$
 $k = 194.95'$
 $p = 2.76'$
 $\Delta c = 74^\circ 08' 00''$ (RT)
 $Lc = 2,965.33'$
 $Ts = 2,256.79'$
 $Es = 793.02'$

⑥ $\Delta = 27^\circ 13' 00''$
 $R = 2136.83'$
 $L = 1015.04'$
 $Ch\ Brg = N 85^\circ 33' 49'' W$
 $Ch\ Len = 1005.52'$

* DENOTES RIGHT OF WAY ENCROACHMENT

REV. BY	DATE	DESCRIPTION
JDH	4/26/07	CHANGED PAR. 44T7,44T8 TO 44WA7,44WA8
DATE COMPLETED		May 2, 2007

MATCHLINE STA. 573+00.00 SEE SHEET 25

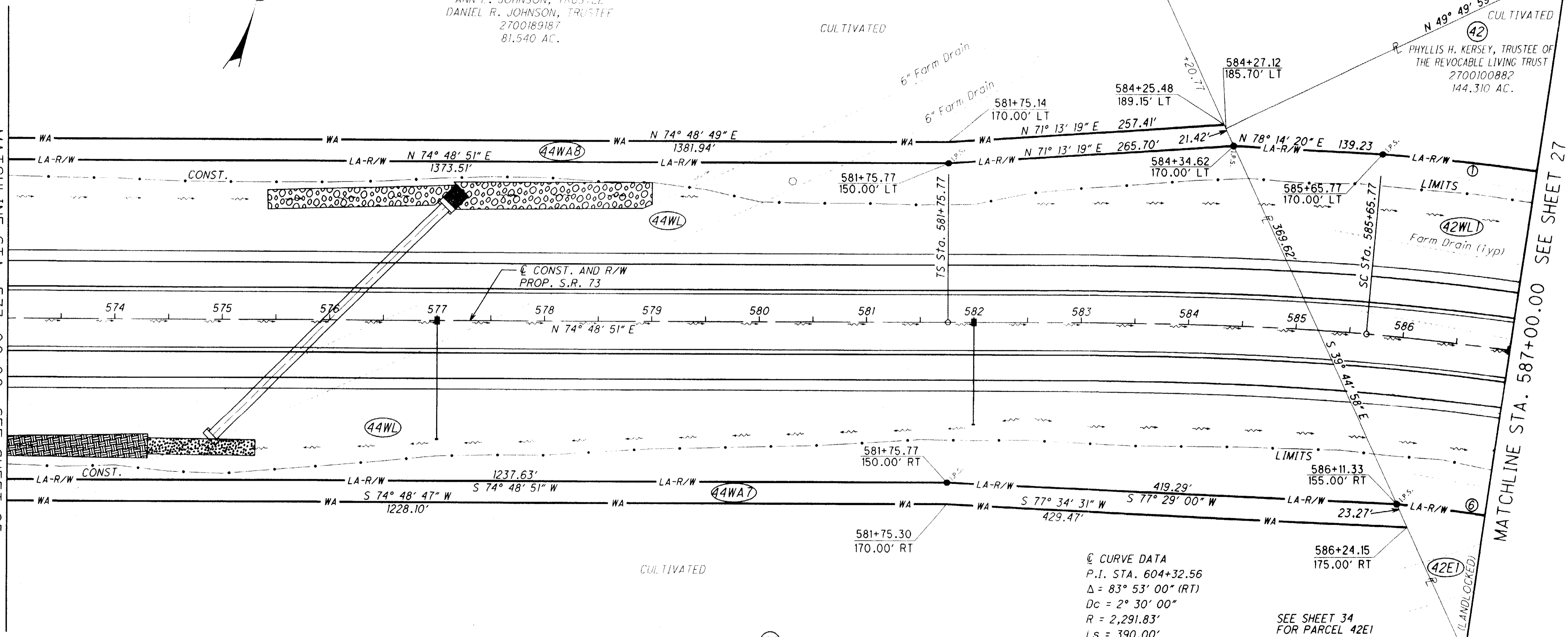
MATCHLINE STA. 587+00.00 SEE SHEET 27

- MONUMENT LEGEND**
- EXISTING R/W MONUMENT BOX
 - PROPOSED R/W MONUMENT BOX
 - EXISTING CONCRETE MONUMENT
 - PROPOSED CONCRETE MONUMENT
 - RAILROAD SPIKE FOUND
 - RAILROAD SPIKE SET
 - IRON PIN FOUND
 - IRON PIN FOUND W/ ID CAP
 - IRON PIN SET W/ ID CAP
 - IRON PIPE FOUND
 - IRON PIPE SET
 - P.K. NAIL FOUND
 - P.K. NAIL SET

NOTE: ALL IRON PINS SET ARE 3/4" x 30" WITH 2" DIA. ALUMINUM CAP STAMPED 'WOOLPERT ODOT R/W D-8'

THIS IMPROVEMENT IS ESPECIALLY DESIGNED FOR THROUGH TRAFFIC AND HAS BEEN DECLARED A LIMITED ACCESS HIGHWAY OR FREEWAY BY ACTION OF THE DIRECTOR IN ACCORDANCE WITH THE PROVISIONS OF SECTION 5511.02 OF THE REVISED CODE OF OHIO.

- LEGEND**
- Turf Reinforcing mat. type 1
 - Rock Channel Protection Type A with filler
 - Ditch Erosion Protection



G:\SW\PROJ\63484 CLI-73-1180\78570\row\sheet\78570RPO03.dgn