

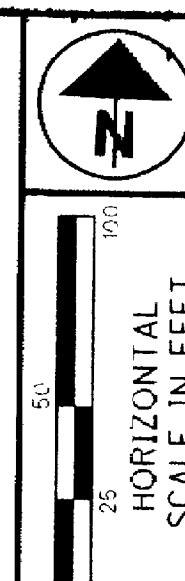
MONUMENT LEGEND

- ◻ EXISTING R/W MONUMENT BOX
- ◻ PROPOSED R/W MONUMENT BOX
- ⊙ EXISTING CONCRETE MONUMENT
- PROPOSED CONCRETE MONUMENT
- ⊙ RAILROAD SPIKE FOUND
- ✱ RAILROAD SPIKE SET
- I.P.F. IRON PIN FOUND
- ⊙ I.P.F. IRON PIN FOUND W/ ID CAP
- I.P.S. IRON PIN SET W/ ID CAP
- ⊙ I.P.F. IRON PIPE FOUND
- ⊙ I.P.S. IRON PIPE SET
- R.K.F. P.K. NAIL FOUND
- R.K.S. P.K. NAIL SET

VIRGINIA MILITARY DISTRICT
UNION TOWNSHIP
V.M.S. No. 1556
CLINTON COUNTY, OHIO

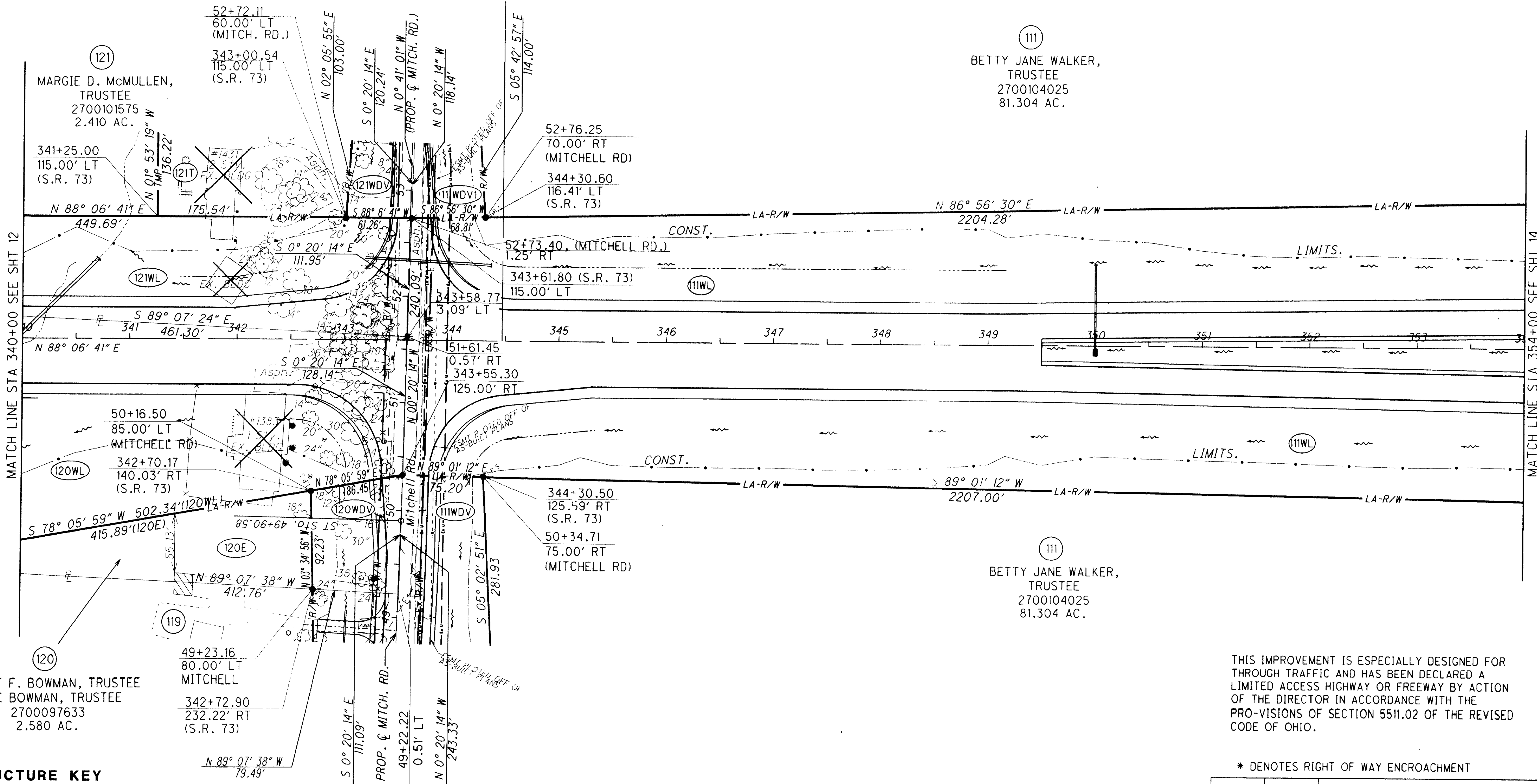
NOTES: THE LOCATION OF THE UNDERGROUND UTILITIES SHOWN ON THE PLANS ARE OBTAINED FROM THE OWNER OF THE UTILITIES AS REQUIRED BY SECTION 153.64 O.R.C.
REFERENCE POINT INFORMATION IS CONTAINED IN THE CONSTRUCTION PLAN.

32 P. 239
6-26-2008



FOR CONTINUATION OF MITCHELL RD R/W, SEE SHTS 22,23

BEGIN PROJECT
STA. 344+47.06



MATCH LINE STA 340+00 SEE SHT 12

MATCH LINE STA 354+00 SEE SHT 14

ROBERT F. BOWMAN, TRUSTEE
JANE BOWMAN, TRUSTEE
2700097633
2.580 AC.

BETTY JANE WALKER,
TRUSTEE
2700104025
81.304 AC.

BETTY JANE WALKER,
TRUSTEE
2700104025
81.304 AC.

- STRUCTURE KEY**
- ◻ RESIDENTIAL
 - ◼ COMMERCIAL
 - ▨ OUT-BUILDING

FOR CONTINUATION OF MITCHELL RD R/W, SEE SHTS 20,21

THIS IMPROVEMENT IS ESPECIALLY DESIGNED FOR THROUGH TRAFFIC AND HAS BEEN DECLARED A LIMITED ACCESS HIGHWAY OR FREEWAY BY ACTION OF THE DIRECTOR IN ACCORDANCE WITH THE PROVISIONS OF SECTION 5511.02 OF THE REVISED CODE OF OHIO.

* DENOTES RIGHT OF WAY ENCROACHMENT

NOTE: ALL IRON PINS SET ARE 3/4" x 30" WITH 2" DIA. ALUMINUM CAP STAMPED 'WOOLPERT ODOT R/W D-8'

REV. BY	DATE	DESCRIPTION

PID NO. 78571

R/W DESIGNER MJW
PLAN REVIEWER SWN

RIGHT OF WAY PLAN
STA 340+00 TO STA 354+00

CLI-73-6.52

13 / 32