

CLI-73-08.34
 VIRGINIA MILITARY DISTRICT
 UNION TOWNSHIP
 M.S. No. 2690
 CLINTON COUNTY, OHIO

NOTE: ALL IRON PINS SET ARE 3/4" x 30"
 WITH 2" DIA. ALUMINUM CAP STAMPED
 'WOOLPERT ODOT R/W D-8'

- MONUMENT LEGEND**
- ☐ EXISTING R/W MONUMENT BOX
 - PROPOSED R/W MONUMENT BOX
 - ⊙ EXISTING CONCRETE MONUMENT
 - PROPOSED CONCRETE MONUMENT
 - ✕ RAILROAD SPIKE FOUND
 - ✦ RAILROAD SPIKE SET
 - I.P.F. IRON PIN FOUND
 - ⊙ I.P.F. IRON PIN FOUND W/ ID CAP
 - I.P.S. IRON PIN SET W/ ID CAP
 - ⊙ I.P. IRON PIPE FOUND
 - I.P.S. IRON PIPE SET
 - P.K.F. P.K. NAIL FOUND
 - P.K.S. P.K. NAIL SET



PID NO. 78570
 R/W DESIGNER MJW
 R/W REVIEWER SWN

RIGHT OF WAY PLAN
 STA 518+00 TO STA 532+00

CLI-73-08.34

22 / 37

55
 FRANCIS O. RICHARDSON
 HELEN M. RICHARDSON
 2700097716
 69.420 AC.

FOR CONTINUATION OF
 R/W FOR PRAIRIE ROAD,
 SEE SHEETS 32-33

50
 NEIL L. BEVAN
 DIXIE BEVAN
 2700219008
 2.000 AC.

44
 ANN E. JOHNSON, TRUSTEE
 DANIEL R. JOHNSON, TRUSTEE
 2700098813
 67.091 AC.

S.V. 15
 PLAT 326
 S.V. 23
 PLAT 107

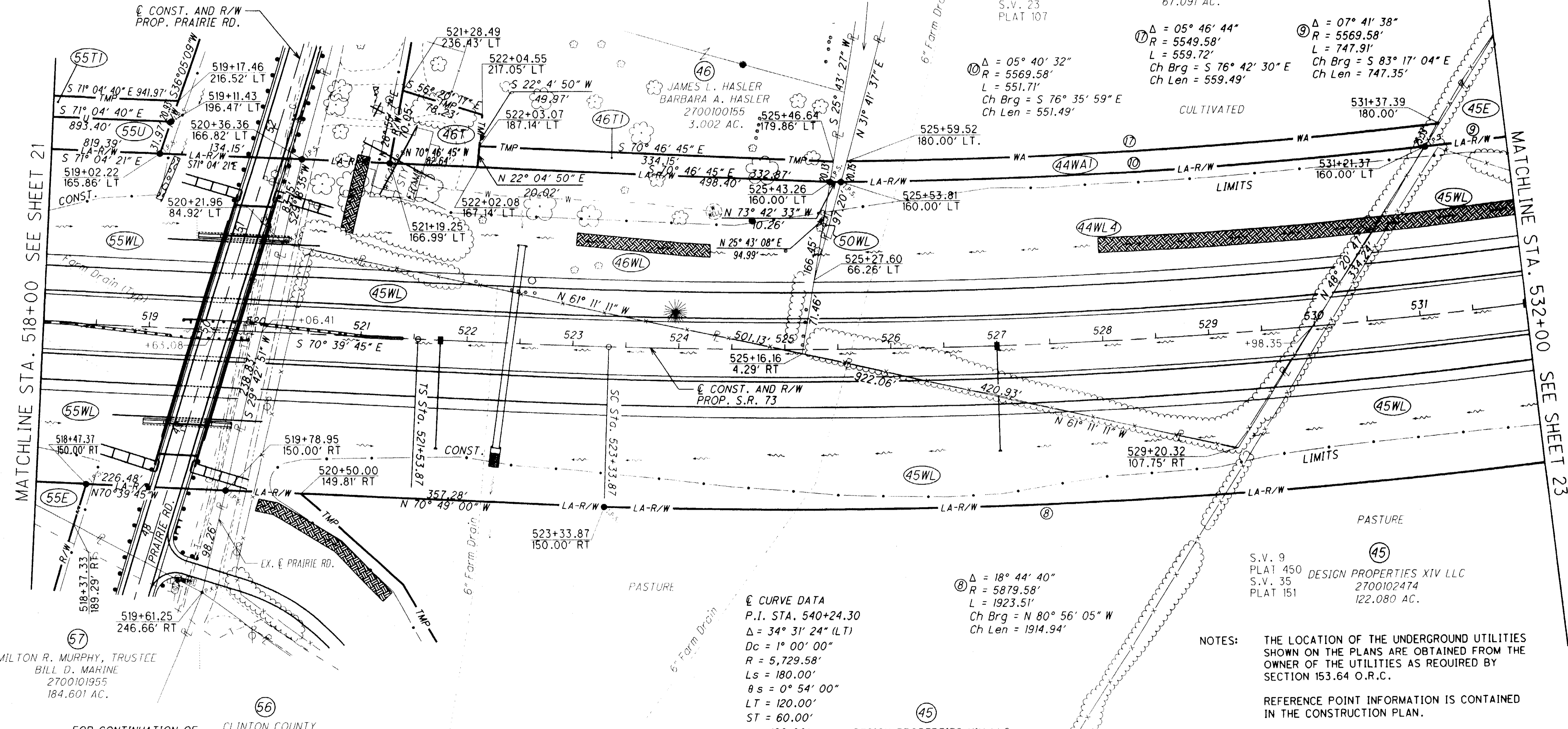
⑩ Δ = 05° 46' 44"
 R = 5549.58'
 L = 559.72'
 Ch Brg = S 76° 42' 30" E
 Ch Len = 559.49'

⑨ Δ = 07° 41' 38"
 R = 5569.58'
 L = 747.91'
 Ch Brg = S 83° 17' 04" E
 Ch Len = 747.35'

⑪ Δ = 05° 40' 32"
 R = 5569.58'
 L = 551.71'
 Ch Brg = S 76° 35' 59" E
 Ch Len = 551.49'

S.V. 9
 PLAT 450
 S.V. 35
 PLAT 151
 DESIGN PROPERTIES XIV LLC
 2700102474
 122.080 AC.

⑧ Δ = 18° 44' 40"
 R = 5879.58'
 L = 1923.51'
 Ch Brg = N 80° 56' 05" W
 Ch Len = 1914.94'



MATCHLINE STA. 518+00 SEE SHEET 21

MATCHLINE STA. 532+00 SEE SHEET 23

FOR CONTINUATION OF
 R/W FOR PRAIRIE ROAD,
 SEE SHEETS 29-31

56
 CLINTON COUNTY
 COMMISSIONERS
 2700217211
 30.860 AC.

57
 MILTON R. MURPHY, TRUSTEE
 BILL D. MARINE
 2700101955
 184.601 AC.

THIS IMPROVEMENT IS ESPECIALLY DESIGNED FOR THROUGH TRAFFIC AND HAS BEEN DECLARED A LIMITED ACCESS HIGHWAY OR FREEWAY BY ACTION OF THE DIRECTOR IN ACCORDANCE WITH THE PROVISIONS OF SECTION 5511.02 OF THE REVISED CODE OF OHIO.

- LEGEND**
- ⊙ Turf Reinforcing mat. type I
 - ▨ Ditch Erosion Protection

- STRUCTURE KEY**
- RESIDENTIAL
 - COMMERCIAL
 - ▨ OUT-BUILDING

NOTES:
 THE LOCATION OF THE UNDERGROUND UTILITIES SHOWN ON THE PLANS ARE OBTAINED FROM THE OWNER OF THE UTILITIES AS REQUIRED BY SECTION 153.64 O.R.C.
 REFERENCE POINT INFORMATION IS CONTAINED IN THE CONSTRUCTION PLAN.

* DENOTES RIGHT OF WAY ENCROACHMENT

REV. BY	DATE	DESCRIPTION
JDH	4/26/07	CHANGED PARCEL 44T1 TO 44WA1
MJW	8/23/06	UPDATED PROPERTY OWNER PARCEL 45,57
DATE COMPLETED		May 2, 2007

G:\S1\PROJ\63484 CLI-73-1180\78570\row\sheet\78570RPOC07.dgn