

PLAT OF SURVEY

SITUATED IN
V.M.S. NO. 1057
CITY OF WILMINGTON
CLINTON COUNTY
OHIO

VOLUME 35 PLAT NO. 169
CLINTON COUNTY ENGINEER'S
RECORD OF LAND SURVEY'S 9-13-05

APPROVED BY THE CITY OF WILMINGTON, OHIO
ON THIS 9 DAY OF September, 2005

MAYOR
Karen Lopez
CITY CLERK

DONALD J. RAUCH, ET AL
D.B. 284, PG. 662
TRACT VI
6.81 AC.

CURVE TABLE					
CURVE	RADIUS	ARC LENGTH	CHORD LENGTH	CHORD BEARING	DELTA ANGLE
C1	144.58'	98.40'	96.52'	S 63°41'45" E	38°59'52"

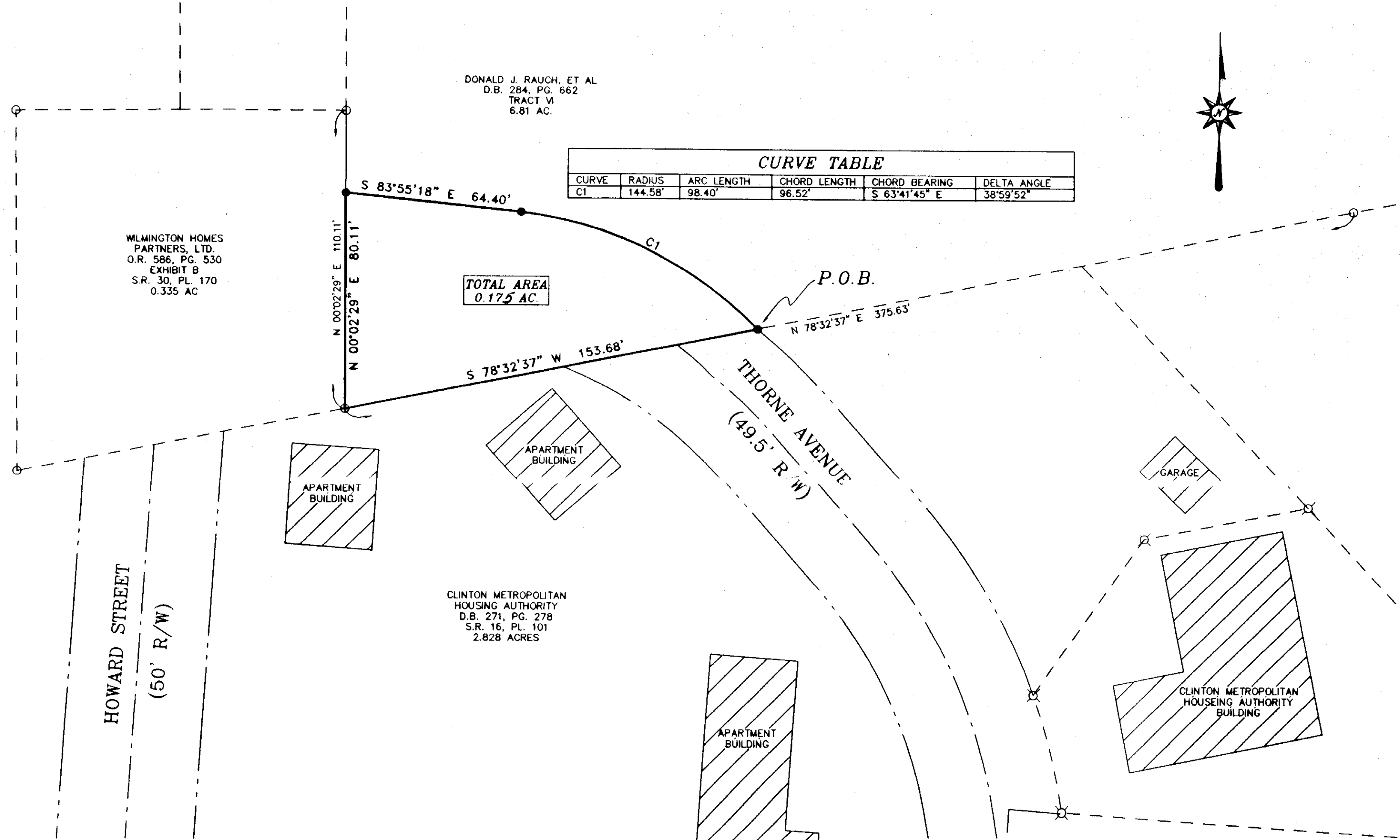
WILMINGTON HOMES
PARTNERS, LTD.
O.R. 586, PG. 530
EXHIBIT B
S.R. 30, PL. 170
0.335 AC

TOTAL AREA
0.175 AC.

DEED REFERENCE
DONALD J. RAUCH
D.B. 284, PG. 662
6.81 AC.

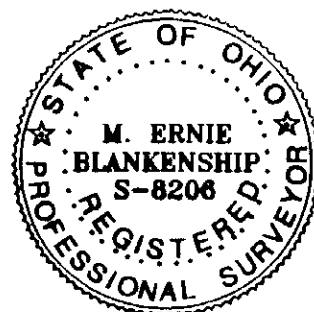
LEGEND
STANDARD SYMBOLS THAT MAY
APPEAR ON THIS DRAWING:

- IP SET - 5/8"
- IP FOUND - 5/8"
- ⊗ DRILL HOLE IN CONCRETE FND.



APPROVED FOR
MATHEMATICAL ACCURACY
CLINTON COUNTY ENGINEER
Per *Wang*

NOTES:
BASIS OF BEARINGS S 78°32'37" W FROM
S.R. 34, PLAT 109 OF THE RECORD OF
LAND DIVISION FOR CLINTON COUNTY
DEED RECORDS AS SHOWN ON PLAT ARE
SOURCE DOCUMENT.
OCCUPATION IN GENERAL FITS SURVEY.
ALL MONUMENTS IN GOOD CONDITION.



I HEREBY CERTIFY THIS TO BE A CORRECT PLAT OF A
SURVEY MADE UNDER MY DIRECTION IN JULY, 2005.

M. Ernie Blankenship
M. ERNIE BLANKENSHIP, S-8206

0' 30' 60' 90'
SCALE: 1" = 30'

PLAT OF SURVEY	
CITY OF WILMINGTON HOWARD STREET CLINTON COUNTY, OHIO	
<p>BLANKENSHIP & ASSOCIATES, INC. CIVIL ENGINEERS ~ LAND SURVEYORS 115 WEST MAIN STREET WILMINGTON, OHIO 45177 TELEPHONE: (937) 382-0704 FACSIMILE: (937) 382-0704</p>	DATE: JULY, 2005 JOB NO. 05-1008S SCALE: 1" = 30' FILE: PLAT_HOWARD ST