

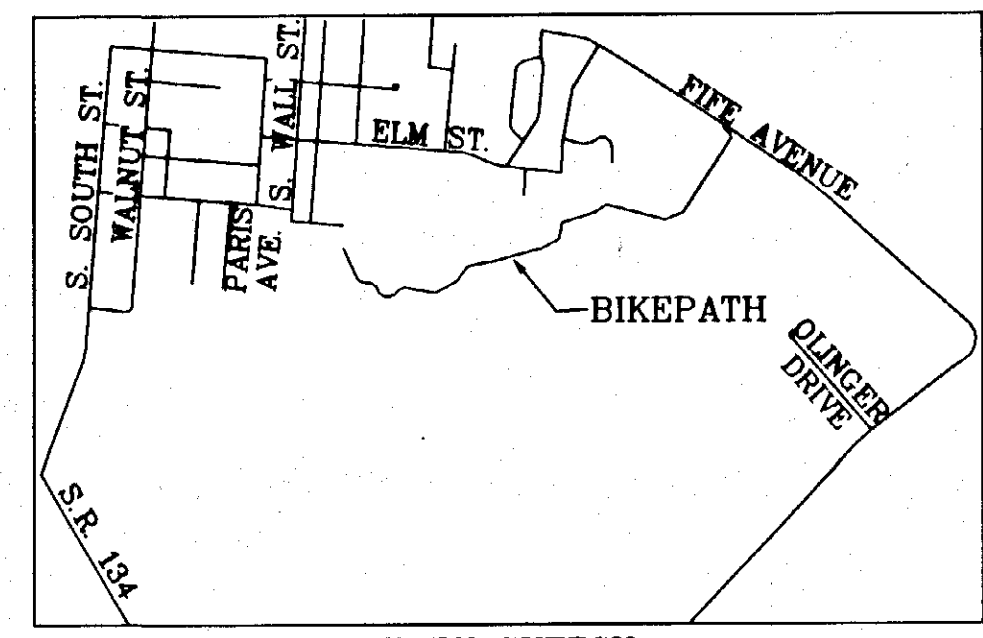
CLINTON COUNTY ENGINEERS
RECORD OF LAND DIVISION
VOLUME 39 PLAT NO. 21
DATE: 1-02-04
SCALE: 1" = 300'
TOWNSHIP CITY OF WILM. & UNION TWP.
MILITARY SURVEY NO. 2471 & 2693

DEED REFERENCES

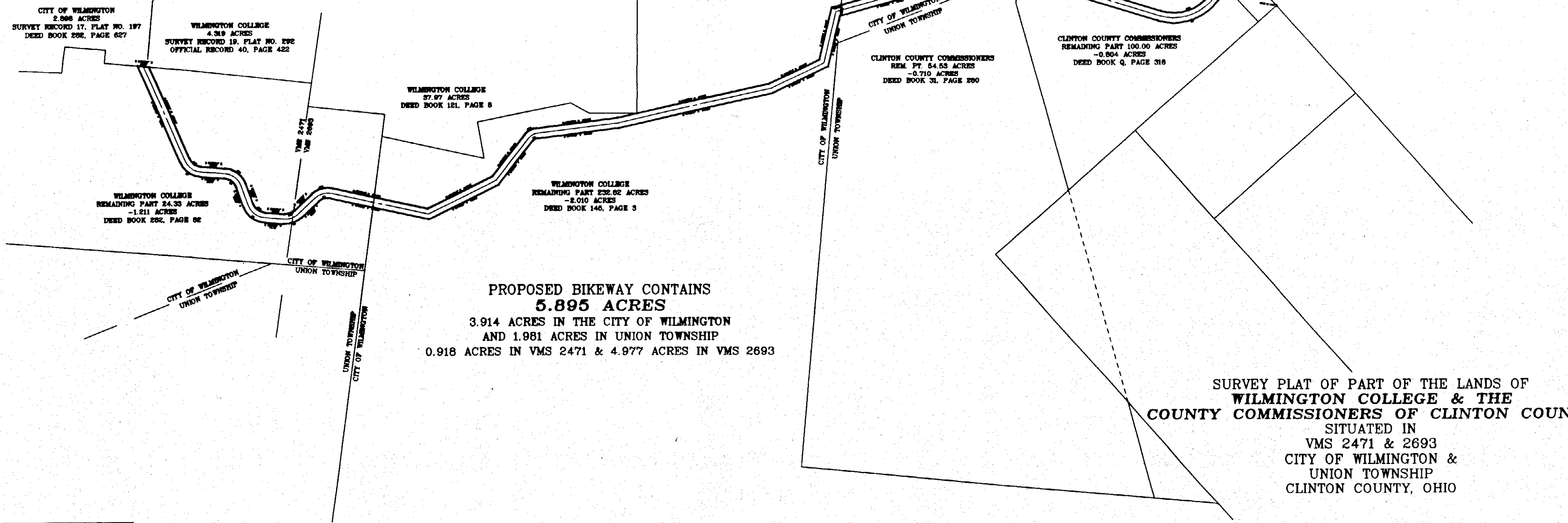
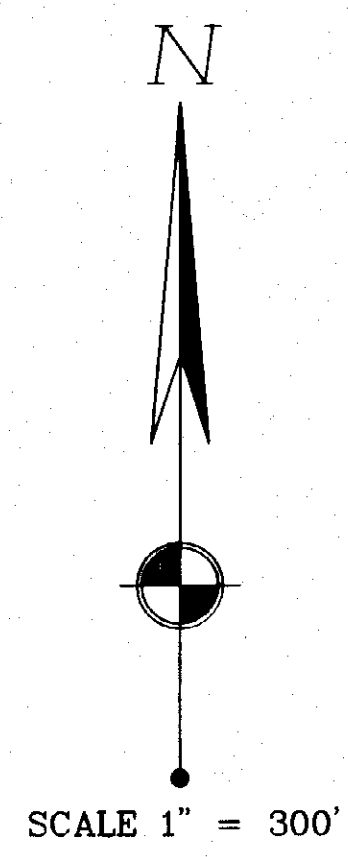
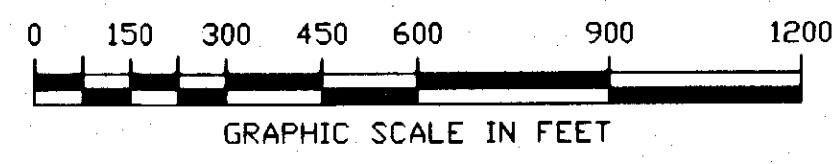
WILMINGTON COLLEGE
REM. PT. 24.33 AC. (DEED BOOK 282, PAGE 82)
REM. PT. 232.82 AC. (DEED BOOK 145, PAGE 3)
CLINTON COUNTY COMMISSIONERS
REM. PT. 54.53 AC. (DEED BOOK 31, PAGE 280)
REM. PT. 100.00 AC. (DEED BOOK Q, PAGE 316)
REM. PT. 50.00 AC. (DEED BOOK Z, PAGE 498)

ACREAGE BREAKDOWN

1.212 AC. FROM COLLEGE'S 24.33 AC.
2.010 AC. FROM COLLEGE'S 232.82 AC.
0.710 AC. FROM COUNTY'S 54.53 AC.
0.804 AC. FROM COUNTY'S 100.00 AC.
1.159 AC. FROM COUNTY'S 50.00 AC.



VICINITY SKETCH
NOT TO SCALE



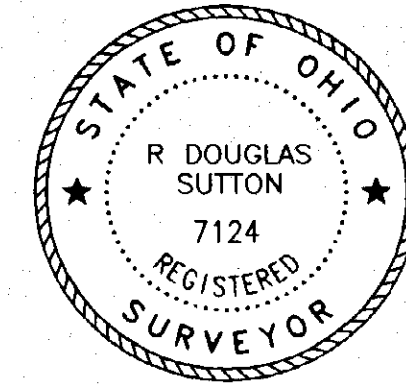
PROPOSED BIKEWAY CONTAINS
5.895 ACRES
3.914 ACRES IN THE CITY OF WILMINGTON
AND 1.981 ACRES IN UNION TOWNSHIP
0.918 ACRES IN VMS 2471 & 4.977 ACRES IN VMS 2693

SURVEY PLAT OF PART OF THE LANDS OF
**WILMINGTON COLLEGE & THE
COUNTY COMMISSIONERS OF CLINTON COUNTY**
SITUATED IN
VMS 2471 & 2693
CITY OF WILMINGTON &
UNION TOWNSHIP
CLINTON COUNTY, OHIO

- MONUMENT LEGEND**
- Iron Pin (fd) size per plan
 - 5/8" OD Iron Pin (set) with yellow plastic cap stamped: "CLINCO & SUTTON"
 - Iron Pipe (fd) OD size per plan
 - ⊠ Stone (fd)
 - ▲ Railroad Spike (fd)
 - △ Railroad Spike (set)
 - P.K. or Mag Nail (set)
 - ⊠ Concrete Monument (fd)
 - PK or Mag Nail (fd)
 - Bolt (fd) size per plan
 - ⊠ Post (fd) size per plan

NOTE: Bearings used are based on an assumed azimuth and are for purposes of angular measurement only. Monuments found or set are in good condition unless otherwise labeled. Deeds & Survey Records as noted on drawing are source data for this survey.

CURVE	RADIUS	ARC LENGTH	CHORD LENGTH	CHORD BEARING	DELTA ANGLE
C1	15.00'	23.58'	21.23'	S 12°25'52" E	90°03'50"
C2	55.00'	89.56'	79.99'	S 10°48'52" E	93°17'50"
C3	220.00'	273.44'	256.17'	S 71°26'26" W	71°12'47"
C4	30.00'	23.36'	22.77'	S 60°26'56" W	44°36'46"
C5	55.00'	53.61'	51.51'	S 74°29'17" W	55°50'51"
C6	95.00'	79.93'	77.60'	S 70°40'06" W	48°12'30"
C7	95.00'	107.69'	102.02'	N 52°45'07" W	64°57'04"
C8	55.00'	62.96'	59.58'	N 53°04'12" W	65°35'14"
C9	95.00'	103.79'	98.70'	N 54°33'58" W	62°35'43"
C10	55.00'	60.09'	57.14'	S 54°33'58" E	62°35'43"
C11	95.00'	108.75'	102.91'	S 53°04'12" E	65°35'14"
C12	55.00'	62.35'	59.06'	S 52°45'07" E	64°57'04"
C13	55.00'	46.28'	44.92'	N 70°40'06" E	48°12'30"
C14	95.00'	92.60'	88.98'	N 74°29'17" E	55°50'51"
C15	70.00'	54.50'	53.14'	N 60°26'56" E	44°36'46"
C16	180.00'	223.72'	209.60'	N 71°26'26" E	71°12'47"
C17	15.00'	24.43'	21.81'	N 10°48'52" W	93°17'50"
C18	55.00'	86.46'	77.83'	N 12°25'52" W	90°03'50"



APPROVED FOR
MATHEMATICAL ACCURACY
CLINTON COUNTY ENGINEER
Margaret Waters
1-02-04

R. Douglas Sutton
R. DOUGLAS SUTTON
OHIO PROFESSIONAL SURVEYOR NO. 7124

Clinco & Sutton
SURVEYORS
61 SOUTH MULBERRY ST.
WILMINGTON, OH 45177
JOB NO. 03336\03336
DRWG NO. PAGE 1
DATE: DECEMBER, 2003