

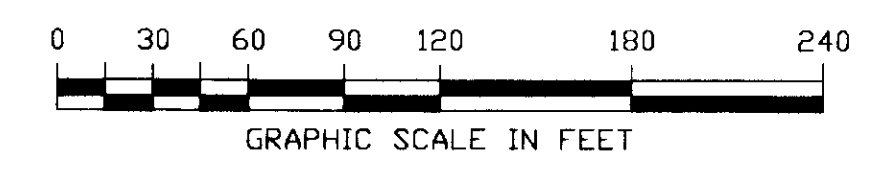
CLINTON COUNTY ENGINEERS
 RECORD OF LAND DIVISION
 VOLUME 34 PLAT NO. 15
 DATE: 1-02-2004
 SCALE: 1" = 60'

DEED REFERENCE
 VOLUME _____ PAGE _____
 TOWNSHIP CITY OF WILM. & UNION TWP.
 MILITARY SURVEY NO. 2471 & 2693

WILMINGTON COLLEGE
 40.349 ACRES
 SURVEY RECORD 20, PLAT NO. 174
 OFFICIAL RECORD 248, PAGE 340

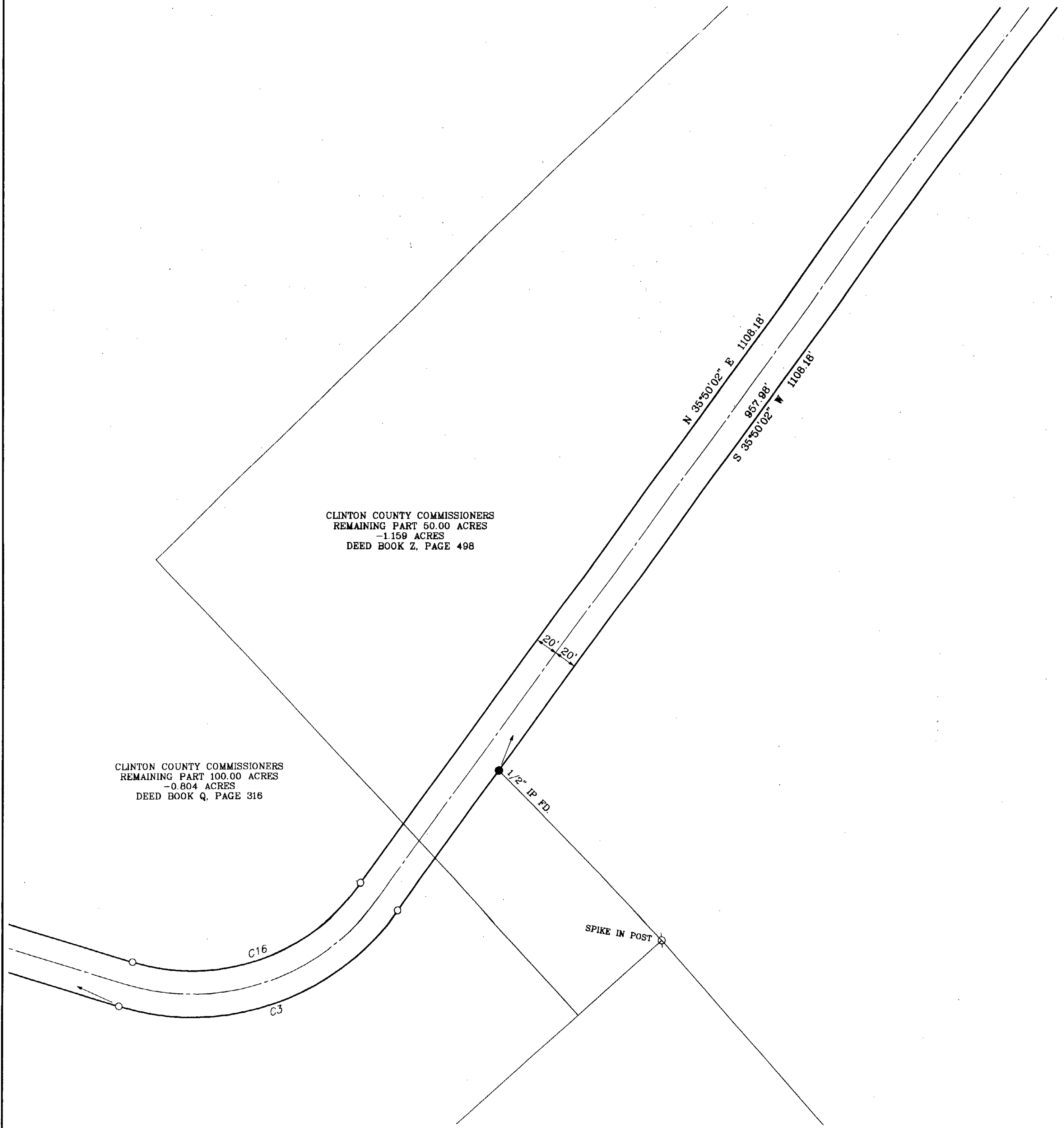


SCALE 1" = 60'



CLINTON COUNTY COMMISSIONERS
 REMAINING PART 50.00 ACRES
 -1.159 ACRES
 DEED BOOK Z, PAGE 498

CLINTON COUNTY COMMISSIONERS
 REMAINING PART 100.00 ACRES
 -0.804 ACRES
 DEED BOOK Q, PAGE 316



Clinco & Sutton
 SURVEYORS
 61 SOUTH MULBERRY ST.
 WILMINGTON, OH 45177

JOB NO. 2003/03336
 DRWG NO. PAGE 7
 DATE: DECEMBER, 2003