

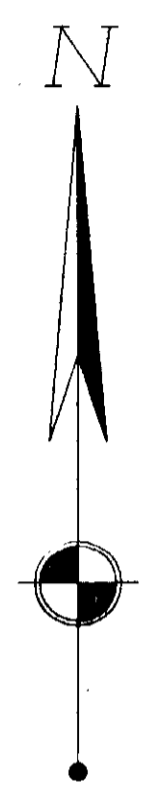
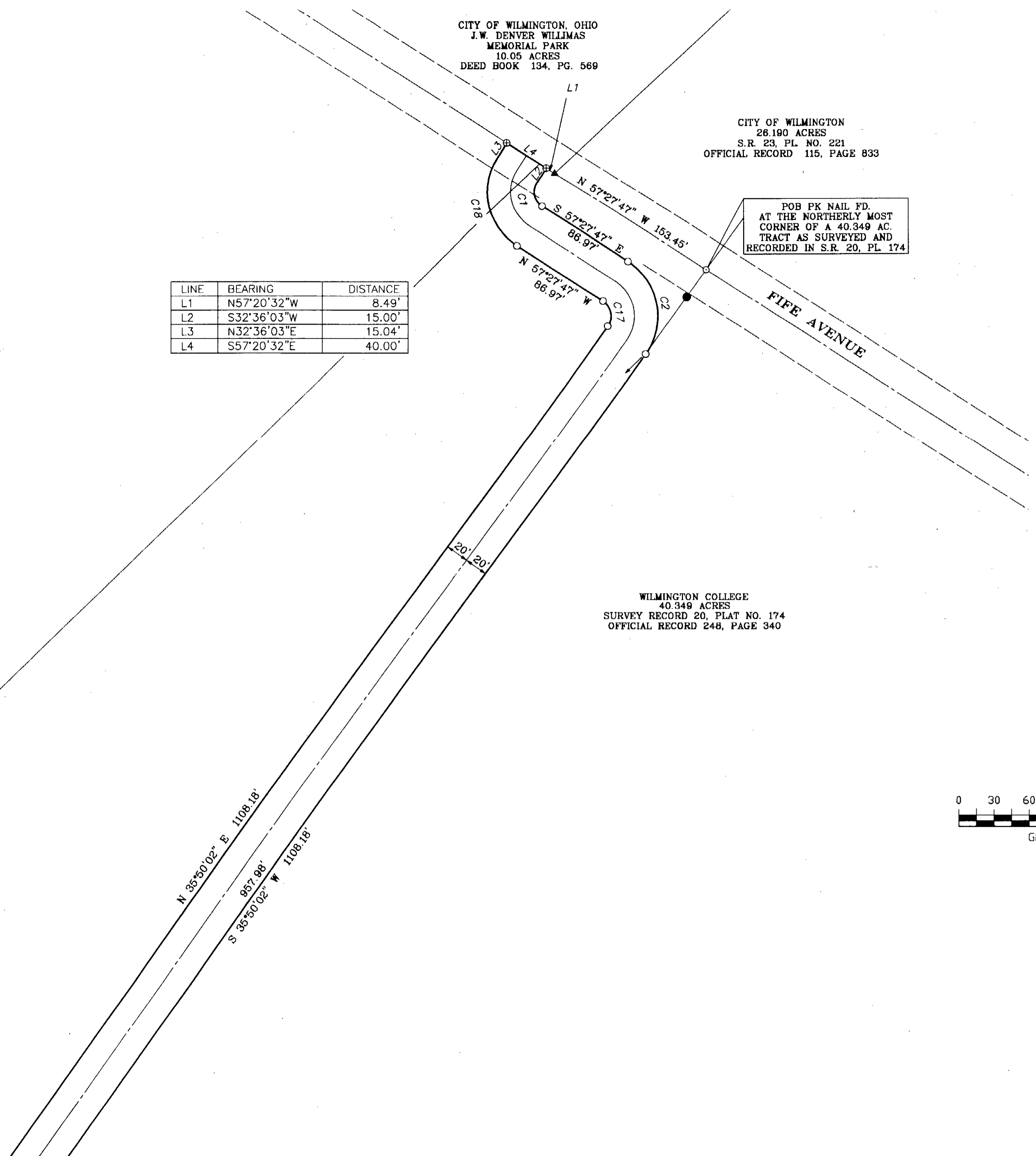
CLINTON COUNTY ENGINEERS  
 RECORD OF LAND DIVISION  
 VOLUME 34 PLAT NO. 14  
 DATE: 1-02-2004  
 SCALE: 1" = 60'  
 DEED REFERENCE  
 VOLUME \_\_\_\_\_ PAGE \_\_\_\_\_  
 TOWNSHIP CITY OF WILM. & UNION TWP.  
 MILITARY SURVEY NO. 2471 & 2693

CITY OF WILMINGTON, OHIO  
 J.W. DENVER WILLIAMS  
 MEMORIAL PARK  
 10.05 ACRES  
 DEED BOOK 134, PG. 569

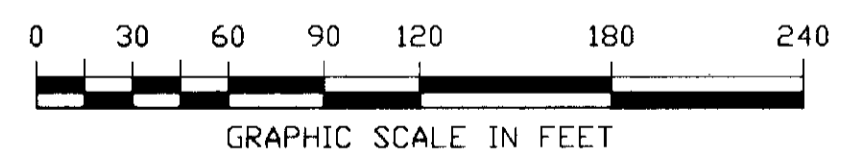
CITY OF WILMINGTON  
 28.190 ACRES  
 S.R. 23, PL. NO. 221  
 OFFICIAL RECORD 115, PAGE 833

POB PK NAIL FD.  
 AT THE NORTHERLY MOST  
 CORNER OF A 40.349 AC.  
 TRACT AS SURVEYED AND  
 RECORDED IN S.R. 20, PL 174

LINE	BEARING	DISTANCE
L1	N57°20'32"W	8.49'
L2	S32°36'03"W	15.00'
L3	N32°36'03"E	15.04'
L4	S57°20'32"E	40.00'



SCALE 1" = 60'



CLINTON COUNTY COMMISSIONERS  
 REMAINING PART 50.00 ACRES  
 -1.159 ACRES  
 DEED BOOK Z, PAGE 498

WILMINGTON COLLEGE  
 40.349 ACRES  
 SURVEY RECORD 20, PLAT NO. 174  
 OFFICIAL RECORD 248, PAGE 340

**Clinco & Sutton**  
 SURVEYORS  
 61 SOUTH MULBERRY ST.  
 WILMINGTON, OH 45177

JOB NO. 2003/03336  
 DRWG NO. PAGE 8  
 DATE: DECEMBER, 2003