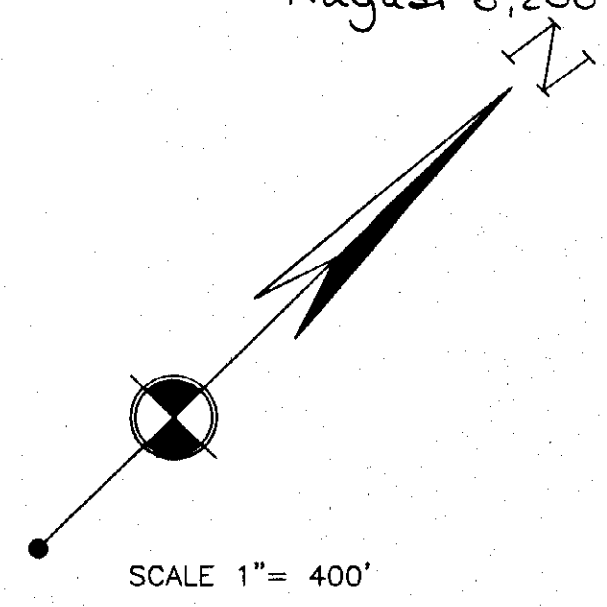
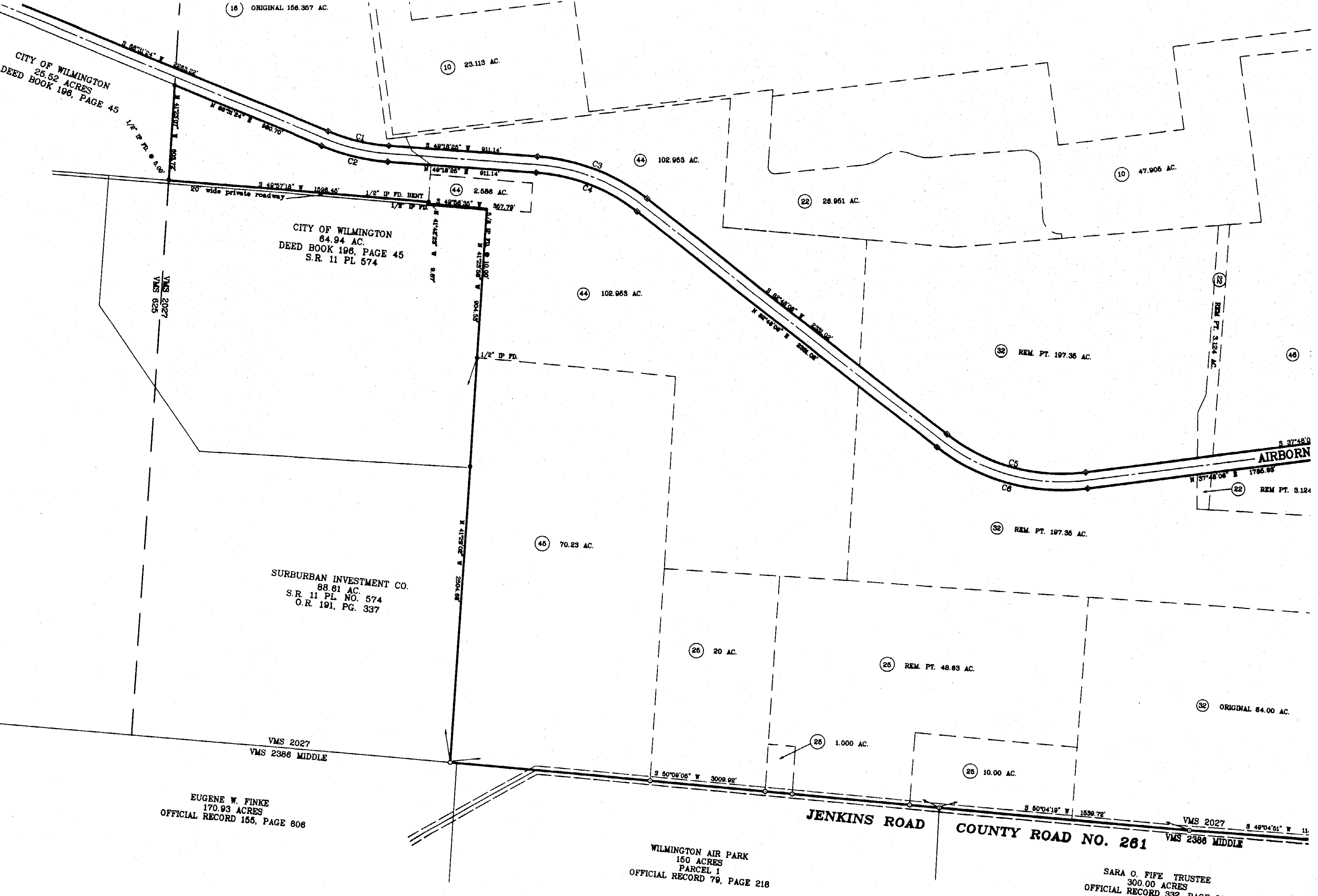


**SURVEY PLAT OF THE LANDS OF
WILMINGTON AIR PARK, INC.**
SITUATED IN VMS NUMBERS 625, 1162,
1170, 2027, 2890 & 2694
UNION TOWNSHIP, CLINTON COUNTY,
OHIO

SURVEYORS RECORD
Book 33, Page 207
August 8, 2003



CITY OF WILMINGTON
25.52 ACRES
DEED BOOK 198, PAGE 45
1/2" IP FD. 5.90'

20' wide private roadway

CITY OF WILMINGTON
84.94 AC.
DEED BOOK 198, PAGE 45
S.R. 11 PL. 574

SURBURBAN INVESTMENT CO.
88.81 AC.
S.R. 11 PL. NO. 574
O.R. 191, PG. 337

EUGENE W. FINKE
170.93 ACRES
OFFICIAL RECORD 155, PAGE 806

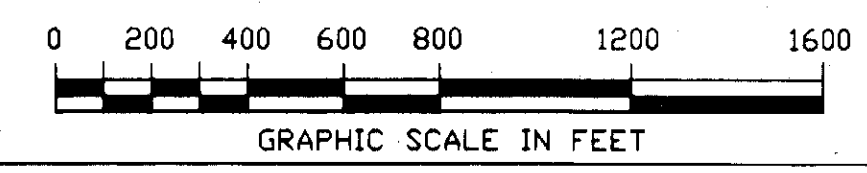
WILMINGTON AIR PARK
150 ACRES
PARCEL 1
OFFICIAL RECORD 79, PAGE 218

SARA O. FIFE TRUSTEE
300.00 ACRES
OFFICIAL RECORD 332, PAGE 860

IMPROVED FOR
MATHEMATICAL ACCURACY
CLINTON COUNTY ENGINEER
Melodee Hildebrandt
August 8, 2003

- MONUMENT LEGEND -
- Iron Pin (fd) size per plan
 - 5/8" OD Iron Pin (set) with yellow plastic cap stamped: "CLINCO & SUTTON"
 - ⊙ Iron Pipe (fd) OD size per plan
 - ⊠ Stone (fd)
 - ▲ Railroad Spike (fd)
 - △ Railroad Spike (set)
 - ⊗ P.K. or Mag Nail (set)
 - ⊞ Concrete Monument (fd)
 - ⊙ P.K. or Mag Nail (fd)
 - ◆ Bolt (fd) size per plan
 - ⊘ Post (fd) size per plan

NOTE: Bearings used are based on an assumed azimuth and are for purposes of angular measurement only. Monuments found or set are in good condition unless otherwise labeled. Deeds & Survey Records as noted on drawing are source data for this survey.



Clinco & Sutton
SURVEYORS
61 SOUTH MULBERRY ST.
WILMINGTON, OH 45177

JOB NUMBER 01074
SHEET 5 OF 7