

**Deed Reference:**

Situated in Military Survey 1096, Union Township, Clinton County, Ohio, containing 6.000 Acres and being part of the same tract as conveyed to Daniel Berger, Trustee and described in the deed recorded in Volume 378, Page 428 of the Clinton County Official Records.

**Owners Consent and Dedication:**

I, the undersigned, being the owner and lien holder of the lands herein platted, do hereby voluntarily consent to the execution of the said plat and do dedicate the easements, streets, parks or public grounds as shown hereon to the public use forever. The area designated as a "drainage easement" is for the construction of tiling to serve the lands abutting the easement.

*Daniel Berger, Trustee*  
Daniel Berger, Trustee

*Matt Williams*  
Witness

*Jessie Cook Tucker*  
Witness

State of Ohio, S.S.

Be it remembered that on this 15 day of AUGUST 2001, before me the undersigned, a Notary Public in and for said State, personally came Daniel Berger, Trustee, who acknowledged

In testimony whereof, I have set my hand and Notary Seal on the day and Date above written

*Walter Pull*

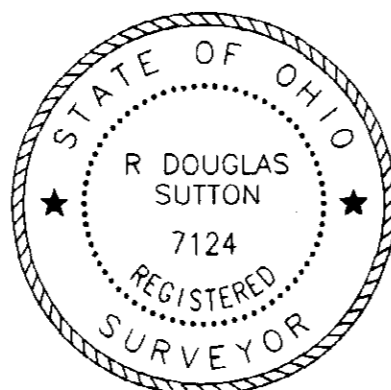
My commission expires 1-6-2002  
Notary Public  
State of Ohio

**Certificate of Surveyor:**

I hereby certify that this plat is a true and complete survey made under my supervision, in May, 2001 and that all monuments and lot corner pins are set as shown.

*R Douglas Sutton*

R. Douglas Sutton, Ohio Registered Surveyor No. 7124



**Regional Planning Commission Approval:**

This plat was approved by the Clinton County Regional Planning Commission on this 17 day of August, 2001.

*Paul Shultz*  
Executive Director

**Zoning Inspector Approval:**

I hereby approve this plat on this 22<sup>nd</sup> day of August, 2001.

*Glenn A. Sanders*  
Clinton County Zoning Inspector

**County Engineer:**

I hereby approve this plat on this 22<sup>nd</sup> day of August, 2001.

*William Temple, P.E., P.S.*  
Clinton County Engineer

**County Health District:**

I hereby approve this plat on this 22 day of August, 2001.

*Bob Derge*  
Clinton County Health Commissioner

**County Auditor:**

Transferred on this \_\_\_ day of \_\_\_, 2001.

by NA  
Deputy County Auditor

**County Recorder:**

File no. Received on this 23 day of Aug, 2001 at 11:45 A.M.

Recorded on this 23 day of Aug, 2001 at 11:45 A.M.

Recorded in Plat book No. 7, Page 22A.

Fee 20.00

By *Sandra K. Wolf*  
Deputy Clinton County Recorder

**Acceptance of Dedications:**

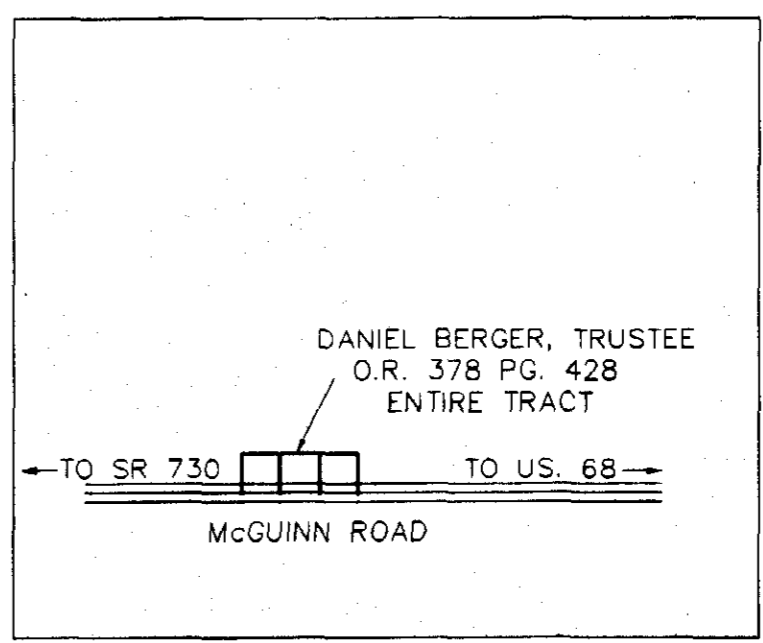
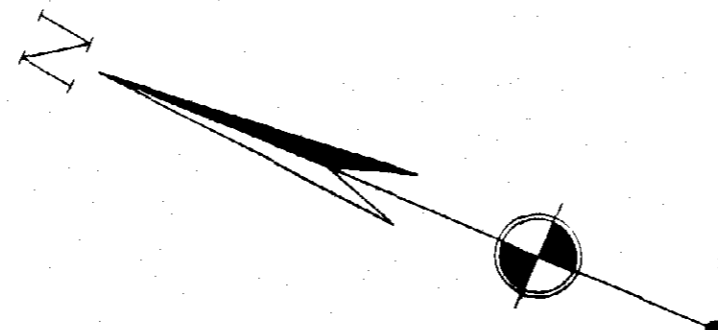
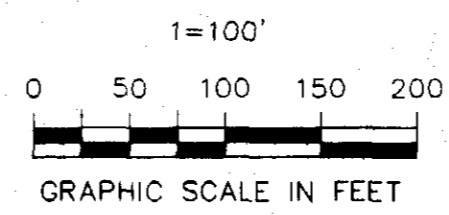
Be it resolved by the Board of County Commissioners, Clinton County, Ohio that the dedications shown on this plat are hereby approved and accepted this \_\_\_ Day of \_\_\_ 2001

*[Signature]*  
Board of County Commissioners

**Certificate of Ownership:**

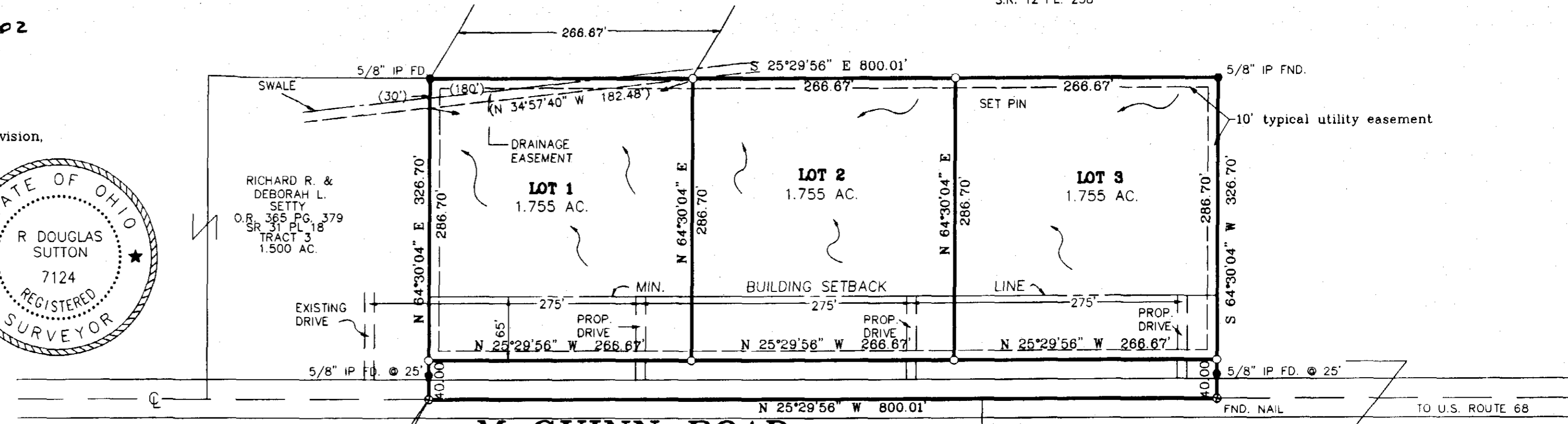
I, DANIEL BERGER, DO HEREBY CERTIFY THAT I AM THE TRUSTEE OF THE PROPERTY DESCRIBED AND SHOWN HEREIN AND THAT ALL LEGALLY DUE TAXES HAVE BEEN PAID, AND THAT AS SUCH TRUSTEE, I HAVE CAUSED THE SAID PROPERTY TO BE SURVEYED AND SUBDIVIDED AS SHOWN.

*Daniel Berger, Trustee*  
DANIEL BERGER, TRUSTEE



VICINITY SKETCH

LESLIE G. & HANNELORE BUCKLEY  
REMAINING PART 219.019 ACRES  
O.R. 47 PG. 378  
S.R. 12 PL. 258



POB  
N.W. CORNER  
6.000 AC. TR.  
S.R. 31 PL. 260

DONALD F. MUNZER  
O.R. 123 PG. 115  
S.R. 18 PL. 155  
46.703 AC.

LESLIE G. BUCKLEY  
O.R. 19 PG. 505  
S.R. 16 PL. 229  
68.430 AC.

Total Acreage = 6.000 Acres  
Total of Lots = 5.265 Acres  
Total Road R/W = 0.735 Acres

DEVELOPER:  
DANIEL BERGER, TRUSTEE  
2232 PHILLIPS ROAD  
LEBANON, OHIO 45036

APPROVED FOR  
MATHEMATICAL ACCURACY  
CLINTON COUNTY ENGINEER  
Per *Margaret Watters*  
8-22-2001

FINAL PLAT  
**BUCKLEY TRACE**  
SITUATED IN  
MILITARY SURVEY NO. 1096  
UNION TOWNSHIP  
CLINTON COUNTY, OHIO



61 SOUTH MULBERRY ST.  
WILMINGTON, OH 45177

JOB NO. 01-066  
DRWG NO. C-8977  
DATE: 6-20-01