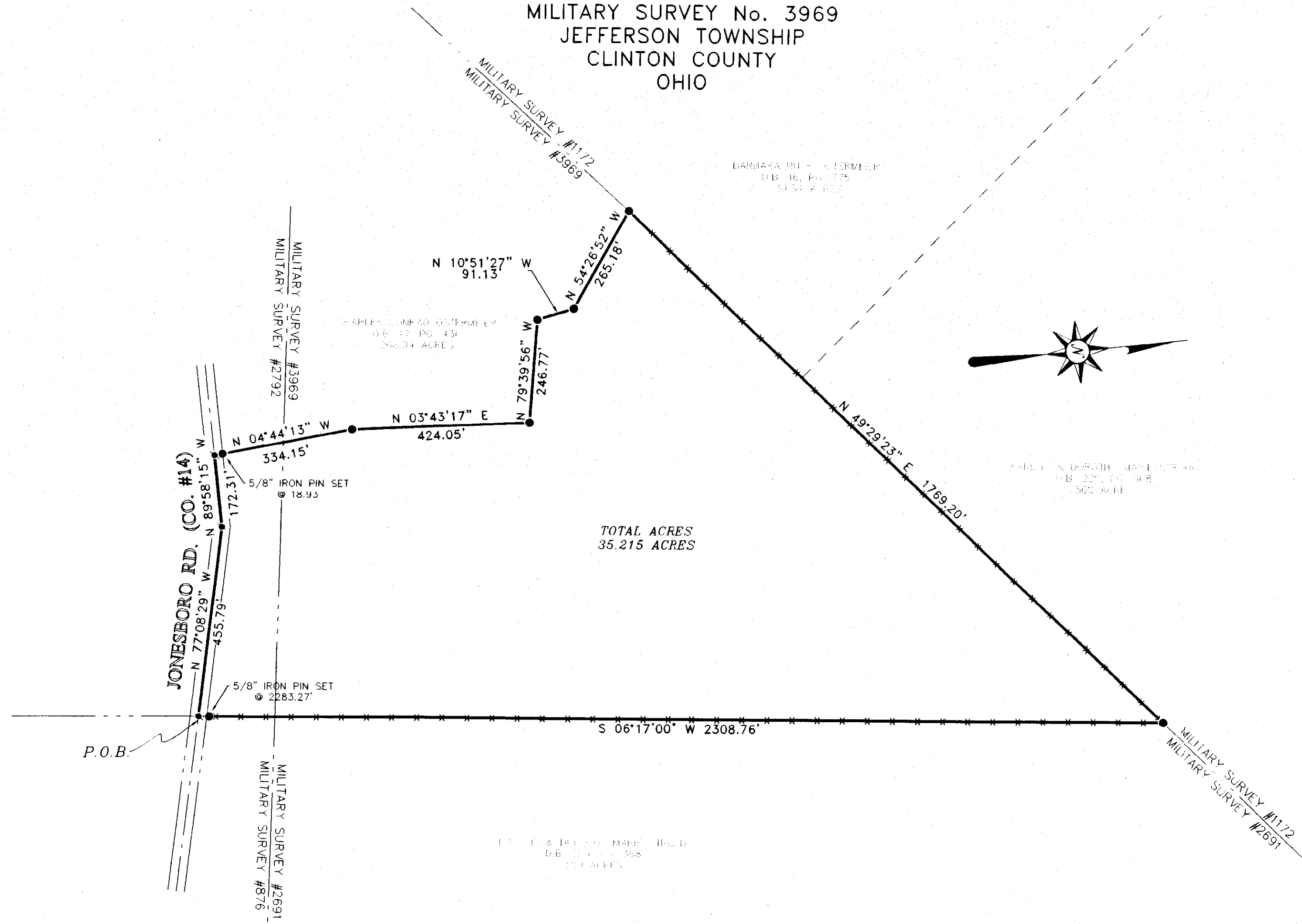


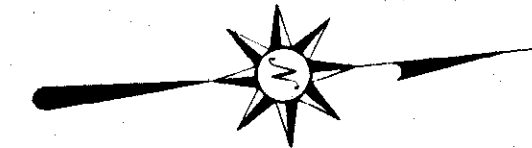
PLAT OF SURVEY

SITUATED IN
MILITARY SURVEY No. 3969
JEFFERSON TOWNSHIP
CLINTON COUNTY
OHIO

CLINTON COUNTY ENGINEERS
RECORD OF LAND DIVISION
VOLUME 32 PLAT NO. 249
DATE 9-12-02 SCALE 1" = 200'



TOTAL ACRES
35.215 ACRES



DEED REFERENCE
CHARLES CONRAD OSTERMEIER
O.R. 17 PG. 436

- LEGEND**
STANDARD SYMBOLS THAT MAY
APPEAR ON THIS DRAWING:
- IP SET - 5/8"
 - ⊙ IP SET - 1"
 - MAG NAIL SET


MATHEMATICAL ACCURACY
CLINTON COUNTY ENGINEER
Melvin Hildebrand
9-12-02



I HEREBY CERTIFY THIS TO BE A CORRECT PLAT OF A
SURVEY MADE UNDER MY DIRECTION IN DECEMBER, 2001.
Brian F. Gallagher
BRIAN GALLAGHER, PS 6945

NOTES:
BEARINGS WERE BASED ON THE S 06°17'00" W
OF THE 500 ACRES AS RECORDED IN
(D.B. 229, PAGE 368), OF THE CLINTON
COUNTY ENGINEERS RECORD OF LAND DIVISION.
DEED RECORDS AS SHOWN ON PLAT ARE
SOURCE DOCUMENT.
OCCUPATION IN GENERAL FITS SURVEY.
ALL MONUMENTS IN GOOD CONDITION.

0' 200' 400' 600'

PLAT OF SURVEY	
CHARLES OSTERMEIER JONESBORO ROAD MIDLAND, OHIO 45148	
 BLANKENSHIP & ASSOCIATES, INC. CIVIL ENGINEERS ~ LAND SURVEYORS 925 S. SOUTH STREET	DATE: DECEMBER 2001 JOB NO. 01-1435