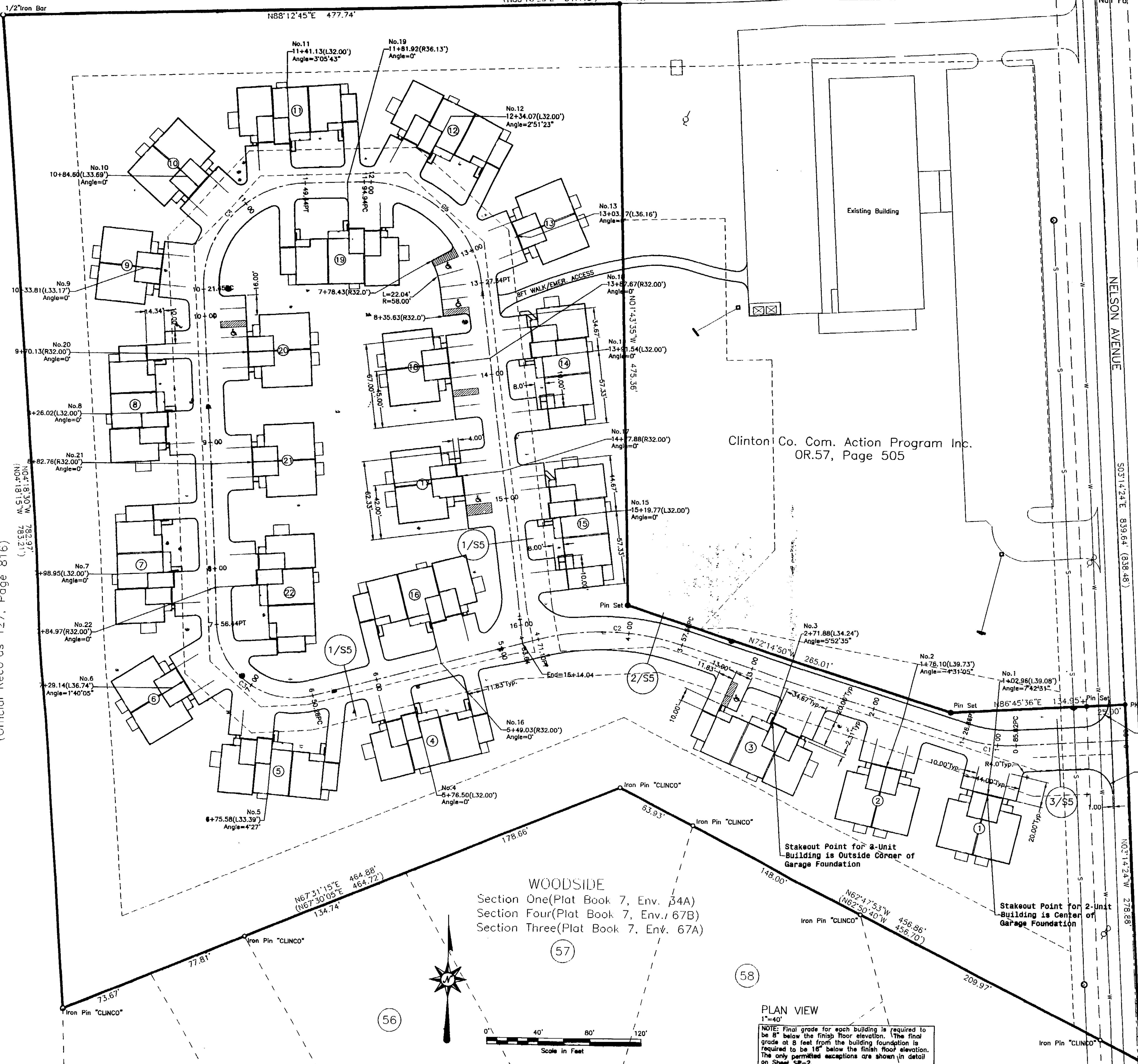


Donna South
(Deed Book 285, Page 205)

N88°12'45"E 477.74'
N88°16'25"E 847.48'
Pin Set



QUANTITIES:		Amount Unit		LEGEND	
Item	Description	Amount	Unit	Existing Topographic Line	Proposed Topographic Line
SANITARY SEWER				Spot Elevation	Water Line
603	8" PVC ASTM D 3034	1402	LF	Drainage Channel	Tree and Tree Line
603	8" PVC ASTM D 3034	1216	EA	Fossil Contourline	Property Line
604	Sanitary Manholes	8	EA	Work Limits	Right of Way
604	Outside Drop	1	EA	Easement	
STORM SEWER				UTILITY LINES	
603	8" AASHTO M 294 Pipe	95	LF	Sanitary Sewer	Storm Sewer
603	12" AASHTO M 294 Pipe	785	LF	Water Supply Line	Natural Gas Pipeline
603	15" AASHTO M 294 Pipe	370	LF	Underground Electric Line	Underground Telephone Cable
604	8" Flared Gulliet	2	EA	Other Underground Utility	Evg. Fence
604	Yard Drains	10	EA	Proposed Fence	
604	Catch Basins Type 2-2B	1	EA	STRUCTURES	
604	Catch Basins Type 2-3 (This has side inlets)	1	EA	Mannhole	Water Valve Box
604	Madwell Type HMD	2	EA	1" Corporate Stop	1.5" Corporate Stop
DOMESTIC WATER				6" Gate Valves	12x8 TAP
638	1" Water Line ANMA C 901 class 160	645	LF	6x8T	45" Elbow
638	1.5" Water Line ANMA C 901 Class 160	545	LF	638	11.25" Elbow
638	8" Water Line ANMA C 900 Class 160	1782	LF	Existing Monument	Proposed of New Monument
638	1" Corporate Stop	10	EA	Benchmark	
638	1.5" Corporate Stop	12	EA		
638	Fire Hydrants, 6x8T and 8" Gate Valve	4	EA		
638	8" Gate Valves	3	EA		
638	12x8 TAP	1	EA		
638	6x8T	6	EA		
638	45" Elbow	2	EA		
638	11.25" Elbow	1	EA		

RECEIVED FOR RECORD
Recorded: March 30, 1999
Book No. 7 Page: 81-B
99 Mar 30 PM 2:08
Fee: \$40.00
SANDRA K. WILT
Recorder
Clinton County, Ohio

NAME OF SUBDIVISION: Community Commons (No Section Reference)
These site plans are designed to be incorporated into the Architectural Plans as a sub-section of the plans.

UTILITIES
Underground utilities have been identified within the project site. The utilities have been located using surface features and maps from the utility companies. The location and depth of each utility will need to be verified during construction and layout.

The Contractor is solely responsible for contacting the Ohio Utilities Protection Service at (800)362-2764 at least two working days prior to performing any earth disturbing activities (Ohio Revised Code Sections 3781.25-.32)

The following utility companies and their representatives have been identified within the Project Area:

- City of Wilmington Municipal Building 56 West Locust Street Wilmington, Ohio 45177 740-382-6528
- GTE Wilmington, Ohio 45177 740-382-8961
- Dayton Power and Light 2415 East US 22 Wilmington, Ohio 45177 740-382-0911 1-937-548-2161
- City of Wilmington SANITARY SEWER WATER SERVICE
- GTE TELEPHONE
- Dayton Power and Light ELECTRICITY NATURAL GAS

OWNER: Community Commons Limited Partnership
C/LW and Associates
184 West Main Street
Ashville, Ohio 43103
(740)439-9344

ENGINEER: Casey C. Elliott, PE, PS
Conservation Technologies, Inc.
212 West High Street
London, Ohio 43140
(614)852-1300

PLANS: Ownership, Approval and Liability
The site plans and design information for this project are the property of the Engineer. Any change in the sealed plans without the approval of the Engineer will remove all liability for execution of this project from the Engineer. If the plans or the design are altered without the approval of the Engineer, no part of the plans will be considered sealed or approved by the Engineer.

These plans may not be used for any other Project at this site or any other site without the written consent of the Engineer.

The Engineer will incur no liability for these plans until the plans have been reviewed and approved by the reviewing agencies.

The CLIENT is permitted to retain a sealed set of the AS-BUILT site plans to be used for maintenance and repairs of the finished project. The plans will be labeled AS BUILT in red and will show all alterations made to the plans during construction.

SPECIFICATIONS:
Construction and Material Specifications reference the following:
State of Ohio, Department of Transportation, Construction and Material Specifications, January 1, 1997.
City of Wilmington Standard Plans and Specifications

Conflicts between the drawings and the construction and material specifications shall be resolved by the Architect. The order of precedence shall be:
The City of Wilmington Standard Plans and Specifications
The Construction Documents
The Plans
The ODOT Construction and Material Specifications, 1997

APPROVAL: City Engineer
[Signature]
Date: 8/2/98

An L.W. and Associates, Inc. Project
LAYOUT PLAN FOR
COMMUNITY COMMONS APARTMENTS
Prepared for Community Commons Ltd Partnership
Wilmington Clinton County, Ohio

Scale: 1"=40'
Date: July 1, 1998
Contract: 96130
Casey Elliott, PE
CONSERVATION TECHNOLOGIES, INC.
212 WEST HIGH STREET
LONDON, OHIO 43140
(614)852-1300
Approved: *[Signature]*
S1/5

PLAN VIEW
1"=40'
NOTE: Final grade for each building is required to be 8" below the finish floor elevation. The final grade at 8 feet from the building foundation is required to be 15" below the finish floor elevation. The only permitted exceptions are shown in detail on Sheet SP-2.

Cape May Retirement Village Inc.
(Official Records 127, Page 816)

