

WABNITZ CONSTRUCTION, INC
O R 231 PG 281
S R 28 PL 40
23 786 AC

JOSEPHINE B SILER ET AL
O R 222 PG 632

ACREAGE TABLE	
LOTS	9 730
R/W	1 994
TOTAL	11 724

CURVE TABLE				
CURVE	RADIUS	ARC LENGTH	CHORD LEN	CHORD BEARING
C1	100.00	66.75'	65.52'	N 31 30 36" E
C2	25.00	39.27'	35.36'	N 57 23 11" E
C3	125.00'	44.33'	44.10'	N 22 32 47" E
C4	125.00'	39.11'	38.95'	N 41 40 12" E
C5	25.00'	22.39'	21.65'	N 24 58 28" E
C6	55.00'	50.25'	48.23'	N 25 29 45" E
C7	55.00'	49.24'	47.61'	N 77 19 24" E
C8	55.00'	85.32'	77.02'	N 32 35 18" W
C9	25.00'	39.23'	35.33'	S 84 24 56" E
C10	75.00'	50.07'	49.14'	N 31 30 36" E
C11	25.00'	39.27'	35.36'	N 32 36 49" W

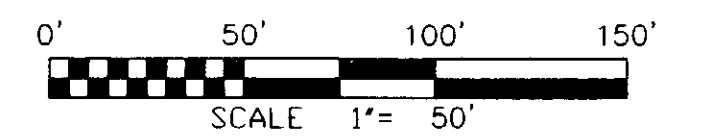
LINE TABLE		
LINE	BEARING	DISTANCE
L1	N 47 58 58" W	176.09
L2	S 77 36 49" E	190.18
L3	S 47 58 58" E	192.29
L4	N 47 29 59" E	70.87

DRAINAGE STATEMENT

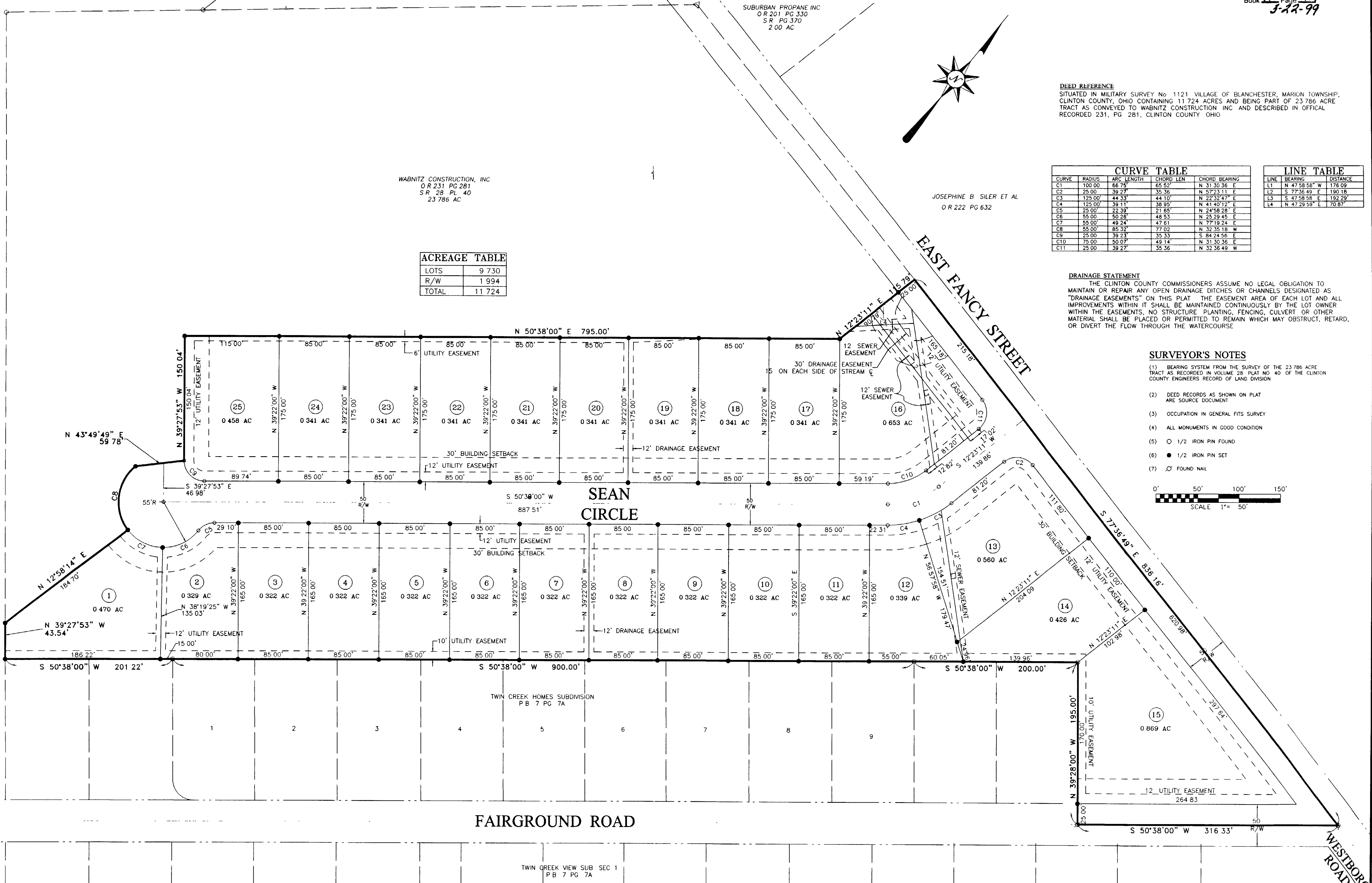
THE CLINTON COUNTY COMMISSIONERS ASSUME NO LEGAL OBLIGATION TO MAINTAIN OR REPAIR ANY OPEN DRAINAGE DITCHES OR CHANNELS DESIGNATED AS "DRAINAGE EASEMENTS" ON THIS PLAT. THE EASEMENT AREA OF EACH LOT AND ALL IMPROVEMENTS WITHIN IT SHALL BE MAINTAINED CONTINUOUSLY BY THE LOT OWNER WITHIN THE EASEMENTS, NO STRUCTURE PLANTING, FENCING, CULVERT OR OTHER MATERIAL SHALL BE PLACED OR PERMITTED TO REMAIN WHICH MAY OBSTRUCT, RETARD, OR DIVERT THE FLOW THROUGH THE WATERCOURSE.

SURVEYOR'S NOTES

- BEARING SYSTEM FROM THE SURVEY OF THE 23 786 ACRE TRACT AS RECORDED IN VOLUME 28 PLAT NO. 43 OF THE CLINTON COUNTY ENGINEERS RECORD OF LAND DIVISION.
- DEED RECORDS AS SHOWN ON PLAT ARE SOURCE DOCUMENT.
- OCCUPATION IN GENERAL FITS SURVEY.
- ALL MONUMENTS IN GOOD CONDITION.
- 1/2 IRON PIN FOUND
- 1/2 IRON PIN SET
- ⊙ FOUND NAIL



VILLAGE OF BLANCHESTER, OHIO
RESERVOIR SITE
D B 138 PG 124



FAIRGROUND ROAD

TWIN CREEK VIEW SUB SEC 1
P B 7 PG 7A

WESTBORO ROAD