

0 60 120  
SCALE: 1"=60'

BEARINGS ARE MAGNETIC  
AND BASED UPON THE  
575.11' 25" W LINE  
IN O.R. 174 P. 43.  
SOURCE OF DOCUMENTS  
ARE DEED RECORDS AS  
SHOWN ON PLAT.

VOLUME 29 PLATNO. 209  
CLINTON COUNTY ENGINEERS  
RECORD OF LAND SURVEYS  
DATE: 11/11/98  
SCALE: 1"=60'  
DEED REFERENCE  
O.R. 174 P. 43  
(ORIG. 0.919 AC.)  
S.R. 15 P. 197

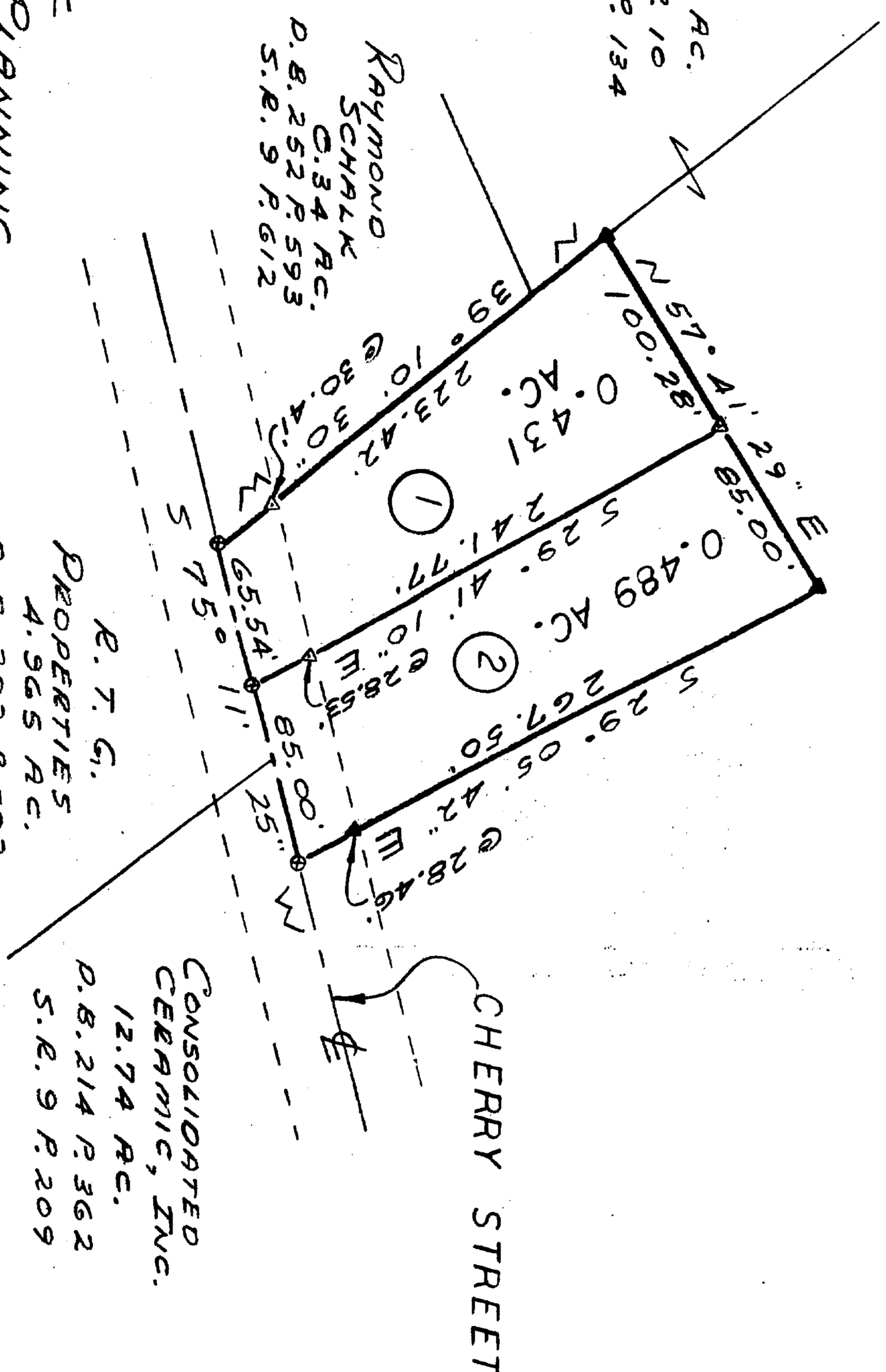
D. S. V. PROPERTIES  
2.023 AC.  
O.R. 251 P. 10  
S.R. 15 P. 197

1.344 AC.  
O.R. 251 P. 10  
S.R. 15 P. 134

RAYMOND  
SCHALK  
0.34 AC.  
D.B. 252 P. 593  
S.R. 9 P. 612

R. T. G.  
PROPERTIES  
4.965 AC.  
O.B. 282 P. 583  
S.R. 11 P. 598

CONSOLIDATED  
CERAMIC, INC.  
12.74 AC.  
D.B. 214 P. 362  
S.R. 9 P. 209



NOTE:  
FLOOD ZONE X 500 YEAR FLOOD PLAIN  
AUGUST 5, 1991  
PANEL NO. 3900740001B

APPROVAL  
BRANCHESTER PLANNING  
COMMISSION  
Nov. 14, 1998  
DATE  
Director

SURVEY BY  
SATTERFIELD ASSOCIATES  
Robert E. Satterfield  
ROBERT E. SATTERFIELD  
111 E. MAIN ST.  
WEST UNION, OHIO 45693  
P.S. NO. 4238  
937-544-2833



LEGEND  
● 1/4" SPIKE SET  
▼ 5/8" IRON PIN SET  
▲ 5/8" IRON PIN FOUND  
(ALL IN GOOD CONDITION)

APPROVED FOR  
MATHEMATICAL ACCURACY  
CLINTON COUNTY ENGINEER  
Per: WALL

SURVEY  
FOR  
RODNEY A. & BRONWYN  
WETENKAMP

V. M. S. NO. 1121  
VILLAGE OF BRANCHESTER  
MARION TOWNSHIP  
CLINTON COUNTY OHIO  
SCALE 1"=60' OCTOBER 14, 1998