

BEARINGS ARE MAGNETIC AND BASED UPON THE  $548^{\circ}42'12''$  W LINE IN S. R. 19 P. 168.

SOURCE OF DOCUMENTS ARE DEED RECORDS AS SHOWN ON PLAT.

0 200 400  
SCALE: 1"=200'

STATE ROUTE NO. 729

CLINTON COUNTY ENGINEERS  
RECORD OF LAND SURVEYS  
VOLUME 28 PLAT NO. 239

DATE: 3-3-98  
SCALE: 1"=200'

DEED REFERENCE  
DEED BOOK 207 PAGE 173  
(ORIG. 121.57 AC.)  
S. R. B P. 441

NOTE:  
ZONE C  
COMMUNITY PANEL NO.  
390764 0005 B  
SEPT. 16, 1998

HOWARD & SARAH FISHER  
49.25 AC.  
O.R. 46 P. 331  
S.R. 9 P. 174

ACCESS EASEMENT  
D.B. 172 P. 205  
S.R. 16 P. 189  
O. 427 AC.

HELEN ROUSH  
40.00 AC.  
S.R. 19 P. 80  
O. R. 176 P. 858

OTTO RÜDIGER ET AL.  
30.00 AC.  
S. R. 19 P. 60

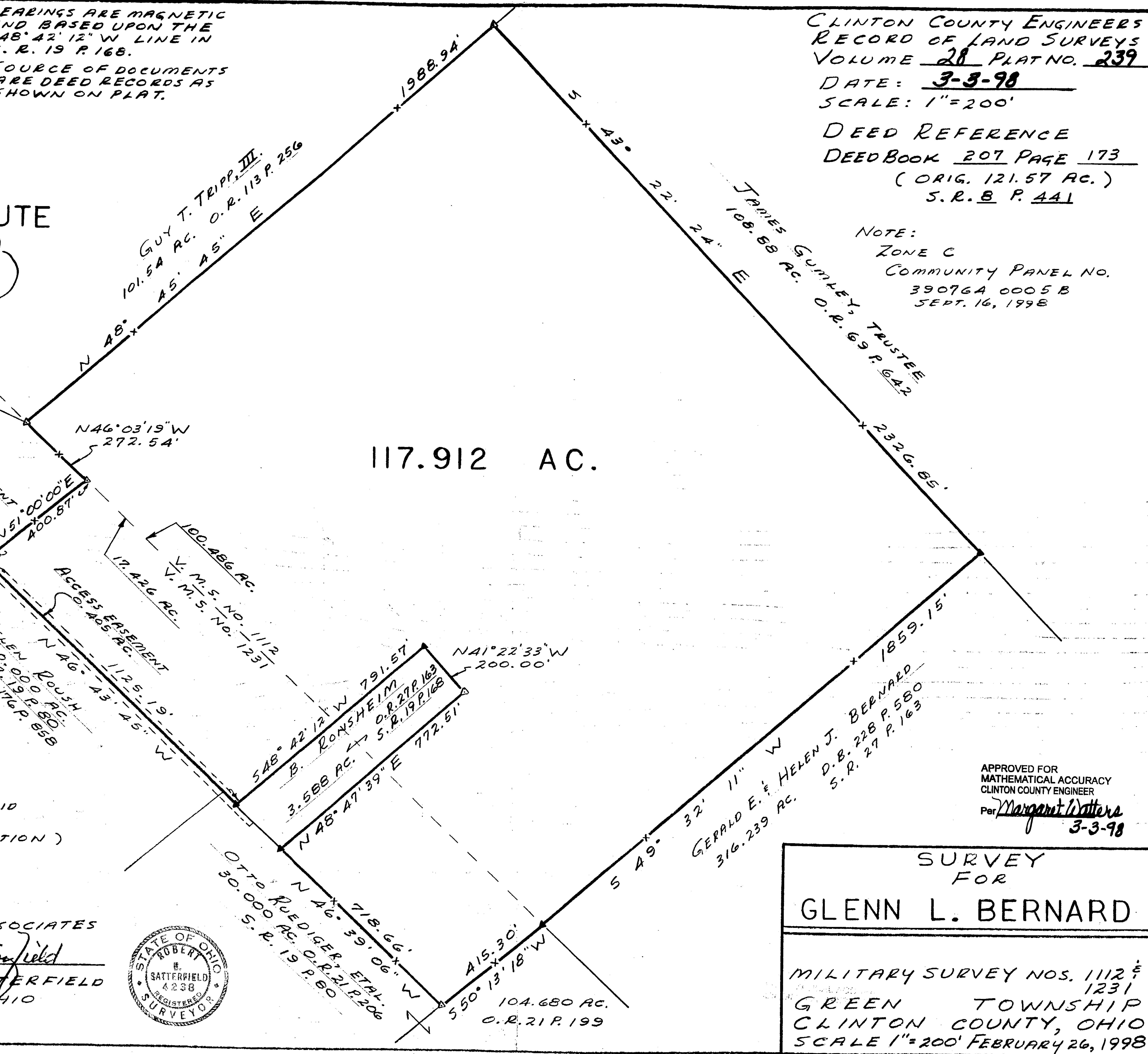
B. RONSHEIM  
3.588 AC.  
O.R. 27 P. 163  
S.R. 19 P. 168

GERALD E. & HELEN J. BERNARD  
316.239 AC.  
D.B. 228 P. 580  
S.R. 27 P. 163

GUY T. TRIPP, III.  
101.54 AC.  
O.R. 113 P. 256

JAMES GURLEY, TRUSTEE  
108.88 AC.  
O.R. 69 P. 642

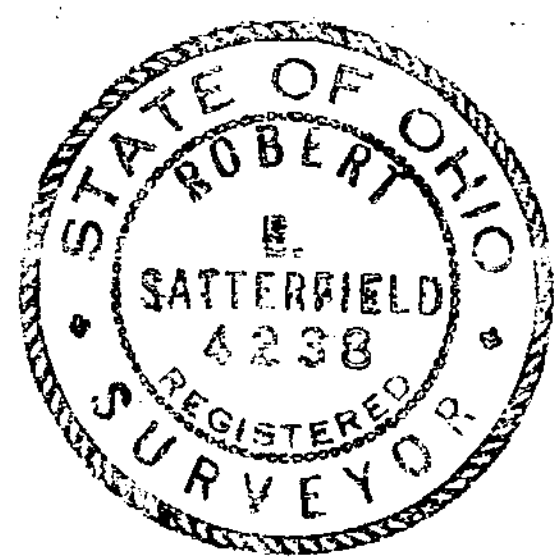
104.680 AC.  
O.R. 21 P. 199



117.912 AC.

LEGEND  
⊙ 1/4" SPIKE SET  
▽ 5/8" IRON PIN SET  
▼ 1/2" IRON PIN FOUND  
-x- FENCE  
(ALL IN GOOD CONDITION)

SURVEY BY  
SATTERFIELD & ASSOCIATES  
*Robert E. Satterfield*  
ROBERT E. SATTERFIELD  
WEST UNION, OHIO  
P. S. NO. 4238  
937-544-2833



APPROVED FOR  
MATHEMATICAL ACCURACY  
CLINTON COUNTY ENGINEER  
Per *Margaret Waters*  
3-3-98

SURVEY FOR  
GLENN L. BERNARD  
MILITARY SURVEY NOS. 1112 & 1231  
GREEN TOWNSHIP  
CLINTON COUNTY, OHIO  
SCALE 1"=200' FEBRUARY 26, 1998