

APPROVALS:

APPROVED THIS 30 DAY
OF August 1995.

[Signature]
[Signature]
COMMISSIONERS OF CLINTON COUNTY

This land split is conditionally approved for land transfer.
Split approval does NOT constitute approval for a building
permit and/or Health Department regulations.

The approval of this plat by the Board
of County Commissioners does not
constitute the approval by the Board
of Health, roads or streets, zoning and the
drainage of this subdivision.

PLAT OF SURVEY FOR
E. STEPHEN CONNER, et al.
SITUATED IN
MILITARY SURVEY No. 793
VERNON TOWNSHIP
CLINTON COUNTY, OHIO

S.E. BLONG
158 ACRES
D.B. VOL. 236, PG. 182

O.D.N.R.
16.16 ACRES
D.B. VOL. 263, PG. 506
S.R. VOL. 15, PL. 126

J.E. & M.E. STURGIS
225.398 ACRES
O.R. VOL. 92, PG. 391
S.R. VOL. 22, PG. 201

J.G. & J.M. KISLING
5.010 ACRES
O.R. VOL. 153, PG. 609
S.R. VOL. 24, PL. 299

G.K. & D.A. MILLER
7.362 ACRES
O.R. VOL. 149, PG. 546
S.R. VOL. 24, PL. 299

B. & D.J. FLOREA
6.880 ACRES
O.R. VOL. 176, PG. 325
S.R. VOL. 24, PL. 299

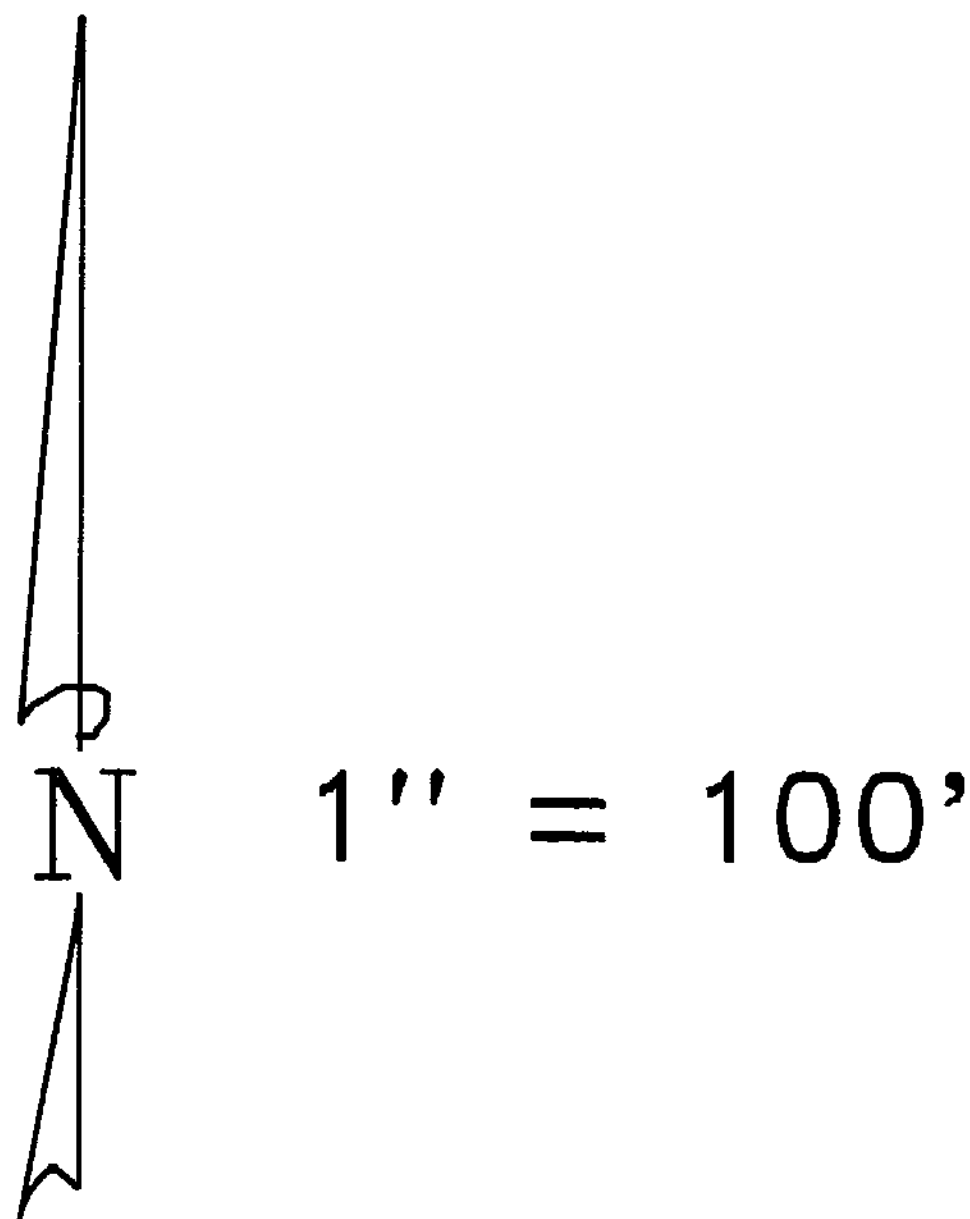
2.000 ACRES

3.562 ACRES

STATE
ROUTE
No.
730

E. STEPHEN CONNER, et al.
5.562 ACRES
O.R. VOL. 179, PG. 30
S.R. VOL. 26, PL. 73

E. STEPHEN CONNER, et al.
5.020 ACRES
O.R. VOL. 179, PG. 30
S.R. VOL. 26, PG. 73



BEARINGS ARE BASED UPON THE PLAT OF
SURVEY FILED IN VOLUME 26, PLAT 73 OF
THE CLINTON COUNTY ENGINEER'S RECORD
OF LAND DIVISION.

APPROVED BY *[Signature]*
DATE 8/29/95
CLINTON COUNTY HEALTH DEPARTMENT

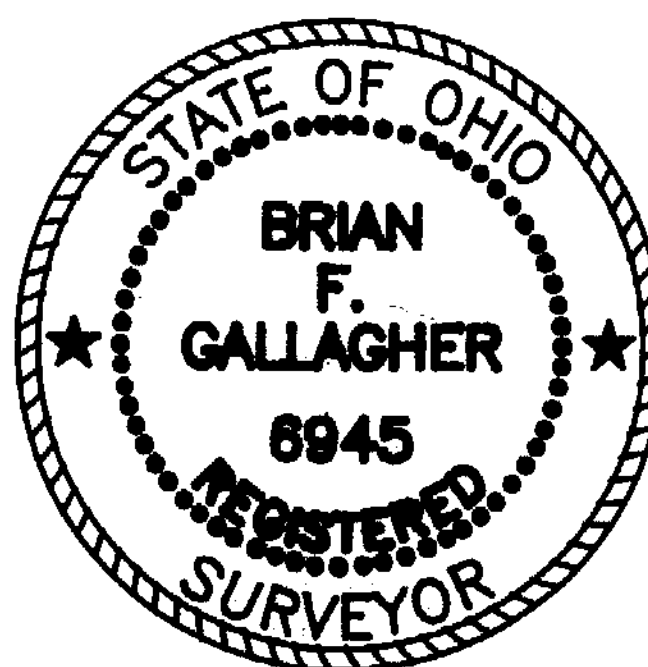
APPROVED FOR
MATH. ACCURACY
[Signature]
DATE 8-29-95

LEGEND

- ⊙ P.K. MASONRY NAIL (FOUND)
- △ RAILROAD SPIKE (FOUND)
- 5/8" IRON PIN (FOUND) ~ UNLESS OTHERWISE DENOTED
- 5/8" IRON PIPE (FOUND) ~ UNLESS OTHERWISE DENOTED
- ⊙ HEX BOLT (FOUND)
- ⊙ P.K. MASONRY NAIL (SET)
- NO MONUMENT SET AT CORNER
- 5/8" IRON PIN (SET) W/PLASTIC I.D. CAP
- X- WOVEN WIRE FENCE ON OR NEAR PROPERTY LINE
- - - NO EVIDENCE OF OCCUPATION ALONG PROPERTY LINE
- TOWNSHIP LINE MONUMENT

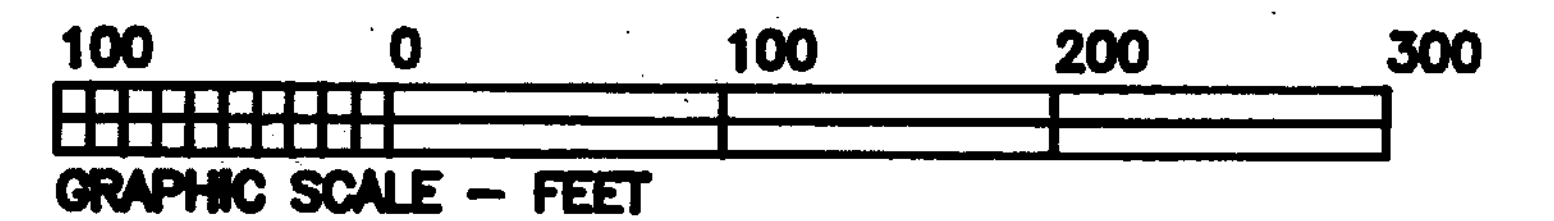
NOTES:

- (1) SOURCE DOCUMENTS: DEED REFERENCES & SURVEYS AS SHOWN
- (2) MONUMENTS FOUND IN GOOD CONDITION AT TIME OF SURVEY



[Signature]
BRIAN F. GALLAGHER, OHIO P. S. 6945

APPROVED FOR
MATH. ACCURACY
Clinton County Engineer
Per *[Signature]*
AUG 29 1995



SOUTHWEST OHIO LAND SURVEYS
P.O. BOX 201, WILMINGTON, OHIO 45177
(513)-382-0799

DATE: AUGUST 7, 1995	CAD. NO. TUCKER22	FILE NO. 93-83
REVISIONS:		
SCALE: 1" = 100'	DRAWN BY: DJB	DRWG. NO. 18241766