

Curve Data
RAD = 2018.82' A = 482.86'
CH = N 44° 39' 04" E 481.71' T = 242.59'

NOTE: ▽ DENOTES 8" (DIAMETER) x 42" CONCRETE MONUMENT SET.

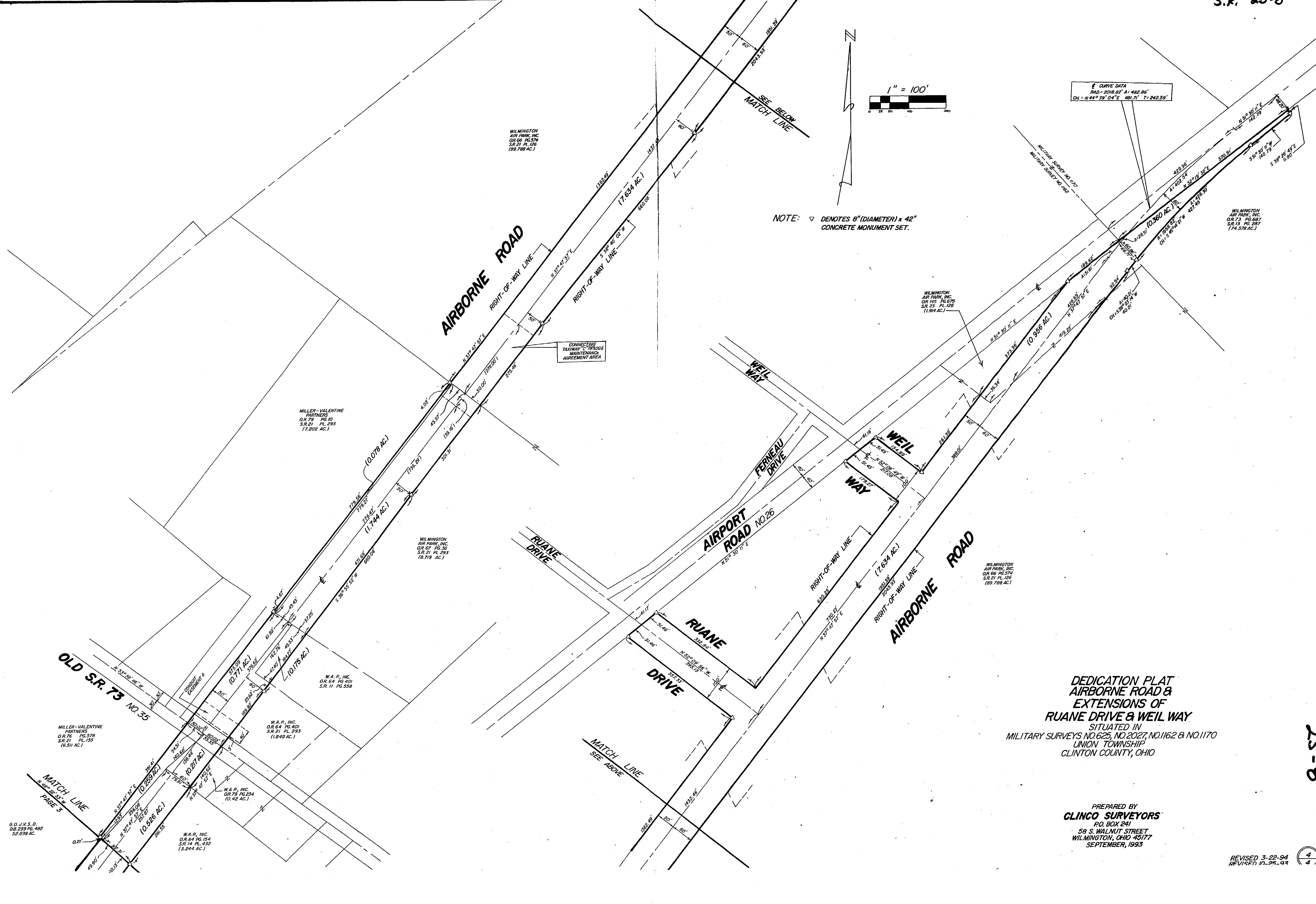
AIRBORNE ROAD
RIGHT-OF-WAY LINE
RIGHT-OF-WAY LINE

AIRPORT ROAD NO. 26
RIGHT-OF-WAY LINE

AIRBORNE ROAD
RIGHT-OF-WAY LINE

DEDICATION PLAT
AIRBORNE ROAD &
EXTENSIONS OF
RUANE DRIVE & WEIL WAY
SITUATED IN
MILITARY SURVEYS NO. 625, NO. 2027, NO. 1162 & NO. 1170
UNION TOWNSHIP
CLINTON COUNTY, OHIO

PREPARED BY
CLINCO SURVEYORS
P.O. BOX 241
58 S. WALNUT STREET
WILMINGTON, OHIO 45177
SEPTEMBER, 1993



G.O. J.V.S.D.
D.B. 239 PG. 482
52.038 AC.

MILLER-VALENTINE PARTNERS
O.R. 76 PG. 578
S.R. 21 PL. 155
(6.31 AC.)

W.A.P., INC.
O.R. 64 PG. 401
S.R. 21 PL. 293
(1.849 AC.)

W.A.P., INC.
O.R. 64 PG. 154
S.R. 14 PL. 432
(3.244 AC.)

WILMINGTON AIR PARK, INC.
O.R. 57 PG. 36
S.R. 21 PL. 293
(8.719 AC.)

MILLER-VALENTINE PARTNERS
O.R. 79 PG. 10
S.R. 21 PL. 293
(7.202 AC.)

WILMINGTON AIR PARK, INC.
O.R. 65 PG. 574
S.R. 21 PL. 126
(89.788 AC.)

WILMINGTON AIR PARK, INC.
O.R. 73 PG. 687
S.R. 13 PG. 287
(74.578 AC.)

WILMINGTON AIR PARK, INC.
O.R. 145 PG. 675
S.R. 23 PL. 126
(1.914 AC.)

WILMINGTON AIR PARK, INC.
O.R. 66 PG. 6575
S.R. 21 PL. 126
(89.788 AC.)

OLD SR. 73 NO. 35
MATCH LINE
PAGE 3

MATCH LINE
SEE ABOVE

SEE BELOW
MATCH LINE

CONNECTING TAXIWAY "C" BRIDGE MAINTENANCE AGREEMENT AREA