

0 100 200
SCALE: 1" = 100'

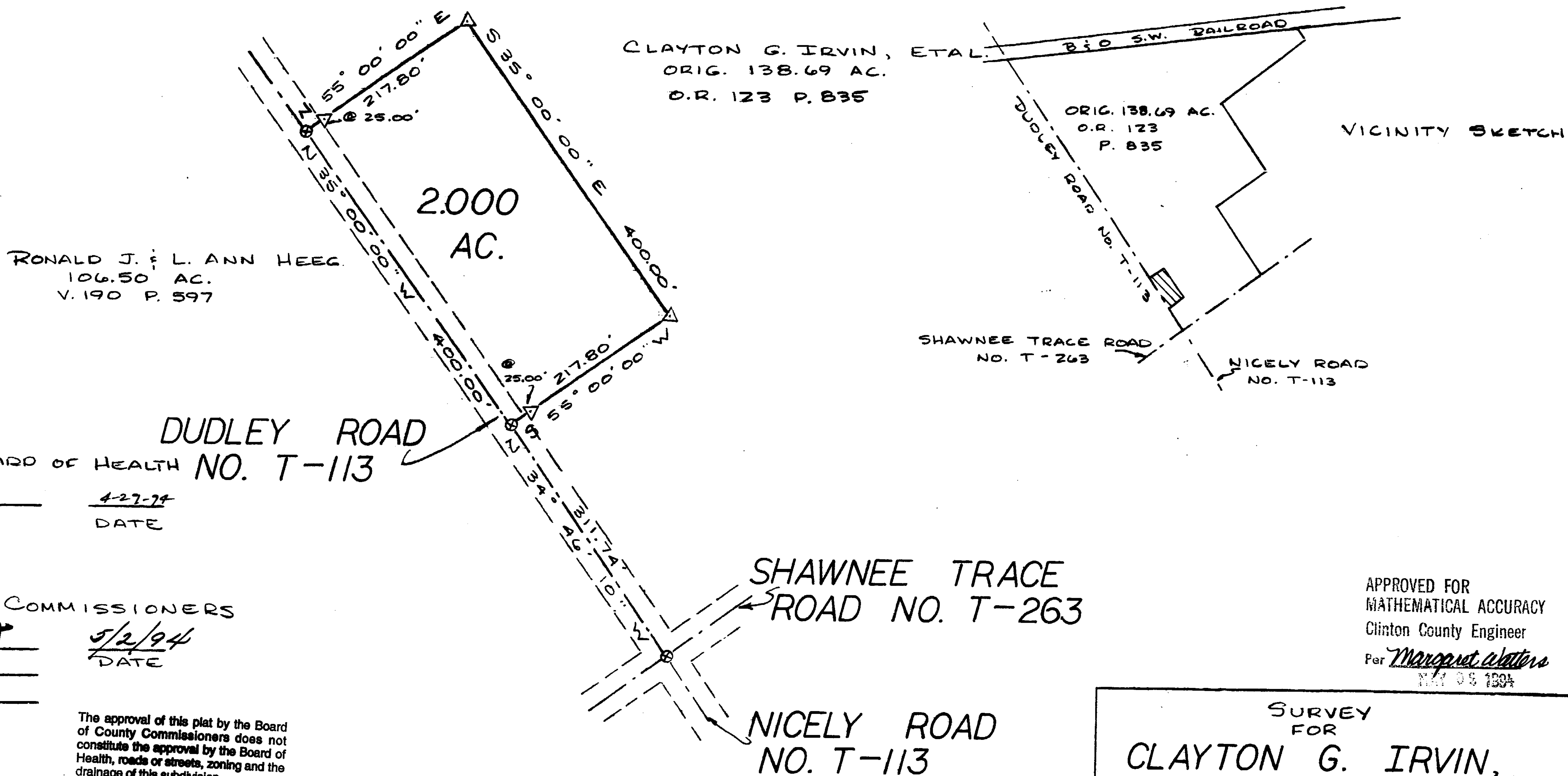
BEARINGS ARE MAGNETIC
AND BASED UPON THE
N 35° 00' 00" W LINE.

SOURCES OF DOCUMENTS
ARE DEED RECORDS AS
SHOWN ON PLAT.

VOLUME 25 PLAT No. 25
CLINTON COUNTY ENGINEER'S
RECORD OF LAND DIVISION
DATE: 5-02-1994
SCALE: 1" = 100'
TOWNSHIP MARION
MILITARY SURVEY No. 2705

LEGEND

- ⊙ 1/4" SPIKE SET
- ▽ 5/8" IRON PIN SET
(ALL IN GOOD CONDITION)



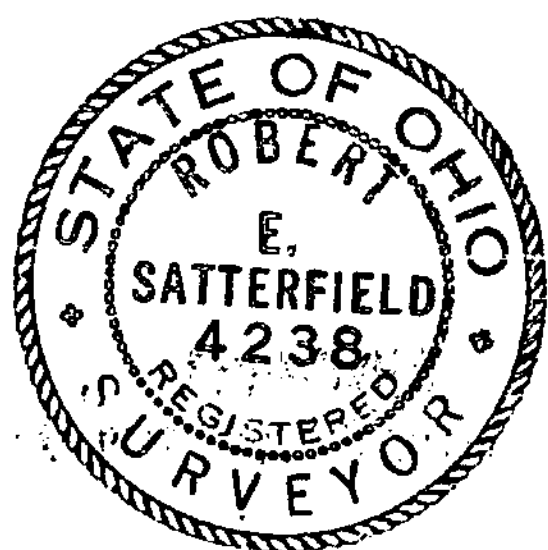
APPROVAL
CLINTON COUNTY BOARD OF HEALTH NO. T-113
By White R.S. 4-27-94
DIRECTOR DATE

CLINTON COUNTY COMMISSIONERS
David R. Stewart 5/2/94
John W. Watson DATE
COMMISSIONERS

The approval of this plat by the Board of County Commissioners does not constitute the approval by the Board of Health, roads or streets, zoning and the drainage of this subdivision.

SURVEY BY
SATTEFIELD & ASSOCIATES

Robert E. Satterfield
ROBERT E. SATTEFIELD
WEST UNION, OHIO
P.S. No. 4238
PHONE: 513-544-2833



APPROVED
CLINTON COUNTY ZONING DEPT.
PER Sheward K. Shumaker
DATE 5-2-94 ZONED H-2

APPROVED FOR
MATHEMATICAL ACCURACY
Clinton County Engineer
Per Margaret Walters
MAY 06 1994

SURVEY FOR
CLAYTON G. IRVIN,
SHANNON MARIE BOWMAN,
& LEIGH ANNE BENNETT
MILITARY SURVEY No. 2705
MARION TOWNSHIP
CLINTON COUNTY, OHIO
SCALE 1" = 100' APRIL 14, 1994