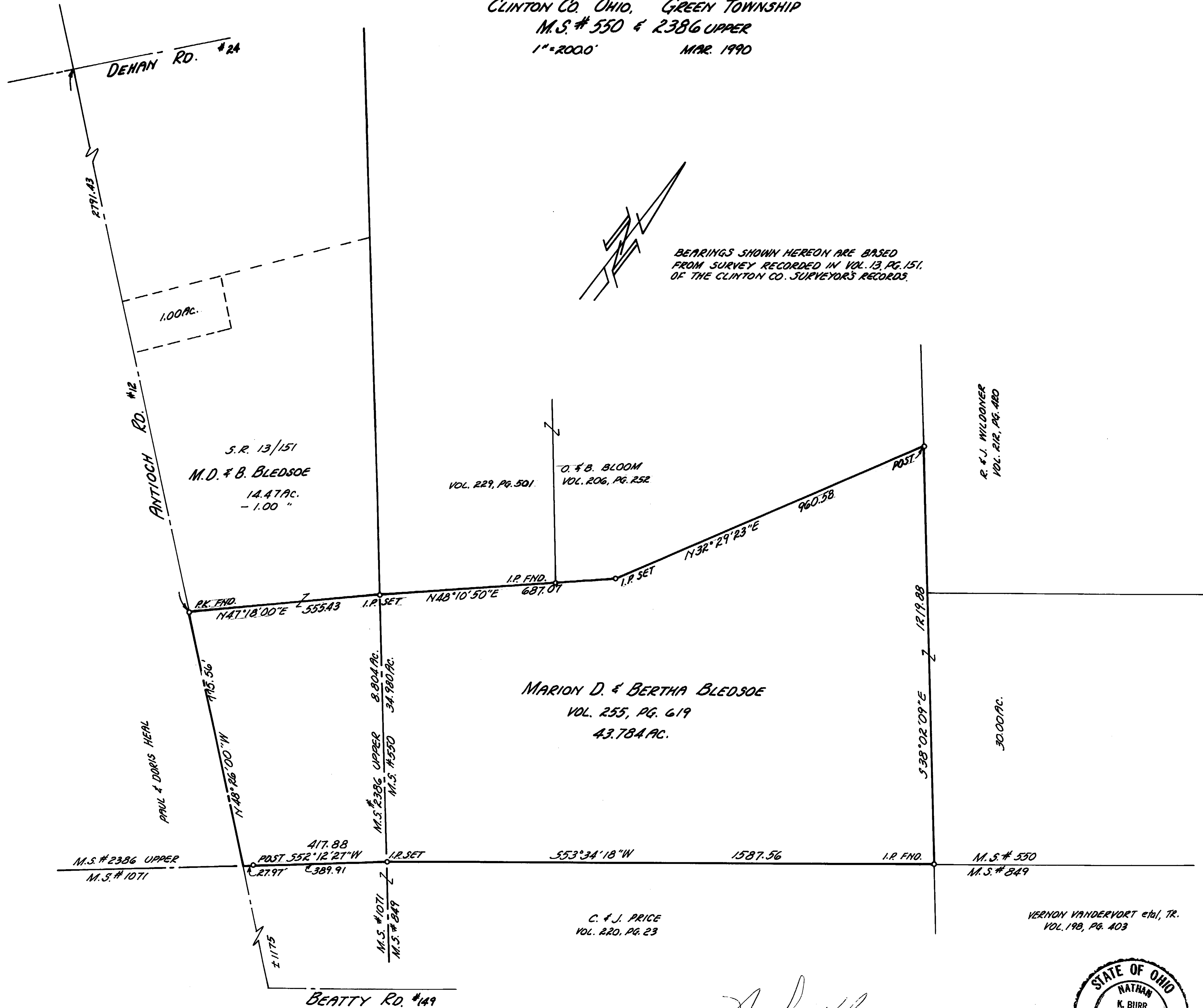


PLAT OF 43.784 AC.  
 CLINTON CO. OHIO, GREEN TOWNSHIP  
 M.S. # 550 & 2386 UPPER  
 1" = 2000' MAR. 1990



APPROVED FOR  
 MATHEMATICAL ACCURACY  
 Clinton County Engineer  
*Vernon Vandervort et al, TR.*  
 Vol. 198, Pg. 403  
 MAR 15 1990

*Nathan K. Burr*  
 NATHAN K. BURR, REG. SURVEYOR #4942

