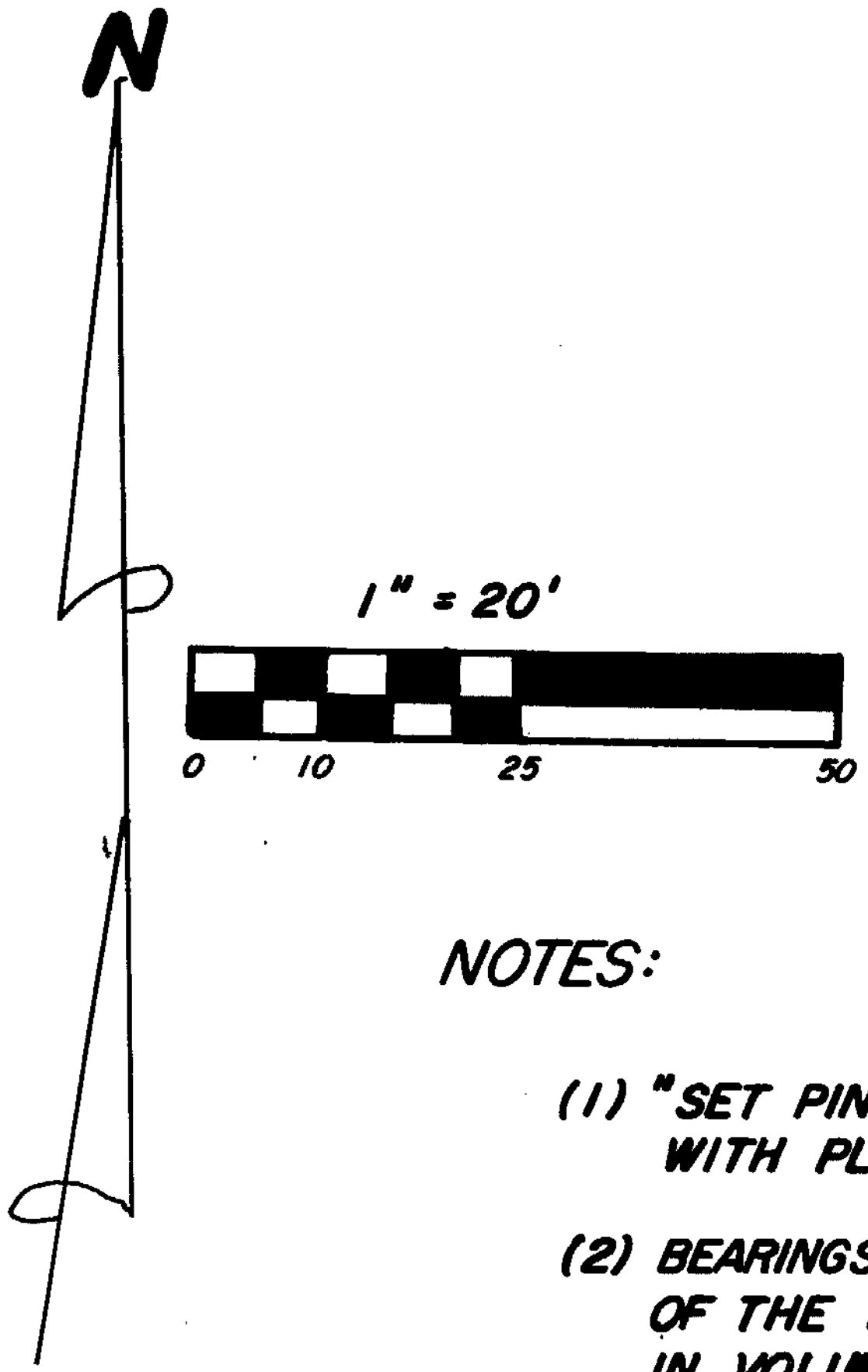


CLINTON COUNTY ENGINEERS  
 RECORD OF LAND DIVISION  
 VOLUME 21 PLAT NO. 4  
 DATE 12-26-89  
 SCALE 1" = 20'

DEED REFERENCE  
 VOLUME 250 PAGE 271  
 TOWNSHIP UNION-CITY OF WILMINGTON  
 MILITARY SURVEY NO. 1057

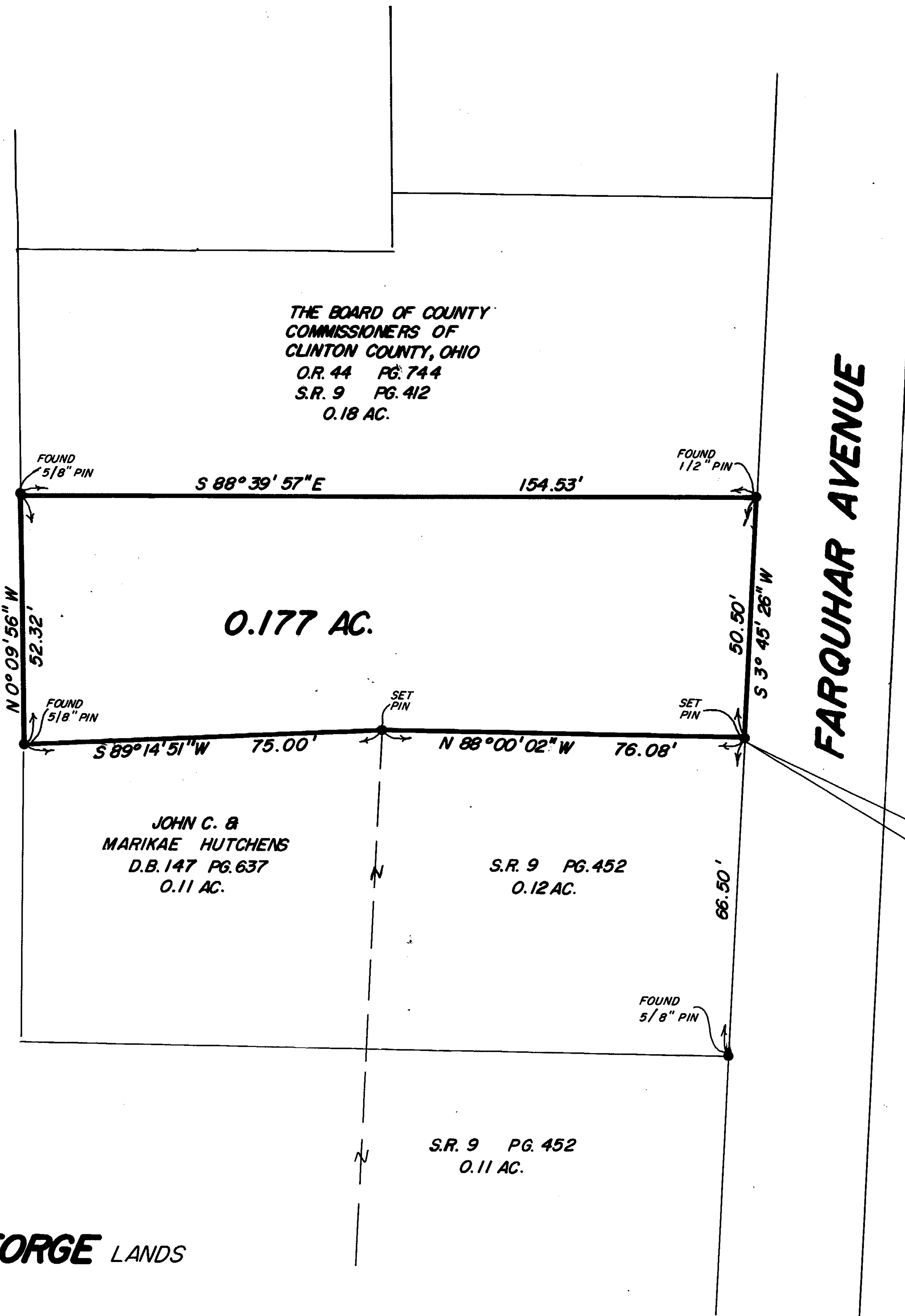


NOTES:

- (1) "SET PIN" DENOTES 1/2" X 30" IRON PIN WITH PLASTIC CAP
- (2) BEARINGS WERE DERIVED FROM THE SURVEY OF THE 1.070 ACRE TRACT AS RECORDED IN VOLUME 20, PLAT NO. 297, OF THE CLINTON COUNTY ENGINEERS RECORD OF LAND DIVISION.

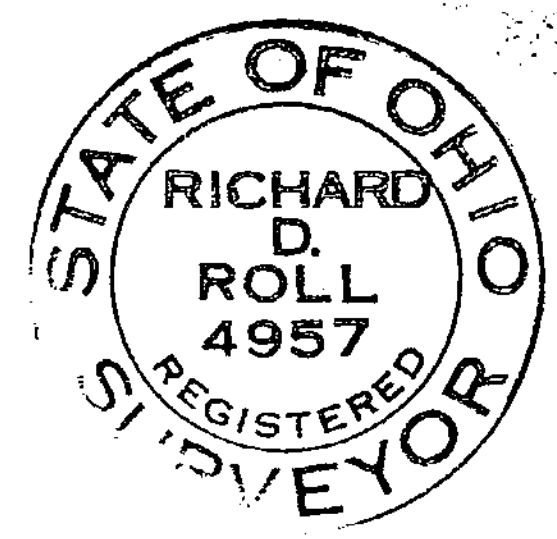
THE BOARD OF COUNTY COMMISSIONERS OF CLINTON COUNTY, OHIO  
 O.R. 9 PG. 700  
 S.R. 20 PL. 297  
 1.070 AC.

THE BOARD OF COUNTY COMMISSIONERS OF CLINTON COUNTY, OHIO  
 O.R. 44 PG. 744  
 S.R. 9 PG. 412  
 0.18 AC.



I HEREBY CERTIFY THIS TO BE A CORRECT PLAT OF A SURVEY MADE UNDER MY DIRECTION IN DECEMBER, 1989

*Richard D. Roll*  
 REGISTERED SURVEYOR NO. 4957



SURVEY PLAT OF  
**GRACE O'ROURKE GEORGE** LANDS  
 SITUATED IN  
 MILITARY SURVEY NO. 1057  
 CITY OF WILMINGTON  
 UNION TOWNSHIP  
 CLINTON COUNTY, OHIO

S.R. 9 PG. 452  
 0.11 AC.

POINT OF BEGINNING  
 N.E. CORNER OF  
 THE 0.12 AC. TR.

APPROVED FOR  
 MATHEMATICAL ACCURACY  
 Clinton County Engineer  
 Per *Margaret Watkins*  
 DEC 19 1989

**CLINGCO**  
 ENGINEERS & SURVEYORS  
 P.O. BOX 241  
 62 1/2 E. SUGARTREE ST. WILMINGTON, OHIO

SCALE 1" = 20'	DRAWN BY REC	CHECKED BY RDR
DATE 12-15-89	DRWG. C-5738	