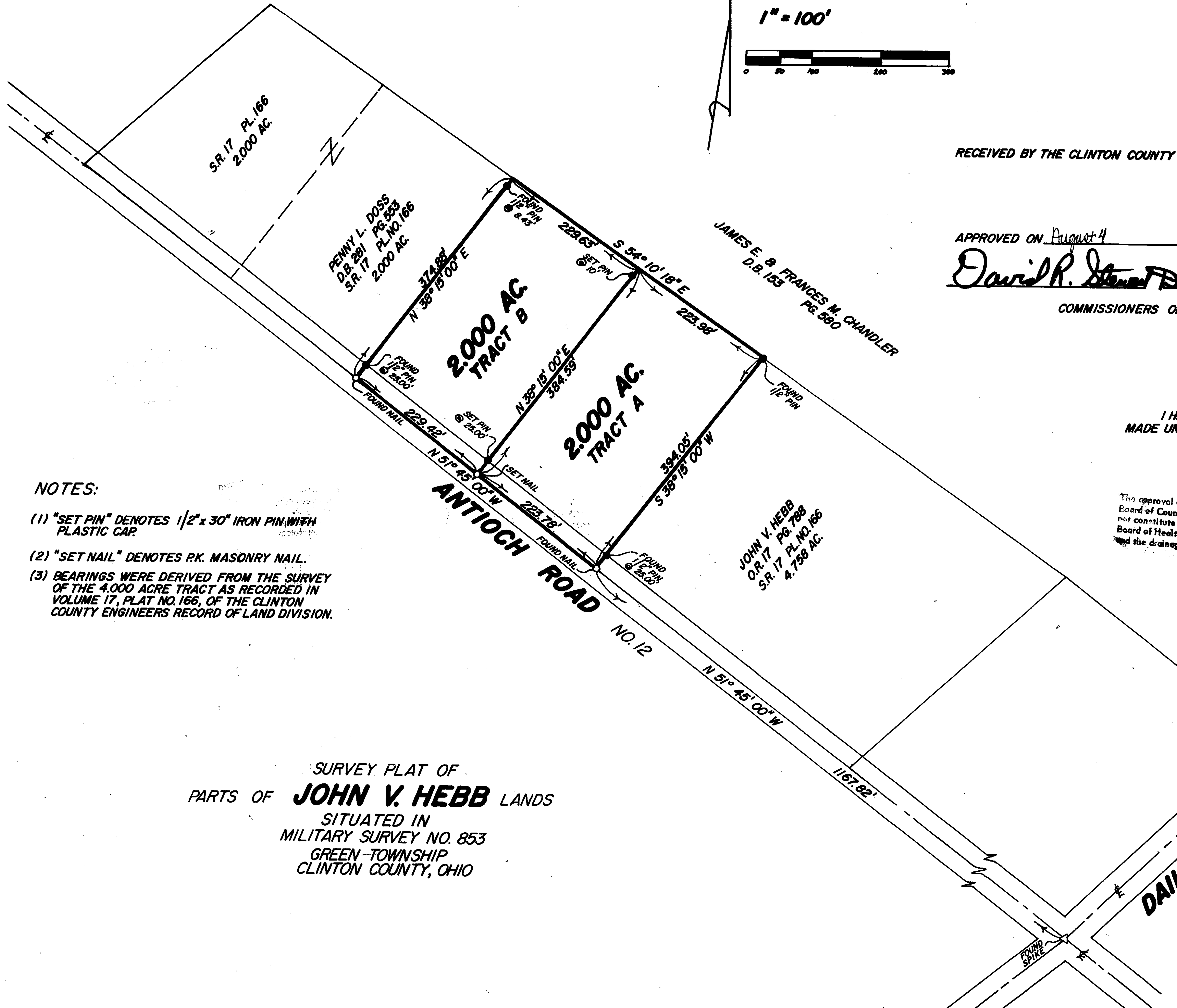
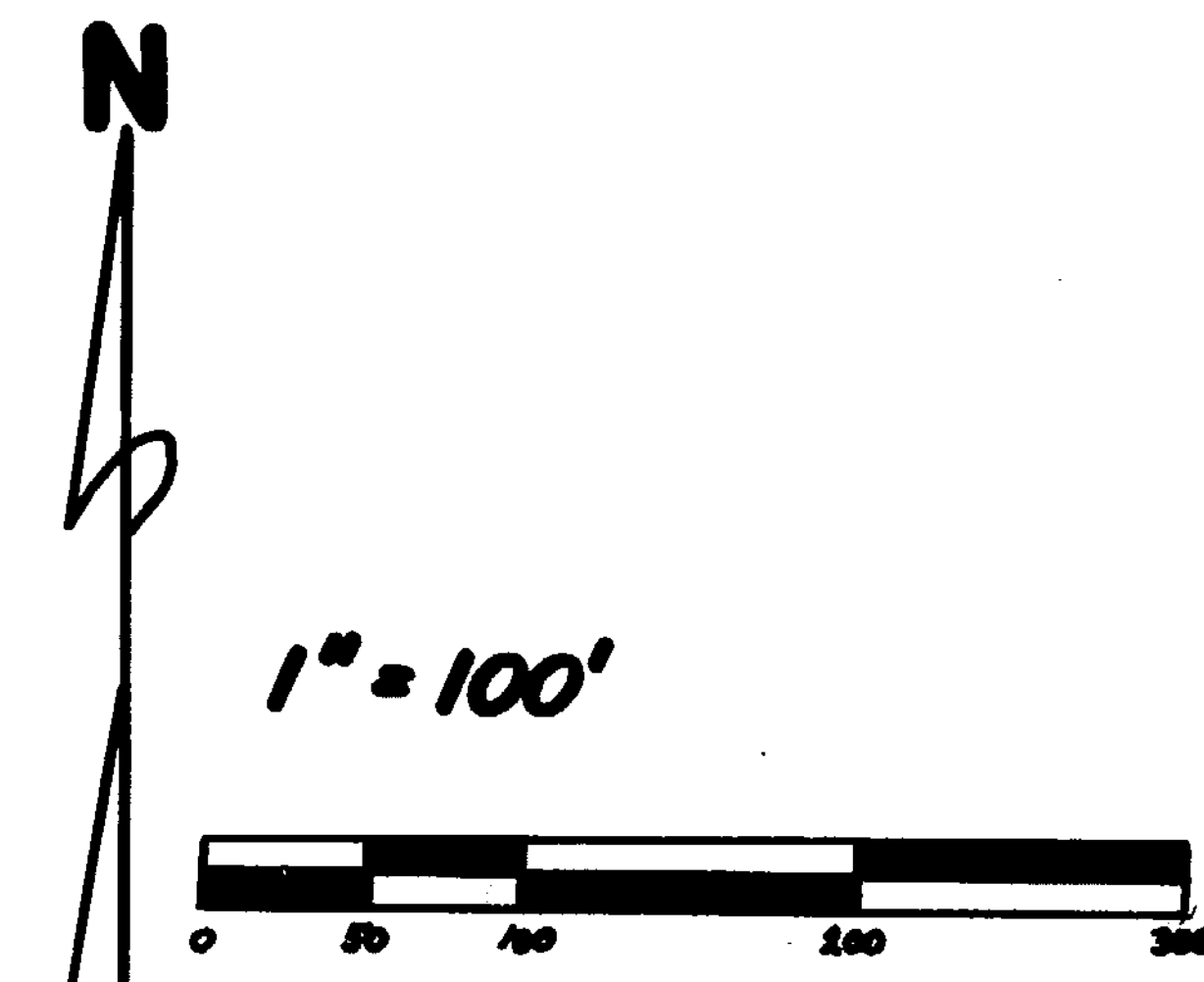


**CLINTON COUNTY ENGINEERS  
RECORD OF LAND DIVISION**

VOLUME 20 PLAT NO. 3  
DATE 8-31-1988  
SCALE 1" = 100'

DEED REFERENCE  
OFFICIAL RECORD  
VOLUME 17 PAGE 788  
TOWNSHIP GREEN  
MILITARY SURVEY NO. 853



RECEIVED BY THE CLINTON COUNTY COMMISSIONERS ON August 4, 1988 1988

Mary McKinley  
CLERK

APPROVED ON August 4 1988

David R. Stewart, David Tammitt Bailey, Thomas L. Gilder  
COMMISSIONERS OF CLINTON COUNTY, OHIO

This land split is conditionally approved for land transfer. Split approval does NOT constitute approval for a building permit and for Health Department regulations.

I HEREBY CERTIFY THIS TO BE A CORRECT PLAT OF A SURVEY MADE UNDER MY DIRECTION IN JULY, 1988.

Richard D. Roll  
REGISTERED SURVEYOR NO. 4957

The approval of this plat by the Board of County Commissioners does not constitute approval by the Board of Health, made or shown, zoning and the drainage of this subdivision.



**NOTES:**

- (1) "SET PIN" DENOTES 1/2" x 30" IRON PIN WITH PLASTIC CAP.
- (2) "SET NAIL" DENOTES P.K. MASONRY NAIL.
- (3) BEARINGS WERE DERIVED FROM THE SURVEY OF THE 4,000 ACRE TRACT AS RECORDED IN VOLUME 17, PLAT NO. 166, OF THE CLINTON COUNTY ENGINEERS RECORD OF LAND DIVISION.

SURVEY PLAT OF  
PARTS OF **JOHN V. HEBB** LANDS  
SITUATED IN  
MILITARY SURVEY NO. 853  
GREEN TOWNSHIP  
CLINTON COUNTY, OHIO

APPROVED FOR  
MATHEMATICAL ACCURACY  
Clinton County Engineer  
Per Margaret Watters

<b>CLINCO</b> ENGINEERS-SURVEYORS P.O. BOX 241		
62 1/2 E. SUGARTREE ST.		WILMINGTON, OHIO
SCALE 1" = 100'	DRAWN BY MSH	CHECKED BY RDR
DATE 7-27-88	DRWG. C-5346	