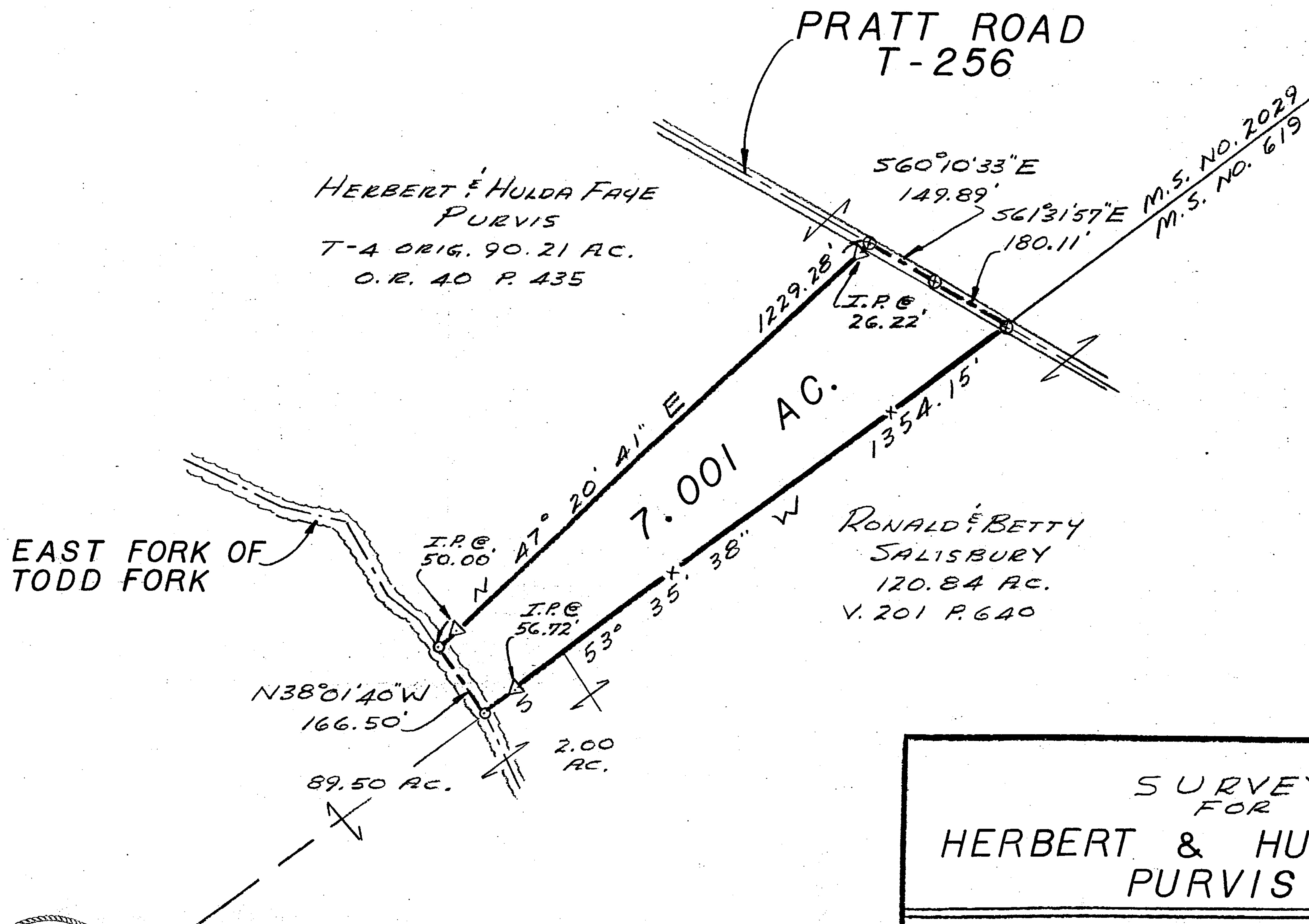
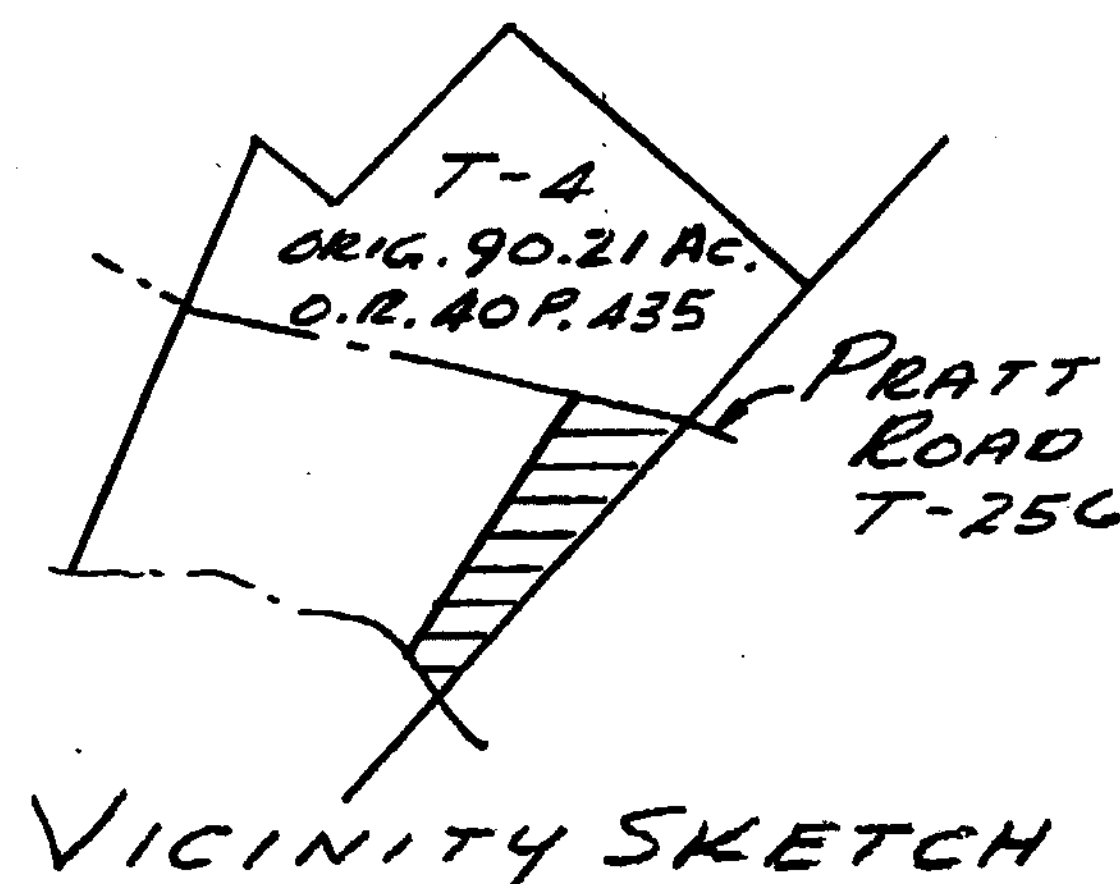


0 200 400  
SCALE: 1"=200'

BEARINGS ARE MAGNETIC  
AND BASED UPON THE  
561°31'57" E LINE.  
SOURCE OF DOCUMENTS  
ARE DEED RECORDS  
AS SHOWN ON PLAT.

VOLUME 20 PLAT NO. 27  
CLINTON COUNTY ENGINEERS  
RECORD OF LAND DIVISION  
DATE: 10-13-88  
SCALE: 1"=200'  
MILITARY SURVEY NO. 2029  
TOWNSHIP - WASHINGTON  
DEED REFERENCE  
O.R. 40 PAGE 435



LEGEND  
⊗ SPIKE SET  
▽ 5/8" IRON PIN SET  
○ POINT IN CREEK  
-x- FENCE

SURVEY BY  
SATTERFIELD & ASSOCIATES  
Robert E. Satterfield  
ROBERT E. SATTERFIELD  
CIVIL ENGINEER & SURVEYOR  
WEST UNION, OHIO  
P. S. NO. 4238  
PHONE: 513-544-2833



APPROVED FOR  
MATHEMATICAL ACCURACY  
Clinton County Engineer  
Melvin J. ...  
OCT 13 1988

SURVEY  
FOR  
HERBERT & HULDA FAYE  
PURVIS  
MILITARY SURVEY NO. 2029  
WASHINGTON TOWNSHIP  
CLINTON COUNTY, OHIO  
SCALE 1"=200' OCTOBER, 1988