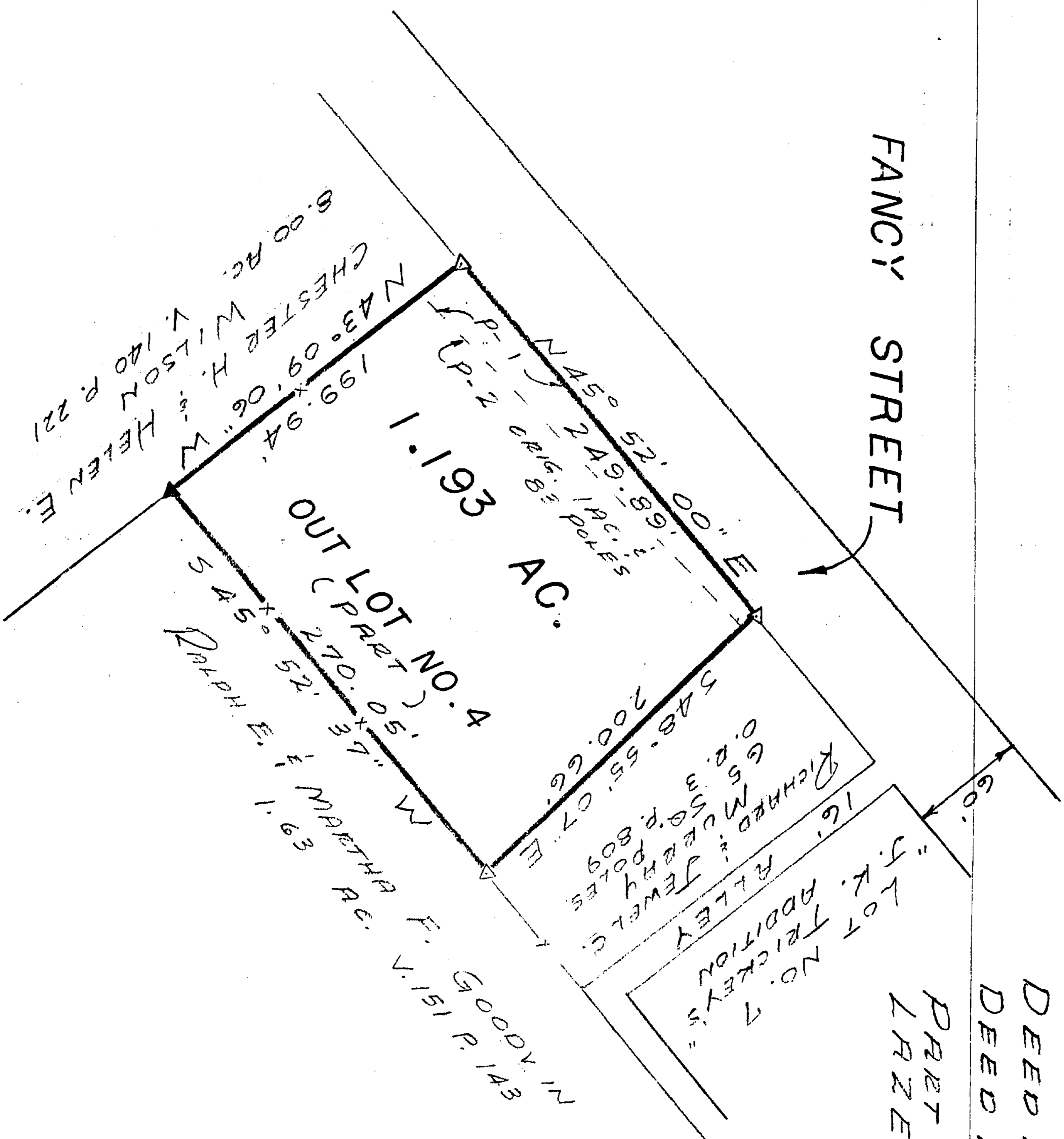


0 60 120  
SCALE: 1"=60'

BEARINGS ARE MAGNETIC  
AND BASED UPON THE  
N 45° 52' 00" E LINE.  
SOURCE OF DOCUMENTS  
RECORDED RECORDS AS  
SHOWN ON PLAT.

VOLUME 20 PLAT NO. 269  
CLINTON COUNTY ENGINEERS  
RECORD OF LAND DIVISION  
DATE: 10-24-1989  
SCALE: 1"=60'  
MILITARY SURVEY NO. 3342  
CORPORATION - BLANCHESTER  
DEED REFERENCE  
DEED BOOK 37 PAGE 25

FANCY STREET



LEGEND  
▼ IRON PIN FOUND  
▽ 3/8" IRON PIN SET  
—X— FENCE  
(ALL IN GOOD CONDITION)

APPROVAL

BLANCHESTER PLANNING COMMISSION

10/19/89  
DIRECTOR



SURVEY BY  
SATTERFIELD ASSOCIATES

Robert E. Satterfield

ROBERT E. SATTERFIELD  
CIVIL ENGINEER & SURVEYOR  
WEST UNION, OHIO  
P. S. NO. 4238  
PHONE: 513-544-2833

APPROVED FOR  
METHEMATICAL ACCURACY  
Clinton County Engineer  
Per Margaret Stephens  
OCT 24 1989

SURVEY  
FOR  
CHESTER H. & HELEN E.  
WILSON

MILITARY SURVEY NO. 3342  
VILLAGE OF BLANCHESTER  
CLINTON COUNTY, OHIO  
SCALE 1"=60' SEPTEMBER, 1989