

MAGNETIC BEARINGS



SCALE: 1" = 200'

BEARINGS ARE MAGNETIC AND BASED UPON THE N50°26'59"W LINE. SOURCE OF DOCUMENTS ARE DEED RECORDS AS SHOWN ON PLAT.

M.S. NO. 2251  
M.S. NO. 4279  
THEODORE & KAREN MILLER  
13.25 AC.  
V. 255 P. 123

S. & T. FRICKE  
27.54 AC.  
O.R. 4 P. 631

7.003 AC.

VINCENT A. WALTER  
116.60 AC.  
V. 250 P. 327

N74°44'33"W  
72.92' CHORD  
R=40' Δ=131°25'37"  
ARC=91.75' T=88.65'  
N50°26'59"W  
54.73'

J. & P. KRETCHER  
5.00 AC.  
O.R. 18  
P. 513

MARY TREOLO  
T-2 ORIG. 110.40 AC.  
O.R. 7 P. 179

N29°37'57"W  
200.00'  
N62°57'E  
60.44'  
60' R/W

N76°23'W  
80.96'  
(CHORD)  
R=60'  
N75°35'W  
82.19'  
(CHORD)  
R=60'

19.60 AC.  
O.R. 7 P. 179

E. & S. ROBERTS

OLD STATE ROAD  
(NO. 112)

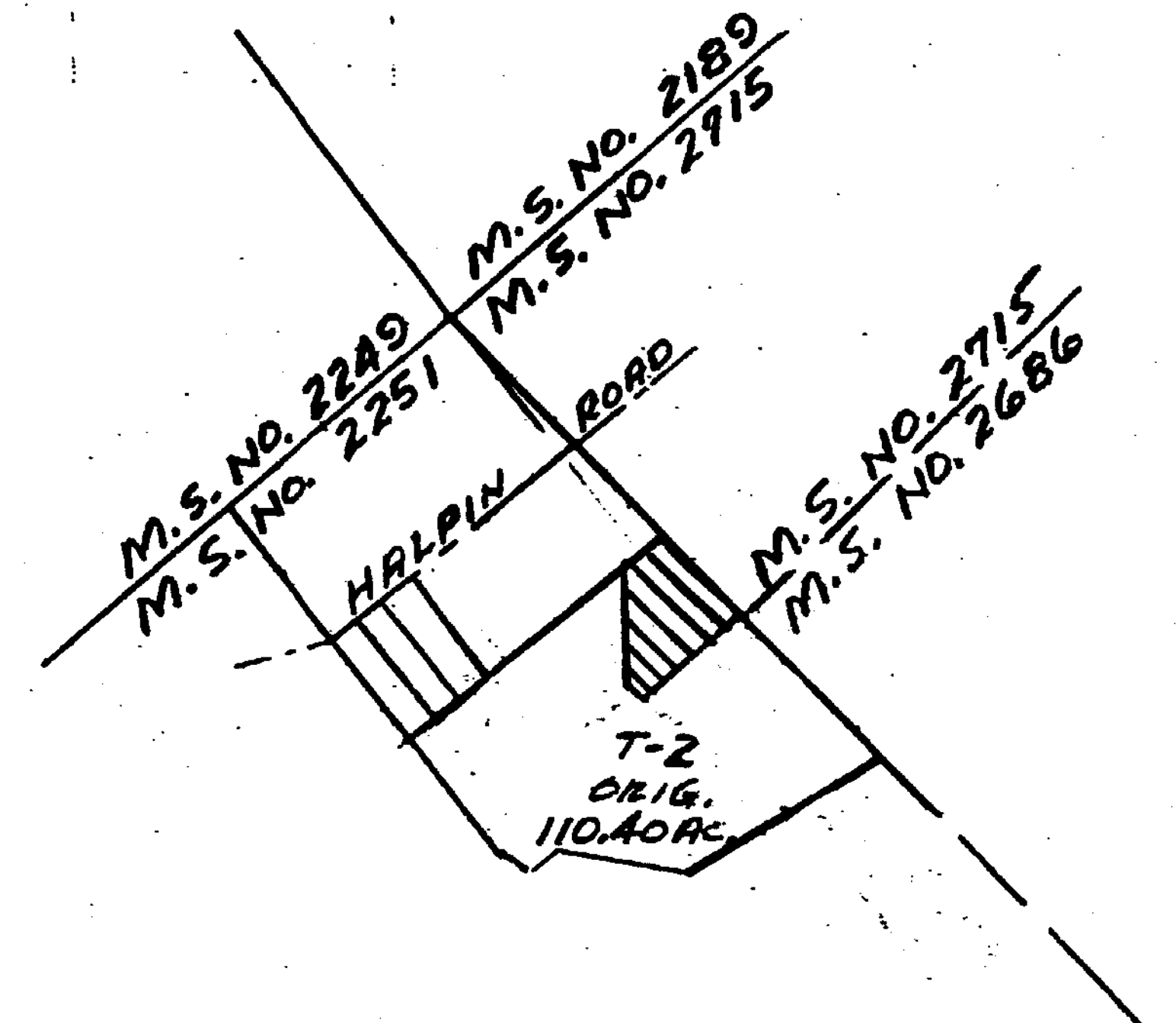
STATE ROUTE NO. 730

558°42'W  
60.01'

VOLUME 20 PLAT No. 25  
CLINTON COUNTY ENGINEERS  
RECORD OF LAND DIVISION  
DATE: 10-13-88  
SCALE: 1" = 200'  
TOWNSHIP VERNON  
MILITARY SURVEY NO. 2251

DEED REFERENCE

O.R. 7 PAGE 179



VICINITY SKETCH

LEGEND

- ▼ IRON PIN FOUND
- ▽ 5/8" IRON PIN SET.
- SPIKE FOUND (ALL IN GOOD CONDITION)



SURVEY BY  
*Robert E. Satterfield*  
ROBERT E. SATTERFIELD  
CIVIL ENGINEER & SURVEYOR  
WEST UNION, OHIO  
P.S. NO. 4238

SURVEY FOR  
MARY TREOLO  
MILITARY SURVEY NOS. 2251 & 4279  
VERNON TOWNSHIP  
CLINTON COUNTY, OHIO  
SCALE 1" = 200'  
OCTOBER, 1988

APPROVED FOR AUTHENTICITY AND ACCURACY  
Clinton County Engineer  
Per *Melodie Niederkorn*

OCT 12 1988